

## CONTENTS

Camper mechanisms.....	124
Cupboard catches.....	114
Curtain accessories.....	123
External fixings.....	122
Gas struts.....	117
Handles.....	116
Hinges.....	113
Internal fixings.....	119
Mattresses.....	108
Storage.....	118
Table parts.....	108
Table legs.....	109



# HARDWARE AND FURNITURE

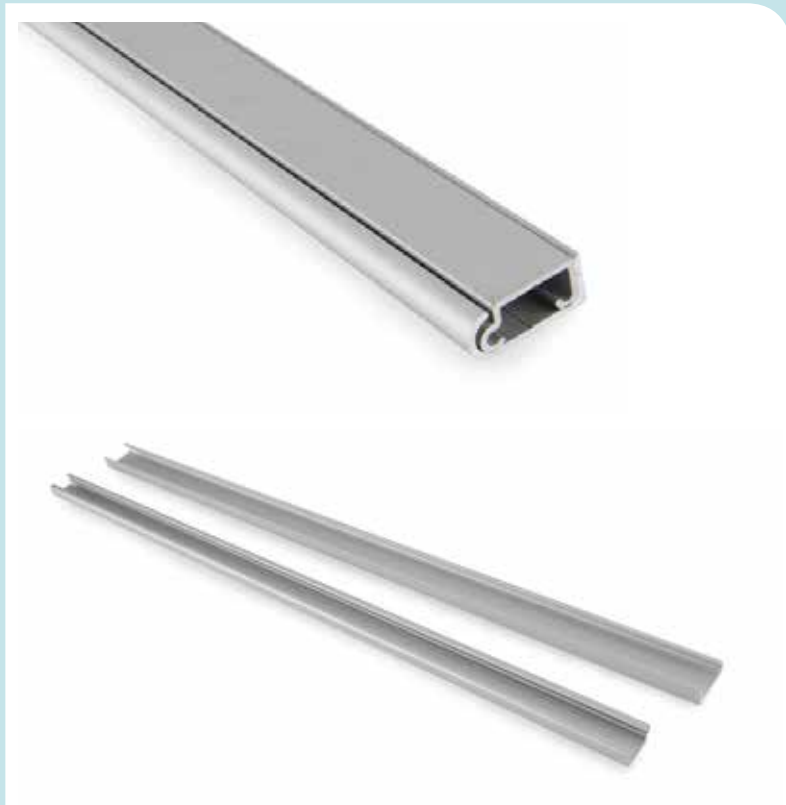


### MATTRESS INNERSPRING

There is nothing like a good night's sleep, especially after a hard day's travel. The latest range of Camec mattresses are designed with comfort and support in mind. Made from high quality, durable non-woven Damask fabric, they feature Bonnell hard coil springs, a 2cm high density foam top layer, 400g white cotton felt and come in a range of sizes that will suit nearly all caravans, pop tops and campers.

STANDARD 1880 X 1220 X 210	042833
BACK SUPPORT 72 X 48" SQ CRN INNER SPRING 9 1/2" HIGH	007718
CAMPER TRAILER 1500 X 1900 X 100	042838
CUT CORNER 1370 X 1830 X 210	042832
CUT CORNER 1880 X 1220 X 210	042834
CUT CORNER WITH BOLSTER 1370 X 1830 X 210 X 100	042836
CUT CORNER WITH BOLSTER 1500 X 1830 X 210 X 100	042837
SINGLE INNERSPRING 1830 X 760 X 210	042835

### Table parts



### ALUMINIUM TABLE HINGE

Male section mounts onto table and the female section attaches to the wall.  
Length: 495mm.

ALUMINIUM TABLE HINGE MALE AND FEMALE SECTION	035210
ALUMINIUM TABLE HINGE 4M CLEAR ANODISED FEMALE	034299
ALUMINIUM TABLE HINGE 4M CLEAR ANODISED MALE	034298



### FOLDING BRACKET

305mm spring loaded.  
• White

008006



### PLASTIC HINGE - TABLE SUPPORT LEG

Replacement plastic hinge for table support legs (refer codes 007873, 007874 and 007875).

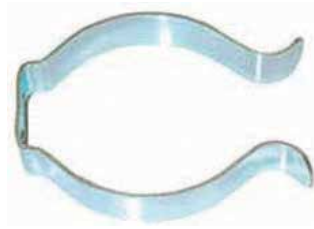
007908



**PLASTIC BRACKET TO SUIT TABLE SLIDE**

Replacement bracket for table slide kit (refer code 007960).

007961



**BREHA CLIP - ISLAND LEG POLE**

For storage of island table leg poles when table is not in use.

007912



**TABLE SLIDE RAIL KIT**

Suits bi-fold and folding table legs. Kit includes: 2 x plugs, 2 x brackets, 2 x 950mm alloy rails.

007960

Table legs



**FIAMMA TUBE PRO TABLE LEG**

Chrome tube for the Tube Pro 70 table leg. Made from anodised aluminium.

**FEATURES:**

- The Tube Pro table leg comprises of 3 parts - tube (code 040271), flush top (code 007914), recessed base (code 007913) and optional tripod used to convert table for outdoor use (code 040199). Each item is sold individually
- Can easily be dismantled and stored
- Height: 700mm

RECESS BASE PLATE	007913
DOME TOP PLATE	007914
FOLDING TRIPOD BASE	040199
TUBE PRO TABLE LEG	040271



**CAMEC WINEGLASS TABLE LEG**

Features a round reinforced base plate that provides maximum support for the tubular leg. Fitted with an angle iron top plate that makes the whole table very firm.

**FEATURES:**

- The base plate can be anchored to the floor for travelling

CHROME	038576
SILVER	039970
BEIGE	038034



**BASE PEDESTAL LEG LARGE SPLIT**

Replacement table leg base for pedestal table angle iron top (refer code 007880).

- Chrome

007925



**TOP CROSS PEDESTAL TABLE LEG (SPLIT LONG LEG)**

To suit Breha pedestal table legs (long leg).

**SPECIFICATIONS:**

- Dimensions (Overall height): 855mm
- Dimensions: (Closed height): 480mm
- Dimensions: 660mm x 390mm

007922



**TOP PLATE FOR PEDESTAL TABLE LEG SPLIT**

Replacement top plate for pedestal table leg split (refer code 007881).

007921



#### BREHA ISLAND TUBE TABLE LEG SET

Tapered recessed base provides a firm fit and steady support for chrome tube.

##### SPECIFICATIONS:

- Table Leg Height: 655mm
- Base/Plate: 200mm diameter

007876



#### TUBE TUBULAR ISLAND LEG

Replacement table leg for Island tube table set (refer code 007876).

##### FEATURES:

- Optional tripod for outdoor use

##### SPECIFICATIONS:

- Dimensions: 695mm(l) x 42mm(diam)
- Chrome

007910



#### TOP PLATE - TUBULAR ISLAND LEG

Replacement top plate for Island tube table set (refer code 007876).

007909



#### RECESSED BASE PLATE - ISLAND LEG

Replacement recessed base plate for Island tube table set (refer code 007876).

007911



#### WINEGLASS TABLE LEG ANGLE IRON TOP

A wineglass shaped leg with an angle iron split.

##### SPECIFICATIONS:

- Table Leg Height: 730mm
- Base: 420mm(diam)

007884



#### EASY-LIFT TABLE LEG AND ADJUSTABLE PLATE

This telescopic table leg has an adjustable height floor plate to allow for correct height setting when table is being used as a bed base. Lock knob tightens a friction shim to prevent accidental movement.

##### SPECIFICATIONS:

- Overall Height: 855mm
- Closed Height: 480mm

007890

#### SWING AWAY TABLE LEG 4 PIECE

Swings away where space is very restricted. Designed to swing table out of the way when not being used to provide more space in van.

##### FEATURES:

- Includes leg, top plate and bottom plug to secure to floor
- Collar attaches to the side of seat to give added support to leg
- 2 legs required for longer tables

##### SPECIFICATIONS:

- Underside of Table to Floor: 750mm
- Offset: 210mm
- Tube Dimension: 38mm
- Weight: 2.79kg

007892



#### TOP PLATE SWING AWAY TABLE LEG

Designed to swing table out of the way when not being used to give more space.

##### FEATURES:

- Swing away table leg, comes complete with base, middle bracket and top plate
- Sturdy construction with a black finish

##### SPECIFICATIONS:

- Top Plate Dimensions: 200mm x 200mm (with 4 mounting holes)
- Dimensions For Tube: 730mm(h) x 31mm (diameter)
- Offset: 210mm

007895



## Table legs



### WINEGLASS TABLE LEG TUBE ONLY

Replacement tube for wineglass table leg (refer code 039970).

#### SPECIFICATIONS:

- Dimensions: 590mm(l) x 45mm(diam)

007934



### SPLIT BASE - WINEGLASS TABLE LEG LESS WING NUT

Replacement base for wineglass table leg (refer code 039970). Wing nut not included.

007936



### WING NUT - WINEGLASS TABLE LEG

Replacement wing nut for wineglass table leg (refer code 039970).

007937



### SWING AWAY COLLAR FOR TABLE LEG

Replacement swing away collar for table leg (refer code 007892).

007897

## WINEGLASS LEG BENT TUBE ONLY

#### FEATURES:

- Centre bent tube section removes to fold table down, and allows the table to rotate in an offset method to give greater clearance
- The top is removable with a finger knob and does not include a table top

#### SPECIFICATIONS:

- Table Leg Height: 700mm
- Base: 430mm (diameter)
- Top Plate: 300mm x 170mm
- Pipe: 38mm outside diameter
- Pipe Offset: 200mm
- Grey

035213



### TABLE LEG - VTYPE

These simple "V" shaped, chromed wire legs which lock for vertical support, can pivot horizontally under the table top for ease of storage or when the table top is being used as a bed.

#### SPECIFICATIONS:

- Dimensions: 80mm(l) x 710mm(h) x 20mm(d)

007904



### BI-FOLD TABLE LEG

This unique table top hinge set offers versatility and portability. It can also serve as a bed base.

#### FEATURES:

- Unique European style aluminium leg
- Adjusts to both table and bed height
- Table top can be lifted from the wall bracket and positioned elsewhere on the caravan, even outside

#### SPECIFICATIONS:

- Height: 675mm
- Bi-Fold Height: 315mm

007905



### FOLDING TABLE LEG - 675MM

This unique table top hinge set offers versatility and portability. The table top can be lifted from the wall bracket and conveniently positioned elsewhere on the caravan, even outdoors.

007906

## Table legs

**TABLE SUPPORT LEG**

Hinged support leg for table tops when converting to bed base.

305MM

007873

355MM

007874

457MM

007875

**WINEGLASS TABLE SWIVEL ADAPTOR**

Replacement bracket in two sizes, fits most existing table tubes that are around 45mm in diameter.

**FEATURES:**

- These allow an existing table to swing out of the way, by offsetting the table top from the centre pole
- The short and long differ in the distance of the offset

SHORT 205 X 80 X 100 BLACK

038519

LONG 260 X 80 X 100 GREY

038520

**LOCKING KNOB - EASY LIFT LEG**

Replacement locking knob with a 3/8" Whitworth thread to suit Eazy lift table leg (refer code 007890).

**SPECIFICATIONS:**

- 3/8" Whitworth thread
- Black

007940

**TABLE LEG TOP FLUSH**

Replacement top flush plate base to suit tube 55mm in diameter.

035547

**TABLE LEG BASE RECESSED**

Replacement recessed base to suit tube 55mm in diameter.

035548

**PEDESTAL TABLE LEG ANGLE IRON TOP**

The 4 way chrome base is bolted to the floor with the supplied eye bolt. The table can be easily removed to use outside or as a bed base. The chrome tube and angle iron top can be removed by undoing the wing nuts top and bottom.

**FEATURES:**

- Can be anchored to the floor for travel but can also be moved for use elsewhere
- Freestanding
- Sturdy table legs with an angle iron top plate for extra support
- Includes 2 long and 2 short legs on base

**SPECIFICATIONS:**

- Table Leg Height: 690mm
- Long Base: 615mm x 830mm

007880

**PEDESTAL TABLE LEG WITH TOP PLATE**

Pedestal table leg with plate top. Ideal for smaller table tops with the same portability as all pedestal legs.

**SPECIFICATIONS:**

- Table Leg Height: 640mm
- Base: 610mm (diam)

007881



### UTILITY STRAIGHT HINGE

#### SPECIFICATIONS:

- Dimensions: 305mm(l) x 5mm(h) x 30mm(d)

035360



### PIANO HINGE

Continuous lightweight hinge. Sold in 2m lengths.

- Brass

008040



### BUTT HINGE ZINC PLATED

Zinc plated.

50MM

70MM

008054

008055



### BUTTERFLY HINGE

BRASS

NICKEL

008036

008034



### CUPBOARD HINGE

Popular semi concealed flat leaf cupboard hinge in a choice of two finishes.

T1500F FLAT BRONZE

T1500F FLAT BRASS

T1600F FLAT BRONZE

T1600F FLAT BRASS

008024

008025

008026

008027



### CUPBOARD HINGE BENT

Florentine bronze.

#### FEATURES:

- Larger concealed flat flange for fixing to wide cupboard door trim frames
- The offset hinge designed for use with DES cupboard door moulding
- Bronze

008028



### CUPBOARD HINGE WELD ON FLAT (601)

A semi concealed flat leaf cupboard hinge. Fits flush on the outside of the frame and flush on the inside of the door.

#### SPECIFICATIONS:

- Zinc finish
- Hole centres on long side: 52mm
- Hole centres on short side: 26mm

601 FLAT SILVER

OFFSET SILVER

008031

008033



### BUTT HINGE PLASTIC

#### FEATURES:

- Nylon
- Heavy duty
- Durable

#### SPECIFICATIONS:

- 51mm

008019



### BENCH SEAT HINGE

#### FEATURES:

- Spring operated hinge designed to retain seat tops (up to 12kg) in the raised position at an angle
- Available only in pairs (left and right)

008043



### MINI DOOR OFFSET HINGE No 18

Semi concealed lightweight, non-rusting, aluminium hinge for mini access doors.

- Chrome

015651



### CAMEC CUPBOARD CATCHES

A rosette (outer ring) push button knob and back catch are required to make up a complete cupboard catch. An angle striker may be used if required. Each item is sold separately.

**FEATURES:**

- Back catch is attached to the back surface of door
  - Rosette and push button knob come in different sizes and various colours to suit door thicknesses of 16mm - 19mm
- SPECIFICATIONS:**
- Plastic construction
  - Suit door thickness of 16-19mm (depends on rosette)
  - Hole Dimensions: 19.5mm diameter
  - Centre of door hole: 16mm from door edge

**ROSETTES**

MINI	NICKEL PLATED	008141
16MM	POLISHED BRASS	008147
16MM	NICKEL PLATED	008150
16MM	WHITE	008151
19MM	WHITE	008157
19MM	NICKEL PLATED	008156
19MM	BROWN	008154

**PUSH BUTTON KNOB**

MINI	NICKEL PLATED	008137
16-19MM	POLISHED BRASS	008130
16-19MM	NICKEL PLATED	008133
16-19MM	WHITE	008134

**BACK CATCH**

MINI	BROWN	008143
MINI	NICKEL PLATED	008144
MINI PUSH LOCK	WHITE	008145
LARGE	WHITE	008097

**ANGLE STRIKERS - OPTIONAL**

PUSH BUTTON CATCH	008103
PUSH LOCK DOOR CATCH	008119



**CUPBOARD CATCH**

A strong plastic spring-loaded catch used in many early model caravans. Pack of 2.

- Brown

008081



**CAMEC NICKEL CATCH SET**

Camec 13mm nickel catch set includes catch, rosette, knob and striker plate.

13MM	008089
19MM	008091



**CUPBOARD CATCH LONG STEM**

The 1269B long stem cupboard catch is a pull catch that suits a cupboard door with a 20mm thickness. It accepts various knobs and includes striker plate.

008080





**CUPBOARD CATCH**

A strong plastic spring-loaded catch used in many early Franklin caravans (2 part).

**SPECIFICATIONS:**

- Ideal for doors that are 10mm thick
- Measures 73mm from rear single screw hole to each front screw hole
- Brown

008078



**CUPBOARD CATCH**

2 piece short stem catch to suit 10mm door thickness. Accepts various knobs.

008079



**ROLLER CATCH-CUPBOARD**

A positive action roller catch.

008059



**CUPBOARD CATCH H025**

A very popular push button cupboard catch. Can be used with any handle.

- GOLD
- CHROME

008072

008073



**CUPBOARD VERTICAL CATCH NYLON**

Gripper catch, vertical. Used to keep cupboard doors or draws closed. This version is usually placed on a vertical side.

**FEATURES:**

- Strong and positive nylon gripper catch for cupboard doors and drawers
- Vertical striker
- Base Width: 13mm x 32mm

008061



**CUPBOARD HORIZONTAL CATCH NYLON**

Gripper catch, horizontal. Two pieces that make up the horizontal gripper catch. Used to keep cupboard doors or draws closed.

**FEATURES:**

- Strong and positive nylon gripper catch for cupboard doors and drawers
- Horizontal striker
- Base Width: 13mm x 32mm

008062



**BAGGAGE PLASTIC DOOR CATCH**

Keeps baggage compartment open. Catch mounts on vehicle and allows easy, trouble free access.

- White

008067



**SCREW GRIPPER CATCH**

008060



**MINI CUPBOARD CATCH STRIKER**

008095



**ELBOW/KANGAROO CATCH**

**FEATURES:**

- Spring loaded securing catch
- Zinc plated steel

008087



**LOCKWOOD 200 STREAM LATCH**

Main door lock ideal for narrow door stiles.

- Chrome

008235



**COMPRESS LATCH SMALL FLUSH FITTING**

For use on Service Doors.

- Chrome

008238

Handles



**GRAB HANDLE VECAM**

A strong plastic grab handle suitable as a pull handle on the corner of caravans or camper trailers. Gasket not included. Please use silicone under the handle and also on the threads of your screws.

**SPECIFICATIONS:**

- Overall Length: 158mm
- 23mm between hole centres horizontally
- 136mm between hole centres vertically

GREY 007980  
 WHITE 007983



**GRAB HANDLE GASKET VECAM**

Replacement gasket for grab handle (refer code 007980).

GREY 007981  
 WHITE 007984



**GRAB HANDLE PLASTIC**

A strong plastic grab handle suitable as a pull handle on the corner of caravans or camper trailers. Gasket not included. Please use silicone under the handle and also on the threads of your screws.

**SPECIFICATIONS:**

- Overall Length: 158mm
- 23mm between hole centres horizontally
- 136mm between hole centres vertically
- White

007988



**GRAB HANDLE**

100MM CHROME 007977  
 152MM CHROME 007979



**CUPBOARD STAY UP G-STRUT TYPE**

A strong spring loaded stay ideally suited for supporting top hinged cupboard doors.

008008



**EMRO HANDLE**

A strong chrome plated handle suitable as a pull handle on the corner of caravan.

**SPECIFICATIONS:**

- Length: 130mm
- Chrome

036752



**FIRMOTOP STAY CUPBOARD STAY UP**

**FEATURES:**

- Chrome finish cupboard stay up
- Spring pressure supports the flap when raised and holds it firmly against the cabinet when closed

**SPECIFICATIONS:**

- Opens to 130mm overall
- Chrome

008009



**WINDOW STAY 802**

This folding stay is available in two sizes and was often used as a window stay in older caravans.

SMALL 008014

LARGE 008013





**GAS STRUT WITH BALL STUDS**

These are used to assist the lifting of the roof of many pop-tops. Please note: Ensure the extended length is suitable and that the ends are similar.

100N - 525MM	008406
125N - 195.5MM	040273
150N - 317MM	015645
150N - 450MM	035305
150N - 525MM	008407
200N - 525MM	008408
230N - 525MM	008424
240N - 825MM	008397
250N - 430MM	035302
250N - 525MM	008409
290N - 825MM	008398
300N - 525MM	008410
330N - 525MM COROMAL	008425
330N - 825MM	008395
350N - 525MM	008411
400N - 816MM	008426
400N - 525MM	008412
435N - 525MM	008396
500N - 525MM	008413
600N - 525MM	008414
600N - 525MM	035297



**GAS STRUT ONLY**

These gas struts are used to assist the lifting of the roof of many pop-tops. Please note: Ensure the extended length is suitable and that the ends are similar.

**FEATURES:**

- Suitable for Jayco vans

**SPECIFICATIONS:**

- Length: 818mm
- Does not include cup and ball
- Weight Capacity: 30kg

300N - 818MM

008393

400N - 818MM

008394



**GAS STRUT BRACKET**

GAS STRUT MOUNTING BRACKET

008381





## ROLLOUT PANTRY AND BASKETS

The pull out frame is made from tubular steel and is epoxy coated. The pantry comes with 2 chrome plated wire baskets that clip onto the frame. Each basket measures 455mm x 110mm x 75mm deep. Can be made to different widths to suit the door opening. The main frame is 570mm x 450mm (20mm) tube steel which slides into the cupboard on reversible runners. Additional baskets are also available.

### FEATURES:

- Keeps goods secure while travelling
- Includes 2 chrome plated baskets

### SPECIFICATIONS:

- Frame Dimension: 570mm(l) x 450mm(h)
- Basket Dimension: 455mm(l) x 110mm(h) x 75mm(d)
- Space Required: 140mm(w) x 570mm(h) x 475mm(d)

2 X 110MM BASKETS	000122
2 X 200MM BASKETS	000125
3 X 260MM BASKETS	000126



### ROLLOUT PANTRY BASKET

Replacement or spare pantry basket to suit roll out pantry (refer code 000125 - Rollout Pantry and 200mm Baskets). This is a chrome plated wire basket that clips onto the roll out pantry frame.

#### SPECIFICATIONS:

- Dimensions: 470mm(l) x 105mm(h) x 110mm(d)

000124



### ROLLOUT PANTRY BASKET

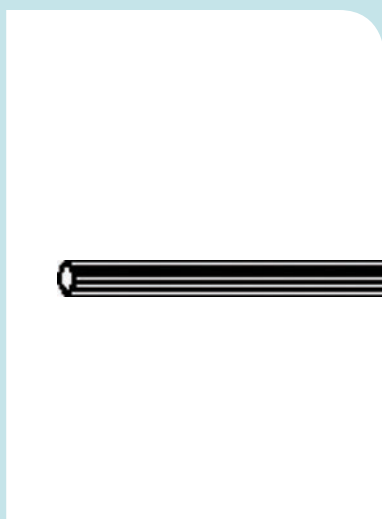
Replacement or spare pantry basket to suit roll out pantry (refer code 000122 - Rollout Pantry and 110mm Baskets). This is a chrome plated wire basket that clips onto the roll out pantry frame.

#### SPECIFICATIONS:

- Dimension: 455mm(l) x 200mm(h) x 75mm(d)

000127





### COFFEE TRAY RAIL

Retaining rail 19mm x 1.8m for narrow shelves. Decorative and functional. For use with pillar ends and throughs.

- Nickel

008215



### TOWEL RAIL 3.6M

#### SPECIFICATIONS:

- Stainless steel
- Length: 3.6m

STAINLESS STEEL 16MM

039112

STAINLESS STEEL 19MM

039113

CHROME PLATED 19MM

008203



### FLANGE RAIL OVAL SHAPE

To suit coffee tray rails. Chrome plated steel.

5/8" - 16MM RAIL OVAL SHAPE CHROME 008202

3/4" - 19MM RAIL OVAL SHAPE CHROME 008198



### PILLAR CENTRE RAIL

To suit coffee tray rails. Chrome plated steel.

5/8" - 16MM RAIL CHROME 008200

3/4" - 19MM RAIL CHROME 008196



### TRAY RAIL PILLAR THRU

To suit coffee tray rails.

BRASS

008220

NICKEL

008219



### PILLAR END

To suit coffee tray rails.

5/8" - 16MM RAIL CHROME 008201

3/4" - 19MM RAIL CHROME 008197

TRAY RAIL PILLAR END NICKEL 008223

008201

008197

008223



### TRAY RAIL PILLAR CORNER

To suit coffee tray rails.

BRASS

008221

NICKEL

008222



**UTILITY FASTENERS  
ALL PURPOSE MINI  
ELITE**

BENT  
ALL PURPOSE

035315  
035317



**ZINC PLATED STRAIGHT FASTENER**

035307



**AL-KO UTILITY FASTENER STRAIGHT**

035344



**UTILITY FASTENERS BOLT ON**

BOLT ON  
WELD ON

035320  
035322



**MILLARD POW PLASTIC/METAL LOCK  
BLACK**

- Push out window swivel lock
- Plastic lever with metal base
- Black

008553



**UTILITY LYNCH PIN TRACTOR CLIP B3  
8MM**

035385



**CAMLOCK-LONG TONGUE**

Bolt Lock 22mm.

008231



**NON SKID GRIP TAPE**

**FEATURES:**

- Anti slip grit surface improves footing on step ladders and trailer frames
- Dimensions: 50mm(w) x 18m(l) roll

000167



**FLY SCREEN SPLINE SLIMLINE**

Rubber spline (4.1mm diameter) to hold mesh securely in the designated groove of the fly screen extrusion.

008260



**FLY SCREEN SPLINE ROLLER**

Handy tool for pushing the spline and mesh into the extrusion without distorting the frame or cutting the mesh.

008262



**MILLARD/ALFAB POW GLAZE-WEDGE**

008552



**CABIN HOOK**

- 75MM WITH EYE 008182
- 100MM WITH EYE 008183
- 150MM WITH EYE 008185
- 200MM WITH EYE 008186
- CABIN HOOK EYE 008187



**CAMLOCK - LONG THREAD KEY/ALIKE**

**FEATURES:**

- Threaded cylinder lock commonly used on access doors
- 32mm

008242



**SWINGING BOLT AND PLATE 38MM (2PCE)**

007997



**SWINGING BOLT KNURLED NUT**

- Suit anti rattle catch.
- 1/4 SWING BOLT
- 3/16 MED 20MM WIDE

008003  
016422



**CAM MACHINE LOCK**

**FEATURES:**

- Short thread
- Threaded cylinder lock commonly used on access doors

035550



**VISCOUNT POW GREY KNOB LOCK**

- Nylon push out window lock.
- Grey

008556



**ROUND DOOR STOP AND SCREW 75MM**

- White

008228



**COMERANGLE BARS - WHITE**

008158

External fixings



**CAMLOCK**  
SHORT THREAD KEY/ALIKE 16MM  
LONG THREAD RANDOM KEYED

008240  
008243



**CYLINDER LOCK - No KEY**

- Chrome plated thumb operated camlock for baggage doors
- Not lockable
- 5/8" wing nut

008252



**GARAGE DOOR LOCK METAL FRONT FIXING**

Dimensions: 140mm(l) x 30mm(h) x 110mm(d)

008246



**FLY SCREEN TURN BUTTON 5/16**

A simple locking device for hinged fly screens.  
• Black

008258



**SCREEN DOOR LOCK**

Used on camper trailer doors and shower doors.  
• Silver

008244



**HOLDING CATCH ACCESS DOOR**

• White

008161



**FIAMMA SECURITY 46 PRO HANDLE**

Security handles take up little space when folded against wall. They serve as a useful handle to make entering and exiting the vehicle easier. They adapt to all doors, opening both to the right and left. Includes installation brackets, screws and internal counter brackets.

034093



**FIAMMA SECURITY DOOR HANDLE**

Fiamma Helping Hand Door Handle 460mm is made of solid aluminium. It serves as a convenient handle to make entering and exiting the vehicle easier. When closed back onto the door, it works as an anti-theft device.

000747





**GARAGE LOCK CAST TONGUE**  
**SPECIFICATIONS:**  
 Dimensions: 120mm(l) x 10mm(h) x 10mm(d)  
 008248



**NYLON CURTAIN GATHERING HOOK**  
 • White  
 007800



**ALUMINIUM MINI TOP GLIDE TRACK (DRILLED)**  
 Clear anodised, drilled without runners.  
**SPECIFICATIONS:**  
 Dimensions: 5m(l) x 10mm(h) x 5mm(d)  
 007779



**CURTAIN RUNNER (JAYCO)**  
 007808



**SCREW EYE AND EXPANDING WIRE**  
 SCREW EYE 007802  
 SCREW HOOK 007803



**CURTAIN TAB (JAYCO)**  
 007807



**END STOP PUSH IN**  
 To suit mini track.  
 007798



**GATHERING TAPE NATURAL**  
 PER METRE 007810



**METRO CURTAIN TRACK**  
 Metro curtain track 5m long.  
 • White  
 036495



**POWDER COATED ROD**  
**FEATURES:**  
 • Steel conduit  
 • Dimensions: 5m(l) x 6mm(diam)  
 • White  
 007771



**EXPANDING PLASTIC COATED WIRE**  
 007775



**SNAP IN MUSLIN BRACKET**  
 Use screws or double sided tape to attach to wall or ceiling.  
**FEATURES:**  
 • The removable cap fits onto 16mm curtain rod, then connects into the bracket. Simple design allows for easy removal of curtain clips  
 • White  
 007786



**CAFE CURTAIN CLIP**  
 BEIGE 007806



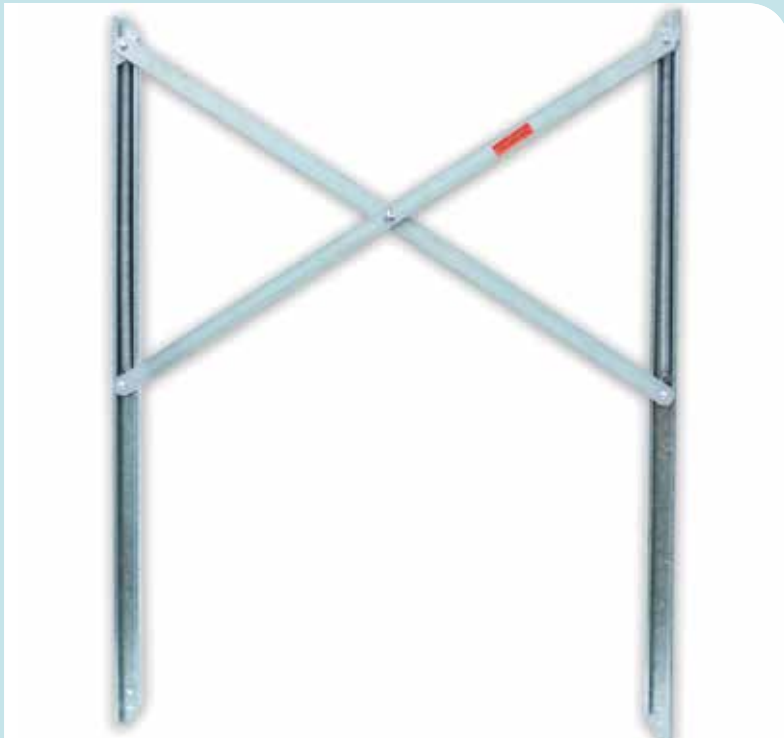
**STEEL CURTAIN GATHERING HOOK No 7**  
 007799



**METRO CURTAIN RUNNER**  
 To suit aluminium track (refer code 036495).  
 • White  
 035440



**REMI CONCERTINA DOOR**  
 Concertina doors are made for the RV industry and are practical and serviceable.  
**FEATURES:**  
 • Double head track and nylon easy slide bearings and glide runners  
**SPECIFICATIONS:**  
 • Dimensions: 1500mm(w) x 1900mm(h)  
 • Blue  
 007770



**CANOPY LIFTER**

Canopy lift mechanisms are used to raise and lower the roof of pop-top caravans and campers. Note:When replacing the lifter it is recommended that the opposite lifter be replaced at the same time to prevent undue stress.

NAME	SPRING TENSION	MAX WGT PER PCE	MAX LIFT MM	WIDTH MM	CODE
FLAT 700MM	STD	35KG	560	700	008341
FLAT 900MM	STD	40KG	685	900	008342
FLAT 900MM	SOFT	30KG	685	900	008344
FLAT 1200MM	STD	35KG	990	1200	008345



**CANOPY LIFTER TUBULAR**

**SPECIFICATIONS:**

- Spring Tension: Standard
- Maximum Lift: 685mm
- Width: 900mm
- Max Weight: 40kg per piece
- Note:When replacing the lifter it is recommended that the opposite lifter be replaced at the same time to prevent undue stress

008353



**SPRING FOR FLAT LIFTER**

- FLAT 700MM LIFTER 008350
- FLAT 900MM LIFTER 008351
- FLAT 1200MM LIFTER 008352
- TUBULAR CANOPY LIFTER 008359



**CAMPER WIND-UP MECHANICAL HANDLE**

008328



**PULLEY WHEEL FOR BENDS/TRACKS**

008320



**CANOPY LIFT NYLON ROLLER + PIN**

- BREHA CANOPY LIFT NYLON ROLLER + PIN 008349
- TUBULAR CANOPY LIFT NYLON ROLL AND RIVET 035379
- FLAT LIFTER ROLLER BLACK 008347
- WHITE ROLLER TUBULAR LIFTER WHITE 008355
- FLAT LIFTER ROLL RIVET 008348
- RIVET FOR TUBULAR LIFTER 008356



**SLUGS FOR CAMPER TRAILER**

Set of 4.

008307



### CAMPER FLEXIBLE PUSH ROD

#### SPECIFICATIONS:

- Length: 1677mm

008305



### CAMPER TRAILER BED RAIL

#### SPECIFICATIONS:

- Dimensions: 1275mm(l) x 30mm(h) x 50mm(d)

008290



### STAINLESS STEEL CABLE 3/32"

To suit wind up mechanisms. Per metre.

008332



### POPTOP PLASTIC TENSIONER

Elasticised tensioner to keep pop-top sleeve taut whilst elevated and tucked inside the body when lowered. Spare elastic is available.

TENSIONER 320MM

008429

TENSIONER 390MM

008433

ELASTIC 168MM

034083

ELASTIC 210MM

034084



### BONNET CLAMP STRAIGHT WITH CLIP

Roof clamp that has a straight fixing bracket. Includes securing clip.

- Chrome

008337



### HATCH FASTENER

Standard flat mounting.

#### FEATURES:

- Long shank (45mm length)
- Lever action with an eye for a padlock

#### SPECIFICATIONS:

- Dimensions: 70mm(l) x 20mm(h) x 45mm(d)

008275



### TOGGLE CLAMP WITH PLATE

Special locking catch mechanism prohibits the latch opening accidentally.

#### SPECIFICATIONS:

- Plate included
- Dimensions: 160mm(l) x 20mm(h) x 40mm(d)

008276



### DROP NOSE PIN

This simple locking device has many applications such as securing the raiser arm roof clamp.

#### SPECIFICATIONS:

- Dimensions: 70mm(l) x 20mm(h) x 30mm(d)

008289





**CAMPER ROOF CLAMP STANDARD**

This clamp is commonly used on pop top caravans and wind up campers to hold down the roof while the trailer is in storage or while travelling.

**FEATURES:**

- Includes clamp and J clip
- Australian made
- Zinc plated

**GOLD** 008266  
**SILVER** 008265



**CAMPER ROOF CLAMP LOCKABLE**

This clamp is commonly used on pop top caravans and wind up campers to hold down the roof while the trailer is in storage or while travelling.

**FEATURES:**

- Includes toggle clamp, space for lock and extra locking bracket suitable for a small padlock (not included)
- Zinc plated
- Silver

008267



**POP TOP INTERIOR SUPPORT**

Internal support for pop top camper roof.

035303



**TONGUE - STANDARD ROOF CLAMP**

Replacement zinc plated tongue for the standard and locking silver clamp.

- Silver

008269



**TONGUE - LOCKING ZINC PLATED ROOF CLAMP**

Replacement locking tongue for the silver or gold locking clamp.

- Silver

008271



**J CLIP - ROOF CLAMP**

Replacement J Clip for both standard and locking silver clamps.

- Silver

008270



**CAMPER TRAILER LIFTER**

3-stage lifter.

**SPECIFICATIONS:**

- Outer Tube Dimensions: 710mm(l) x 32mm(w) x 32mm(d)

008302

