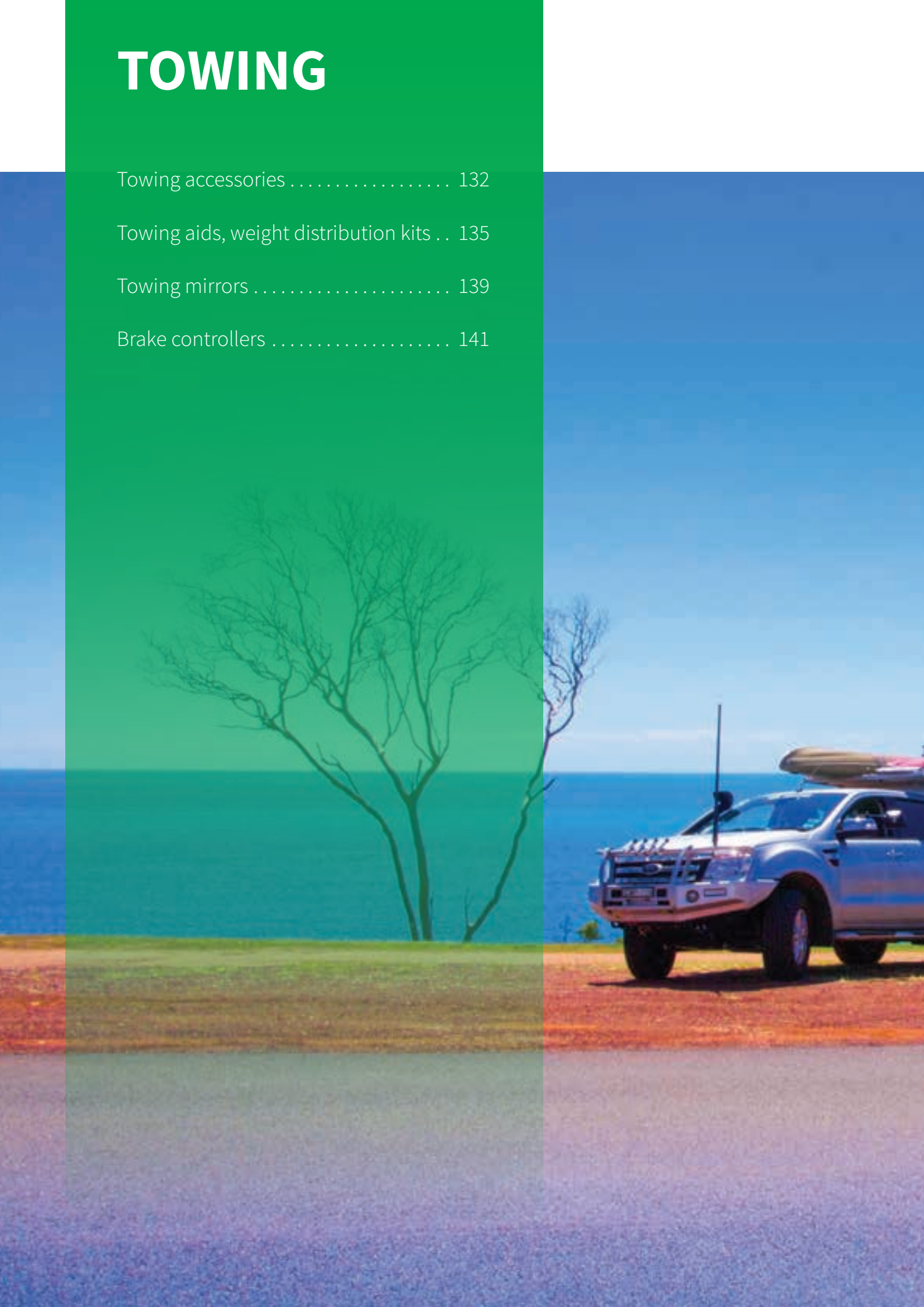


TOWING

Towing accessories	132
Towing aids, weight distribution kits ..	135
Towing mirrors	139
Brake controllers	141





TOWING ACCESSORIES



TOWBALL - MACHINED 006252

Standard towball size

SPECIFICATIONS:

- 50mm x 62mm x 7/8"
- 62mm shank
- Towing Capacity: 3500kg
- Chrome plated



TOWBALL HIGH RISE - MACHINED 006254

High rise towball size with 25mm rise

SPECIFICATIONS:

- 50mm x 51mm x 7/8"
- 51mm shank
- Towing Capacity: 2000kg
- Chrome plated



TOWBALL 3T - MACHINED 036443

SPECIFICATIONS:

- 50mm x 25mm
Towing capacity: 2000kg



TOWBALL - MACHINED 006250

Standard ball size, extra long shank for fitting stabiliser blocks and bike racks, etc.

SPECIFICATIONS:

- Towing Capacity: 2500kg
- Ball size: 50mm
- Shank Size 7/8" (diam) x 80mm(l)
- Chrome



TOWBALL - MACHINED 006255

1 7/8" chrome plated towball

SPECIFICATIONS:

- Towing Capacity: 2270kg.
- Shaft length 51mm
- Shank Size: 7/8" (diam x 51mm(l))
- Chrome



BLACK PVC TOWBALL SOFT COVER 000849

Push on towball covers provide protection from grease.

SPECIFICATIONS:

- Suits 50mm and 1 7/8" towballs
- Sold individually
- Black



SHIN PROTECTOR ARK TP11 039991

Made from soft rubber, fits securely over towbar goose neck.

SPECIFICATIONS:

- Black



ALKO 50MM TOWBALL 036775

Designed for use with Alko stabiliser coupling.



PLASTIC TOWBALL COVER BLACK HARD 000848

Push on towball covers provide protection from grease. With spring clip

SPECIFICATIONS:

- Suits 50mm and 1 7/8" towballs
- Sold individually
- Black



COUPLING LOCK TRAILER COP
000385

Fits quick release couplings that take a 50mm ball. Expands into coupling.

FEATURES:

- Easy to operate



TOWBALL SPANNER
006256

Used for towball nuts, snap-up bracket bolts, D shackles, towbar tongue bolts and adjustable ball mount bolts and nuts.



CHROMED PLASTIC TOWBALL COVER
000850

Push on towball covers provide protection from grease. Suits 50mm and 1 and 7/8" towballs.

SPECIFICATIONS:

- Chrome



DO NOT OVERTAKE TURNING VEHICLE STICKER
042870

If your tow rig is near 7m long, a sign like this should be displayed on the back of your vehicle.

SPECIFICATIONS:

- Dimensions: 300mm(l) x 125mm(h)
- Regulations vary by state
- Reflective yellow



COUPLING LOCK WITH 2 KEYS
042847

Anti-theft coupling lock.

FEATURES:

- Guards against trailer tow-away theft
- Works with all common ball couplings
- Advanced locking mechanism resists picking and prying
- Resistant to rust and corrosion
- Easy to set-up

SPECIFICATIONS

- Includes 2 identical keys
- 1 year warranty



COUPLING LOCK AND PADLOCK
000395

Secures trailer when attached or not attached to a vehicle.

FEATURES:

- Heavy duty 2 position locking system
- Includes padlock



PREMIUM COUPLING LOCK - COUPLAMATE DUAL FOR CAR AND TRAILER
000392

FEATURES:

- Easy to install
- Dual lock for car and trailer

SPECIFICATIONS

- 8mm soli plate steel
- Fits most 50mm couplings
- Includes padlock
- Not to be used while travelling



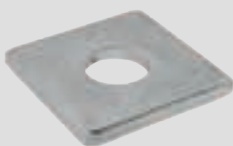
COUPLAMATE BALL ATTACHMENT AID

- 001024 - BALL ATTACHMENT AID
- 001025 - REMOVABLE WING
- 001026 - BASE PLATE
- 001027 - PACKING WASHER

The Couplamate is an innovative self-aligning accessory designed to locate the trailer coupling directly over the ball without assistance, physical effort or guiding. It can also be used as a theft deterrent by securing the trailer to the vehicle.

FEATURES:

- Suits standard towball and torsion bar fittings
- Long shank towballs are recommended when used in conjunction with torsion bar fittings
- Wings can be locked in the security position as a theft deterrent whilst towing or when the vehicle and/or trailer are left unattended



Packing washer used to increase the height of the towball in relation to the wing

TOWING ACCESSORIES



PULL PIN HITCH LOCK PRIME 18-2058 036448

Keeps the tow hitch secure with a lockable pull pin.

FEATURES:

- Locking pins for Reese style towbars - secures the hitch with a keyed locking pin
- Prime locking pull pin

SPECIFICATIONS:

- Chrome
- Comes with 2 keys



HAYMAN REESE HITCH LOCKABLE PULL PIN 000914

Enables you to lock your trailer ball mount onto the towbar preventing theft.

FEATURES:

- Features a dust and weather proof cover to protect the lock



HAYMAN REESE DUAL CAM SWAY CONTROL (26002) 000832

The Hayman Reese Dual Cam High-Performance Sway Controller is the premier method of controlling sway, and the only product of its kind in the Australian market. Unlike other sway controllers, it works to control sway from the start rather than once it has begun. When towing in a straight line, the spring bars on either side of the trailer's A-frame are locked in position. This essentially creates a 'rigid' connection between tow vehicle and trailer and minimises the effects of induced sway caused by high crosswinds or passing vehicles. Usually the spring bars ride in a locked-in position, even on sharp curves. However, when cornering manoeuvres are required, the cams automatically slide out of their fixed position to permit full radius turns. When the manoeuvre is short and abrupt, the spring bars seek a straight-line towing angle that helps the tow vehicle retain control. The Dual Cam works to hold down the start of swaying activity while at the same time allowing free and easy vehicle and trailer interaction. It's installed on the trailer and therefore, doesn't require adjustment. The Dual Cam HP is fitted in conjunction with any Heavy Duty Hayman Reese Weight Distribution System that includes high performance spring bars with cams. It is ideal for any trailer with a ball weight in excess of 200kg.



ARK LOCKABLE PULL PIN 000913

Pull pin is straight for easier access in some towbars. Enables you to lock your towball mount onto the towbar preventing theft.

FEATURES:

- Includes spring clip for extra protection
- Towing capacity: 3500kg

SPECIFICATIONS:

- Chrome



COUPLMATE STAINLESS STEEL HITCH LOCK 85MM 000934

For use as a trailer lock to replace existing pin.

FEATURES:

- Suits all receiver types

SPECIFICATIONS:

- 85mm
- Longer shaft for use in difficult installations
- Stainless steel



COUPLMATE HITCH PIN LOCK 65MM 000933

For use as a trailer lock to replace existing pin.

FEATURES:

- Suits all receiver types

SPECIFICATIONS:

- 65mm
- Chrome plated



PULL PIN HITCH LOCK + TREG LOCK 036450

Used to lock a 4WD Treg or Trigg coupling to a vehicle.

FEATURES:

- Kit includes lock pin and pull pin lock
- Lock pin secures the coupling to the hitch
- Pull pin secures the hitch to the vehicle
- Keyed alike

HAYMAN REESE INTERLOCK TOWBALL MOUNTS

042922 - 166MM SHANK. MAXIMUM TOWING CAPACITY 250KG INCLUDES TOWBALL

042924 - 5 HOLE ADJUSTABLE. MAXIMUM TOWING CAPACITY 2250KG INCLUDES TOWBALL

042925 - TOWBALL ONLY 50MM CAPACITY 3500KG INTERLOCK

042926 - FLAT SIDED TOWBALL ONLY 50MM CAPACITY 3500KG



CAMEC WEIGHT DISTRIBUTION KIT 041128

Restores natural balance to your tow vehicle when towing a trailer with a laden ball weight between 80kg and 135kg. The kit uses a four bar (4 x 19mm) system and the snap up brackets make raising and lowering the chain effortless. Triangular plates mean you can adjust and equalize each pair of bars together.

FEATURES:

- Includes snap-up bracket handle
- For use with any style towbar using a

50mm towball

KIT INCLUDES:

- Weight distribution head
- 4 spring bars with pins
- Snap up brackets for A-frame with safety pins
- Connecting chains with triangle brackets and D-shackles



HAYMAN REESE CLASSIC MEDIUM DUTY WEIGHT DISTRIBUTION

CODE	CLASSIC SERIES	SPRING BAR	MAX TOWING WEIGHT
040082	600LB	28"	135 - 275KG
040081	600LB	30"	135 - 275KG
040084	800LB	28"	275 - 365KG
040083	800LB	30"	275 - 365KG

Distributes the ball weight across both axles of the tow vehicle to restore the correct steering and suspension geometry, braking efficiency and headlight alignment.

FEATURES:

- Trunnion style 30" spring bar
- Head includes integrated friction sway tab
- Compatible with dual cam sway control (not included)
- Drop shank allows for 6 incremental height adjustments
- Hex cam adjustment washer allows for up to 6 head angle adjustments



PRO SERIES WEIGHT DISTRIBUTION

Distributes the ball weight across both axles of the tow vehicle to restore the correct steering and suspension geometry, braking efficiency and headlight alignment.

FEATURES:

- Round/under slung 30" spring bar
- Head includes integrated friction sway tab
- Drop shank allows for 6 incremental height adjustments
- Hex cam adjustment washer allows for up to 6 head angle adjustments
- Suitable for A-frames up to 6"

CODE	SERIES:	SPRING BAR	MAX TOWING WEIGHT
041822	PRO SERIES 600LB	30" ROUND	135-275KG
041823	PRO SERIES 800LB	30" ROUND	275 - 365KG



Hayman Reese have a range of drop shanks available. Suitable for 4WDs and other vehicles where the lowest/highest setting is not low or high enough.

- 040469 STANDARD
- 040470 30MM
- 040471 95MM
- 040472 160MM



HAYMAN REESE 1200LB SUPER HEAVY DUTY WEIGHT DISTRIBUTION HITCH 30" SPRING BARS (712003)

040085

FEATURES:

- Head includes integrated friction sway tab
- Compatible with dual cam sway control (not included)
- Drop shank allows for 6 incremental height adjustments
- Manufactured for serious heavy duty towing, it has a fine tooth adjustment washer which allows for up to nine head angle adjustments



HAYMAN REESE STANDARD MEDIUM DUTY WEIGHT DISTRIBUTION

Distributes the ball weight across both axles of the tow vehicle to restore the correct steering and suspension geometry, braking efficiency and headlight alignment.

FEATURES:

- Round/under slung 30" spring bar
- Head includes integrated friction sway tab
- Compatible with dual cam sway control (not included)
- Drop shank allows for 6 incremental height adjustments
- Hex cam adjustment washer allows for up to 6 head angle adjustments
- Suitable for A-frames up to 6"

CODE	SERIES:	SPRING BAR	MAX TOWING WEIGHT
040572	CLASSIC 600LB	30"	135-275KG
040468	CLASSIC 800LB	30"	275-365KG

TOWING AIDS, WEIGHT DISTRIBUTION KITS



PRO SERIES FRICTION SWAY CONTROL (PRO4000)

043016

Friction Sway Control uses friction to resist pivotal movement and thereby works against the effects of induced sway. It operates on the principle of "stiffening" the coupling between the tow vehicle and trailer. The degree of "stiffening" or friction is adjusted to suit various trailer weights and towing conditions. Its operation is simple and uncomplicated. It doesn't prevent the generation of sway; it simply works to resist the forces once they have started.

FEATURES:

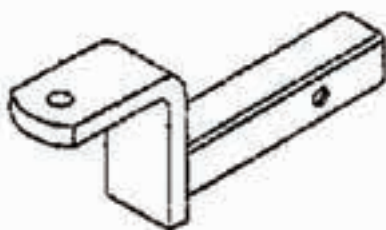
- Installs and removes easily
- Removes with two spring locking pins
- Heavy construction for added reliability
- Friction brake keeps trailer and tow vehicle stable
- Quick attachment to trailer frame and ball mount
- Can only be used on one side



DO35 WEIGHT DISTRIBUTION

044644 - STANDARD ADAPTOR
 044643 - CLASSIC ADAPTOR
 044634 - COUPLING V3-R
 044635 - COUPLING V3-I
 044636 - DI-LOCK PIN ASSEMBLY
 044637 - FORGED TOW PIN 7/8
 044638 - COVER DO35 TOWING PIN

Hayman Reese Weight Distribution systems are not specifically designed for use with the Cruisemaster off-road couplings, as the extra articulation that the off-road coupling provides can sometimes allow contact between the HR WDH system and coupling which may possibly result in damage to either component. Cruisemaster has designed a range of adaptors to suit the various HR WDH systems available. These adaptors reposition the towing point which allows a DO35 to articulate without any chance of contact. Hayman Reese is the only brand of WDH that these adaptors have been tested and approved for use with.



HAYMAN REESE STRAIGHT TOWBALL MOUNT (21196)

000886

Does not include towball.

SPECIFICATIONS:

- Maximum Towing Capacity: 2500kg
- Suits 50mm hitch receiver



HAYMAN REESE ADJUSTABLE TOWBALL MOUNT (70207)

042921

Includes towball.

SPECIFICATIONS:

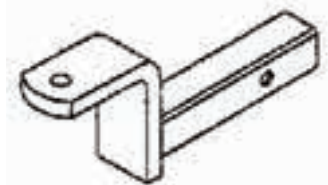
- Maximum Towing Capacity: 3500kg
- Suitable for use with DO35 when not using weight distribution



HAYMAN REESE TOWBALL MOUNT 12" (21171)

035292

- 2250KG capacity
- Commonly used for utes with overhanging trams



HAYMAN REESE ADJUSTABLE TOWBALL MOUNT (21187)

000884

Adjustable holes allow for easier leveling of car and tow vehicle. Does not include towball.

SPECIFICATIONS:

- Maximum Towing Capacity: 1500kg
- Suits 50mm hitch receiver



HAYMAN REESE TOWBALL MOUNT - STRAIGHT

000878

250MM 21176

000879

200MM 21177

SPECIFICATIONS:

- Maximum towing capacity: 2500kg
- Suits 50mm hitch receiver



ALKO TOWBALL RETENTION PLATE

043317

Fits between the towbar tongue and the towball to prevent rotation of the ball.

SPECIFICATIONS:

- Hole size: 23mm
- Overall size: 100mm(l) x 60mm(w)



CAMEC BALL WEIGHT SCALE

043231

Measures up to 350kg.

FEATURES

- Simple to use for approximate ball weight
- Readings in kilograms and pounds
- Help to select your weight distribution kit and other accessories
- Know that your RV is packed and balanced appropriately before travel for better handling and performance



HAYMAN REESE U BOLT KIT (55455BL)

000908

Joins spring bar to spring bar chains.

SPECIFICATIONS:

- 3/8"
- Includes washer and nut



HAYMAN REESE 1/2" X 2" UNC BOLT SET (55060)

000910

SPECIFICATIONS:

- 1/2" x 2"



HAYMAN REESE SNAP-UP BRACKET ONLY (21120)

035311

For use with Hayman Reese hitch.

- Please note: These do not come with a bolt. The bolt is 1/2" x 2 1/2" UNC and are not grade specific.

FEATURES:

- To suit weight distribution hitch
- Bolt (not included) screws into clamp bracket to A-frame of caravan



HAYMAN REESE SNAP UP BRACKET HANDLE (55050)

000912

For use with 035311 snap up bracket



BOLT KIT FOR HAYMAN REESE (70011)

000925

Replacement bolt kit to suit Hayman Reese adjustable ball mount.

FEATURES:

- Includes bolts, nuts and washers



EQUALIZER 6" A-FRAME BRACKET KIT

000822

Galvanised equalizer bracket set for use if your A-frame is more than 100mm deep. Suits 6" (150mm) A-frames.

SPECIFICATIONS:

- Length: 150mm
- Weight: 2.33kg
- Pack of 2



HAYMAN REESE SAFETY PIN-SNAP-UP BRACKET (55180)

000911

Stops snap up bracket from disengaging. Suit Hayman Reese weight distribution hitch.

SPECIFICATIONS:

- Diameter of Pin: 4.7mm and outside
- Width: 30mm
- Weight: 20gms



FRICTION SWAY TOWBALL ADAPTOR FOR HAYMAN REESE FRICTION SWAY CONTROL

043273

(Refer code 000825).



EQUALISER A-FRAME BRACKET KIT

000820

Replacement equaliser brackets and B-plates (with bolts) Pack of 2.



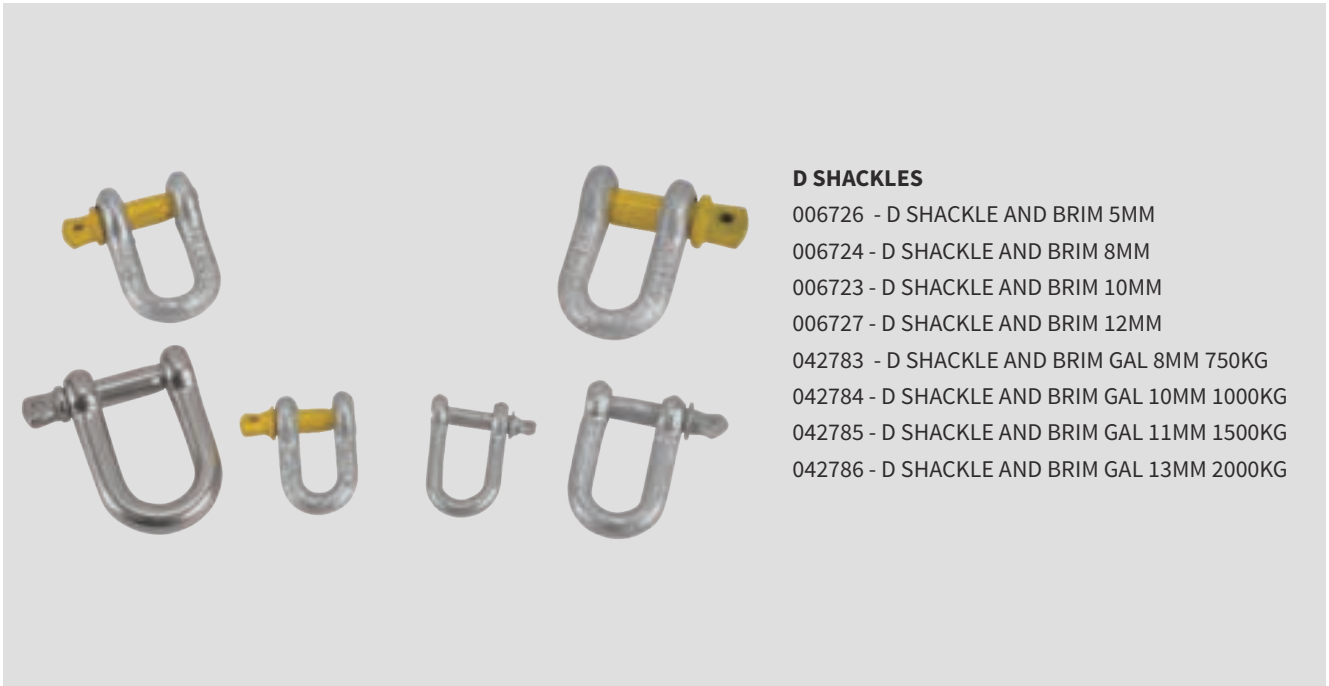
HAYMAN REESE HITCH PULL PIN

000915

000916 - EXTRA PIN

Standard hitch pin

TOWING AIDS AND WEIGHT DISTRIBUTION KITS



D SHACKLES

- 006726 - D SHACKLE AND BRIM 5MM
- 006724 - D SHACKLE AND BRIM 8MM
- 006723 - D SHACKLE AND BRIM 10MM
- 006727 - D SHACKLE AND BRIM 12MM
- 042783 - D SHACKLE AND BRIM GAL 8MM 750KG
- 042784 - D SHACKLE AND BRIM GAL 10MM 1000KG
- 042785 - D SHACKLE AND BRIM GAL 11MM 1500KG
- 042786 - D SHACKLE AND BRIM GAL 13MM 2000KG



HAYMAN REESE TOWBALL MOUNT PINTLE HOOK 210MM LONG (21166) 035295

Pintle Hooks are the alternative to the standard 50mm towball. Pintle Hooks are particularly used in commercial applications.

SPECIFICATIONS:

- Pintle hook adaptor to suit heavy duty 50mm x 50mm hitch receiver towbars
- Trailer ball mount with 195mm lug to suit pintle hook
- Size: 210mm tube length, 83mm from pull pin hole to end of tube
- Maximum Load Weight: 3500kg



PINTLE HOOK ADAPTOR (21199) 000889

To suit heavy duty 50x50mm hitch receiver towbars. Maximum load: 3500kg.

- Size: 240mm tube length
83mm from full pin hole to end of tube



BACKSAVER - CLASSIC RV TOWAID 000407

Adjustable mechanical aid to assist placing equalizer rods into chassis brackets - saves back muscles.



R CLIPS 000811 - 3MM FOR RV TOWAID 000812 - 4MM



REGO LABEL HOLDER PLASTIC RECTANGULAR 000565

Suitable for mounting next to a number plate on trailers and caravans.



CAMEC SUCTION CUP TOWING MIRROR
040656

Quick and easy to fit and suitable for most vehicles.

- FEATURES:**
- Universal fitting
 - Adjusts with vehicle's power mirror
 - Sold individually



CAMEC CLIP ON TOWING MIRROR (FLAT GLASS)
040657

Quick and easy to fit and suitable for most vehicles.

- FEATURES:**
- Universal fitting
 - Quick and easy to fit
 - Aerodynamic and durable
 - Supplied with straps for added security
 - Sold individually

CAMEC HEAVY-DUTY DOOR MIRROR RATCHET STRAP TYPE
034194

Fits most vehicles, this heavy duty door mounted mirror fits firmly and offers excellent vision. The large mirror head is attached to an adjustable extension arm.

- FEATURES:**
- Ratchet T bar ensures firm fitting
 - Quality rubber mounting pads
 - Suitable for towing caravans, campers, horse floats, boats, etc
 - Installation in minutes

- SPECIFICATIONS:**
- Extends from 330mm to 470mm
 - Mirror Head: 229mm(w) x 155mm(h)
 - Pack of 2
 - Optional Wide Door Strap and bracket available



ENZO MAGNETIC TOWING MIRROR
000964 - ENZO TOWING MIRROR
000965 - SUPPORT SCREW KNOB

The impressive Enzo Magnetic Mirror gives you the most stable and vibration free view of your caravan and the road behind you.

The unit can be installed in seconds with no tools required, its practical and safe to use, fits almost all vehicles and the magnetic pads are protected by an anti-scratch material.

- FEATURES:**
- Large Magnetic Pad - Keeps the mirror extra secure and won't damage the paint work because of its anti scratch material.
 - Fits independently - Keeps your existing mirror free.
 - Easily Fitted - Fits in seconds with no tools required.
 - Robust Design - Made from strong, quality non-corrosive materials.
 - Large Mirror - Gives you the best possible view of the towed vehicle.
 - Sold individually



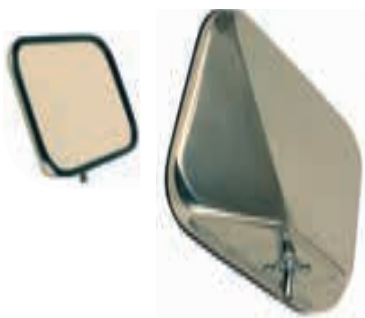
CAMEC HEAVY-DUTY MIRROR ADJ SCREW/NUT
036577

Replacement adjustable screw and nut to suit Camec Heavy Duty Mirror (refer code 034194).



CAMEC HEAVY-DUTY MIRROR BRACKET AND STRAP
034827

Camec Heavy Duty Mirror bracket and strap to suit wide door (refer code 034194). Suit wide door



CAMEC HEAVY-DUTY MIRROR HEAD ONLY
000995

Replacement heavy duty mirror head to suit Camec Heavy Duty Mirror (refer code 034194).



CAMEC HEAVY-DUTY MIRROR RATCHET/SPRING
036576

Replacement ratchet and spring to suit Camec Heavy Duty Mirror (refer code 034194).



CAMEC HEAVY-DUTY MIRROR STANDARD STRAP/HOOK
036575

Replacement heavy duty mirror strap and hook to suit Camec Heavy Duty Mirror (refer code 034194).

TOWING MIRRORS



TOWING MIRROR 4X4 STRAP ON XL

000956 - MIRROR

000999 - REPLACEMENT STRAP ONLY

001002 - REPLACEMENT BUCKLE ONLY

This mirror suits extra large mirrors and has two pivoting arms.

FEATURES:

- Extension arm to fit extra large mirrors
- Fits most standard mirrors and includes articulated arms
- Flat clear lens

SPECIFICATIONS:

- Durable plastic
- UV stabilised to suit Australia's climate
- Sold individually



ORA TOWING MIRROR - CLIP ON

000962

Suits 2WD and 4WD vehicles.

FEATURES:

- This mirror can be extended and swiveled horizontally and vertically
- Easily installed and removed
- Clear visibility when towing vans up to 2.4m wide
- Easily adjusted from inside car
- Pack of 2

COPPA ROSSA/ORA TOWING MIRROR SPARE PARTS

000970 COPPA ROSSA MIRROR SUPPORT ARM

000972 COPPA ROSSA MIRROR KNOB ALSO SUITS NEW STYLE ORA

000973 COPPA ROSSA MIRROR RUBBER DISC ALSO SUITS NEW STYLE ORA

000975 COPPA ROSSA MIRROR SUCTION CUP

000976 COPPA ROSSA MIRROR "T" PIECE

000979 COPPA ROSSA SUCTION SUPP KIT ARM/CUP/TRIANGLE SUITS NEW STYLE ORA

039159 ENZO MIRROR KNUCKLE JOINT

000965 ENZO MIRROR SUPPORT SCREW KNOB

001004 ORA TOWING MIRROR - STANDARD ARM

001007 ORA TOWING MIRROR - MAG SUPPORT

001011 ORA TOWING MIRROR EXTENSION STRAP WITH SUCTION CUP OLD ORA

001013 ORA TOWING MIRROR - MIRROR HEAD

001016 ORA TOWING MIRROR TRIANGULAR MOUNT NEW ORA AND COPPA ROSSA

038125 ORA HOOK STRAP SUIT MK3 2100 MIRROR

038126 ORA LOBE KNOB

036128 ORA WIDE HOOK TO SUIT 210P0 MIRROR MK3

001003 ORA TOWING MIRROR LONG ARM SET PAIR



BIG RED TOWING MIRROR

000968

Suitable for wider loads. Big Red extends 500mm from the existing side mirror giving unparalleled vision down the side of the vehicle (car/boat/van). The unit can be installed in seconds with no tools required and is also easily removed.

FEATURES:

- Extra wide vision
- Fits securely to the existing wing mirror with magnetic support for additional stability
- Won't scratch paint work
- Strong, quality non corrosive materials
- Magnetic pads protected by an anti-scratch material
- Mirror clamp can be installed on top or below mirrors
- Sold individually



TOWING MIRROR STRAP ON STANDARD WITH CONVEX MIRRORS

000986

Dual strap on mirror, suits 4WDs.

SPECIFICATIONS:

- 2/3 flat clear glass fixed on mirror
- 1/3 adjustable convex lens
- Sold individually



COPPA ROSSA DOOR MIRROR-SINGLE

000969

The Coppa Rossa is an extremely stable and effective towing mirror that suits both sides of a towing vehicle. Featuring a long improved mounting device, and a bracing arm that attaches to the car door with a suction cup. Easy to install and strong and stable. The mounting device is designed to provide a snug fit to the most awkward of side mirror shapes. The towing mirror itself can be adjusted and swiveled to suit a variety of positions. The addition of the

suction support brace will prevent fold-in and vibration, often experienced with clip-on mirrors.

FEATURES:

- Fits most vehicles, strong and stable
- Vibration resistant
- Easily installed and removed
- No tools needed
- Sold individually



CAMEC BREAKAWAY SYSTEM SINGLE OR DUAL AXLE

040119

041767 - REPLACEMENT BATTERY

Install on your caravan or trailer A-frame or in any protected position. It includes a battery that can apply your caravan or trailer electric brakes for at least 15mins in the event the caravan or trailers is disconnected from the tow vehicle. This is a mandatory addition to any caravan or trailer that exceeds 2.0 tonnes.

FEATURES:

- Charging of the battery can be done via the tow vehicle auxiliary line
- Rechargeable battery included, manual test circuit and battery charge indicator
- Single and dual axle, compact and easy to install
- Includes breakaway switch
- Test circuit included and battery charge level indicator



BREAKSAFE BATTERY 4021

000941

Replacement batteries for the Breaksafe unit.

SPECIFICATIONS:

- 12 volt
- 7aH
- 93mm(h) x 65mm(w) x 152mm(l)
- Weight: 2kg



CAMEC REMOTE BATTERY MONITOR TO SUIT CAMEC BREAK AWAY SYSTEM

041764

Used in conjunction with the Camec Breakaway System, it delivers a visual and audible warning to the driver if the battery charge in the Camec Breakaway System falls to such a level that if the system is engaged it is incapable of maintaining brake actuation for at least 15 minutes.

FEATURES:

- Easy to mount



BREAKAWAY KIT TEKONSHA (2028)

000939

000938 - SWITCH TEKONSHA (MODEL 2010)

Lockable breakaway kit for all single, tandem and tri-axle breakaway applications.

FEATURES:

- Kit contains a polymer battery case with A-frame or post mounting bracket and a 12V sealed rechargeable 5A battery.



BREAKAWAY KIT HOPKINS

042758

The Engager Breakaway Kit features simple wiring for easy installation. Does not include any remote monitoring function and can not be used for RVs registered in NSW.

BREAKSAFE REPLACEMENT COIL AND PIN

042482

BREAKSAFE BREAKAWAY SWITCH ONLY

042483



BREAKAWAY KIT 6000 BREAKSAFE

000940

6000 KIT

039363

BREAKSAFE

REMOTE MONITOR RM6000

Designed to automatically apply the electric brakes and brake lights on the trailer in the event of an accidental separation from the tow vehicle.

FEATURES:

- Automatically recharges when connected to tow vehicle
- Compact and easy to install

SPECIFICATIONS:

Please note: A unit of this type must be installed on trailers in excess of 2000kg if built after July 1989.

- Dimensions: 64mm(w) x 25mm(h) x 50mm(d)
- Weight: 80gm (039363)



SMARTCHECK BATTERY MONITOR

042415

Hayman Reese Smartcheck Battery Monitor enables the remote monitoring of the charge of up to four batteries located in the vehicle and/or trailer. Additional sensors required for extra batteries



12V 1A SLA BATTERY CHARGER

044433

A mains powered Lead Acid battery charger designed for 12V batteries. Features intelligent automatic charge controller to stop charging when the battery is full and maintain the battery with a 'floating' charge mode. This feature allows you to leave the charger connected to the battery without risk of overcharging and know your battery is always ready to go. Includes a 2m long cable with interchangeable DC plug and Alligator clips.

SPECIFICATIONS:

- Charging voltage: 12V
- Charging current: 1A
- Dimensions: 70mm(l) x 40mm(d) x 40mm(w)

BRAKE CONTROLLERS



BRAKE CONTROLLER PRODIGY (90185/90885)

000949 - PRODIGY 90185/90885

000950 - PRODIGY POCKET MNT KIT 90185

000951 - PRODIGY 3FT HARNESS KIT 90185

Requires no manual leveling and is a break through among inertia-activated brake controls. Equipped with a self adjusting sensing device to allow for easy, flexible installation from nearly horizontal to vertical. It constantly adjusts itself to the position of the tow vehicle.

FEATURES:

- Allows application of more initial braking power when towing heavier trailers
- Inertia control works proportionally in reverse - great for backing into tough spots
- Diagnostic checks for proper connection or shorted magnet condition
- Power saving mode - reduces drain on battery when vehicle not in use

SPECIFICATIONS:

- Dimensions: 115mm(l) x 27mm(h) x 80mm(d)
- Weight: 520gms
- Made for up to 4 axle trailer brake systems



BRAKE CONTROLLER VOYAGER (9030)

000947

This easy to install electronic brake controller features advanced electronics that minimises false braking to give a smoother ride, even on the roughest roads.

FEATURES:

- Compact and easy to install
- Minimises false braking
- Suits 2-4 magnets
- Includes mounting kit



BRAKE CONTROLLER TEKONSHA P3 (90195)

038367

One of the more advanced approaches to trailer brake controls. Requires no manual leveling. Self adjusting sensing device to allow for easy, flexible installation from nearly horizontal to nearly vertical. Will constantly adjust itself to the position of tow vehicle.

FEATURES:

- Allows the user to switch between electric over hydraulic or electric trailer brake mode
- Highly advanced - easy to understand roadside diagnostics
- Easy access - controls upfront
- Compact dash hugging design
- Easy to use - clip mounting system

SPECIFICATIONS:

- Dimensions: 115mm(l) x 27mm(h) x 80mm(d)
- Weight: 650gms
- Made for up to 4 axle trailer brake systems



BRAKE CONTROL HAYES ENERGIZE 3

000937

Energize III electronic brake controller is a sensing device that automatically monitors and measures tow vehicle deceleration and applies the trailer brakes in direct proportion. It reacts instantly to any change in brake pedal pressure and ensures controlled, smooth stops. Available for all single and tandem trailers equipped with electronic brakes.

FEATURES:

- Compact, rugged case
- Trailer/tow vehicle stop lights operate when trailer brakes are applied automatically or manually
- Wide range of mounting positions
- Compatible with all electronic systems (ABS, Cruise, etc)
- Smooth, proportional trailer braking



HAYMAN REESE BRAKE COMPACT CONTROLLER

042927

The Hayman Reese Compact joins the already reliable range of Hayman Reese Brake Controls and, like the name suggests, is compact enough to be installed when space is a big factor. The controls are mounted in the dash, with the main control unit mounted out of sight. Very few tools are needed to carry out the installation with a drill, crimp tool, wire cutter and circuit tester all you need to complete your job.

FEATURES:

- Compact size
- Electric trailer brake control for 1-3 axles
- Plug and play feature allows for quick and easy connection with the Hayman Reese Smartclick brake control harness
- Unique sync adjustment for towing different trailers
- Flexible and neat mounting options
- Green LED indicator monitors a secure connection with your trailer
- Remote mount ensures no issues with hitching the brake control unit or damaging it whilst moving in your vehicle
- Remote mount is less likely to interfere with any airbag deployment zones e.g. knee or lower leg

SPECIFICATIONS:

- 3 year limited warranty
- Quick connect plug
- Power output control/manual override button
- Sync control
- LED indicator



BRAKE CONTROLLER SENTINEL (05350)

040752

Simple operation, slim design and a wide range of mounting options make it the perfect choice for today's towing vehicles. No moving parts or pendulums to adjust, it can be mounted in virtually any position.

FEATURES:

- Digital display, solid state, no moving parts, no hydraulic connections
- Compact size, mounts anywhere
- Advanced internal circuit protection to prevent damage if incorrectly wired
- No hydraulic connections
- No leveling required

SPECIFICATIONS:

- Includes mounting bracket, hardware and instructions
- For use on 12V negative ground systems only
- Smartclick compatibility offers plug and play functionality allowing a quick and easy connect to any Smartclick brake control body harness