

supex

SUPLEX.COM.AU



2026

CAMPING & CARAVANNING GEAR YOU CAN TRUST

ENJOY THE OUTDOORS WITH SUPEX

At Supex, we're here to make exploring the outdoors easier and more enjoyable for everyone, whether they're just getting started or are seasoned adventurers.

It's no secret that Aussies love the outdoors, whether it's road-tripping in their RV, overnight hiking, or the annual family trip camping at the beach. But sometimes, finding equipment you can trust, or knowing what you need, can be a struggle.

We take pride in the fact that so many outdoor experts choose and rely on our equipment. Their trust says a lot about our products' durability, performance and reliability. We're also about more than just great gear, we prioritise customer service and are committed to supporting our customers every step of the way.

Ultimately, it's the excitement and passion of our community that inspires us to keep innovating each day. And as we step into 2026, we're thrilled to continue serving and supporting our valued customers as they head out on their next adventure!

CONTENTS

RV ESSENTIALS & ACCESSORIES	4
CARAVAN AWNING & ACCESSORIES	20
ENSUITE	31
ELECTRICAL & 12V	34
RV & TRAILER HARDWARE	44
FURNITURE & BEDDING	50
COOKWARE	56
BEACH & SHELTER	62
LIGHTING & ACCESSORIES	66
MAINTENANCE & REPAIR	74
ROPES & PEGS	78
POLES & SPREADER BARS	86
INDEX	94



RV ESSENTIALS & ACCESSORIES

WHEEL RAMPS & CHOCKS



supex



SINGLE AXLE WHEEL LEVELLING RAMP SET

CODE: SRWLS

- To suit single axle vans
- Weight Rating: 5 tonnes
- Includes carry bag, two ramps, two chocks

Dimensions:
560mm (l) x 200mm (w) x 130mm (h)



DUAL AXLE WHEEL LEVELLING RAMP SET

CODE: SRWLD

- To suit dual axle vans
- Weight Rating: 5 tonnes
- Includes carry bag, two ramps, two chocks

Dimensions:
430mm (l) x 190mm (w) x 90mm (h)



WHEEL CHOCK

CODE: SRWWCH

- Wheel chock with rubber grip along base
- Australian made

Dimensions:
210mm (l) x 200mm (w) x 110mm (h)



DUAL AXLE WHEEL CHOCK

CODE: SRWWCHD

- Interlocking poly wheel chock for dual axle caravans
- Separable for single axle caravans
- Rubber grip along base

Dimensions (when interlocked):
450mm (l) x 209mm (w) x 119mm (h)



RV LEVEL BLOCK SET

CODE: SRWLCHB

- Eight piece set to customise ramp height to suit ground and vehicle
- Includes carry bag
- Includes six HDPE levels and two rubber tops
- Weight Rating: 3 tonnes

Dimensions (for one levelling block):
215mm (l) x 215mm (w) x 40mm (h)



NEW!

JOCKEY WHEEL BLOCK

CODE: SRW-JB6

- Provides 150mm lift
- Minimises lateral movement for stability
- Heavy-duty polypropylene
- Accommodates most standard jacks, jockey wheels, and corner stands
- Weight rating: 6 tonnes

Dimensions:
285mm (l) x 226mm (w) x 160mm (h)



STARTER PACKS

STANDARD STARTER PACK

CODE: SCSP

Contains:

- 1x 10m drinking water hose with fittings
- 1x 10m sullage hose, 25mm dia.
- 1x 10m, 15amp caravan lead
- 1x Drinking Water Hose storage bag
- 1x Sullage Hose storage bag
- 1x Electrical Lead bag

Comes in a reusable bag

✓ ADJUST PACK ITEMS TO YOUR REQUIREMENTS

✓ FULLY CUSTOMISABLE

✓ INCLUDE YOUR BRANDING



KIT INCLUDES



STARTER PACKS

DELUXE STARTER PACK

CODE: DCSP

Contains:

- 1x 10m drinking water hose with fittings
- 1x 10m sullage hose, 25mm dia.
- 1x 10m, 15amp caravan lead
- 1x Drinking Water Hose storage bag
- 1x Sullage Hose storage bag
- 1x Electrical Lead bag
- 1x T-level
- 1x Levelling ramp set

Comes in a reusable bag

✓ ADJUST PACK ITEMS TO YOUR REQUIREMENTS

✓ FULLY CUSTOMISABLE

✓ INCLUDE YOUR BRANDING



supex

KIT INCLUDES



CARAVAN HOSE



DRINKING WATER HOSE

CODE: DRW10 | 10m coil hose, fittings not inc.
 CODE: DRW20 | 20m coil hose, fittings not inc.
 CODE: DRW10HF | 10m coil hose, fittings inc. tap ready
 CODE: DRW20HF | 20m coil hose, fittings inc. tap ready

- Food grade drinking water hose, 12mm



DRINKING WATER HOSE, BLACK

CODE: DRW1230 | 12mm dia. x 30m coil
 CODE: DRW2530 | 25mm dia. x 30m coil

- Food grade drinking water hose, black
- Liquid transfer hose, non-pressure



SULLAGE HOSE

CODE: ISH2510 | 25mm dia. x 10m coil
 CODE: ISH285 | 28mm dia. x 5m coil
 CODE: ISH2810 | 28mm dia. x 10m coil
 CODE: ISH325 | 32mm dia. x 5m coil
 CODE: ISH3210 | 32mm dia. x 10m coil
 CODE: ISH385 | 38mm dia. x 5m coil
 CODE: ISH3810 | 38mm dia. x 10m coil

- For effective grey water drainage
- Smooth bore style reduces particle blockage
- Strong, flexible material prevents holes and leaks



EXTRA FLEXIBLE SULLAGE HOSE

CODE: SUL5F | 25mm dia. x 5m coil

- Interlockable extra flexible sullage hose
- With 40mm adaptor and interlockable threaded end to join two hoses together for 10m length
- Strong material prevents holes and leaks

HOSE FITTINGS



1. CODE: HC4035 | Hose repairer, 12mm
2. CODE: HC4011 | Sprinkler adaptor, 19mm BSP tail
3. CODE: HC4111 | Hose connector, 12mm
4. CODE: HC4018 | Tap nut adaptor, 19mm and 25mm
5. CODE: HCSETB | Brass 4 piece set; for 12mm hose
6. CODE: SH25NT | Nut & tail, 25mm
7. CODE: SH32NT | Nut & tail, 32mm
8. CODE: SH38NT | Nut & tail, 38mm

9. CODE: SH25J | Joiner, 25mm
10. CODE: SH32J | Joiner, 32mm
11. CODE: SH38J | Joiner, 38mm
12. CODE: SH1425D | Director, 14mm/25mm
13. CODE: SH25D | Director, 25mm
14. CODE: SH32D | Director, 32mm
15. CODE: SH38D | Director, 38mm
16. CODE: SH4020RN | Reducing nipple, 40mm/20mm
17. CODE: SH4025RN | Reducing nipple, 40mm/25mm

18. CODE: SH4032RN | Reducing nipple, 40mm/32mm
19. CODE: SH4020RB | Reducing bush, 40mm/20mm
20. CODE: SH4025RB | Reducing bush, 40mm/25mm
21. CODE: SH4032RB | Reducing bush, 40mm/32mm
22. CODE: HCATA | American thread adaptor, 1 1/16"
23. CODE: SHDC25 | Dust cap to suit 25mm tube
24. CODE: SHCAM | CAM fitting, fits 25mm - 38mm
25. CODE: SHCAMM | Male fitting to suit SHCAM

HOSE ACCESSORIES

WATER TANK FILLER

CODE: HOF-01

- Prevents air locks for smooth water flow
- Speeds up water tank filling
- Secures hose firmly in place
- Swivel fitting allows flexible movement
- Angled design for effortless use
- Fits all standard hose connections



NEW!

STORAGE BAGS



DRINKING WATER HOSE STORAGE BAG

CODE: SHB

- To suit up to 10m of drinking water hose

Dimensions: 340mm dia.



SULLAGE HOSE STORAGE BAG

CODE: LHB

- To suit up to 10m of sullage hose

Dimensions: 480mm dia.



ELECTRICAL LEAD STORAGE BAG

CODE: LB10

- To suit up to 20m of extension lead

Dimensions: 340mm dia.



STORAGE BAG SET

CODE: HB3PK

- Includes 1 x Drinking Water Hose Storage Bag, 1 x Sullage Hose Storage Bag and 1 x Electrical Lead Storage Bag

CARAVAN STEPS



PLASTIC FIXED CARAVAN STEP

CODE: STP2

- Durable plastic fixed step
- Weight Rating: 80kg

Dimensions:
345mm (d) x 500mm (w) x 230mm (h)



METAL CARAVAN STEP

CODE: STP3

- Metal frame with folding legs
- Non-slip tread
- Weight Rating: 150kg

Dimensions:
300mm (d) x 480mm (w) x 220mm (h)



METAL CARAVAN STEP, BLACK

CODE: STP3B

- Black metal frame with folding legs
- With luminous strip & non-slip tread
- Weight Rating: 150kg

Dimensions:
300mm (d) x 480mm (w) x 220mm (h)



HEAVY DUTY ADJUSTABLE STEP

CODE: STP4

- Heavy duty frame with folding legs
- Non-slip tread
- Four stage height adjustment, up to 220mm high
- Weight Rating: 300kg

Dimensions:
370mm (d) x 480mm (w) x 220mm (h)



TWO STAGE ALUMINIUM CARAVAN STEP

CODE: STP6

- Two stage step, folds flat for easy storage
- Weight Rating: 150kg

Dimensions:
225mm (d) x 350mm (w)
Overall Height: 380mm
Lower Step Height: 180mm



TWO STAGE ALUMINIUM CARAVAN STEP, BLACK

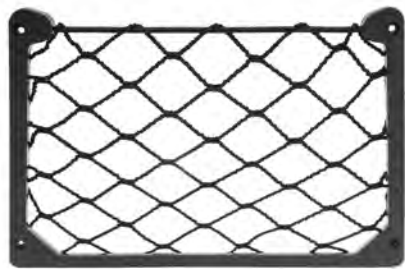
CODE: STP6B

- Black two stage step, folds flat for easy storage, with luminous strip
- Weight Rating: 150kg

Dimensions:
225mm (d) x 350mm (w)
Overall Height: 380mm
Lower Step Height: 180mm



CARAVAN ACCESSORIES



MAGAZINE HOLDER

CODE: MGZH

- Storage solution for magazines and books
- Fastens onto the back of RV shelving
- Plastic frame with 5mm dia. elastic rope
- Screws included

Dimensions:
355mm (w) x 185mm (h)



T-LEVEL

CODE: CL1

- Made from UV resistant high impact plastic
- Comes in a hang sell pack of 1

Dimensions:
60mm (l) x 45mm (w) x 15mm (d)



HANG SELL
AVAILABLE

CARAVAN SINK PLUG

CODE: SRCSP25 | Bulk

CODE: SRCSP25P | Hang Sell Pack of 1

- Made from soft rubber

Dimensions:
25mm dia.



CARAVAN WATER FILTER

CODE: SRCR20

- Portable caravan inline water filter with brass hose connectors for caravan or motor home
- Inhibits bacteria growth and removes unwanted taste, odours and chemicals

Specifications:
Rating: 1 micron
Dimensions: 70mm (dia.) x 300mm (h)
Connection: garden hose 1/2"
Min/max hose flow: 0 - 20 litres per min
Min/max temperature: 2° - 38°
Min/max pressure: 200 - 860 kPa



SINK HAND PUMP

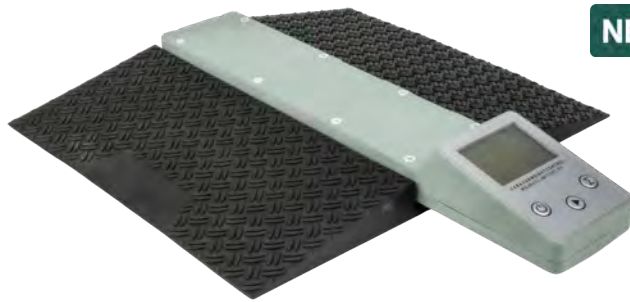
CODE: SHP1

- Double action manual pump
- Self priming, releases water at any time
- Manufactured from corrosion resistant nylon, polyurethane interior seals. anodised aluminium barrel
- Includes bonus repair kit

Specifications:
Pump extends 97mm above bench top
Spout extends 140mm from centreline of pump
Maximum bench thickness - 25mm
Bench top to hose fitting distance - 185mm



CARAVAN SCALES



NEW!

CARAVAN DIGITAL WEIGHT SCALES

CODE: CDWT-15

- Premium PA66 + 35% glass fibre weigh scales with ramp
 - Deviation within $\pm 2.5\%$
 - Five evenly distributed gravity sensors for highly accurate readings
 - Built-in 600 mAh rechargeable lithium battery with Type-C charging interface
 - IPX4 waterproof rating (suitable for outdoor conditions)
- Dimensions: Ramp: 300mm (w) x 260mm (d)
Scales: 70mm (w) x 360mm (l)

TOW BALL WEIGHT SCALES

CODE: TBWS-4

- Suits DO35, DO45, 50mm ball
- Measures from 0–400 kg with reliable precision
- Lightweight (2kg) yet durable, made from steel and reinforced nylon
- Maintains accuracy after 1,000+ uses
- Designed to match caravan coupling height, so there's no need for extra supports
- Comes with storage bag

Dimensions:
Base: 115mm dia.
Max width: 50mm dia.
580mm (h)



NEW!

CARAVAN STICKERS



NEW!

UHF CHANNEL STICKER

CODE: UHF40-STK

- Highly reflective material for superior visibility and safety
- Strong 3M adhesive backing
- Fully customisable to display any UHF channel or design as required

Dimensions: 300mm (w) x 100mm (h)



NEW!

DO NOT OVERTAKE TURNING VEHICLE STICKER

CODE: DNTV-STK

- Highly reflective for maximum visibility, day and night
 - Durable and moisture-resistant with long lasting adhesion even in harsh outdoor conditions
 - Class 1 reflective film
 - Complies with Australian Standard AS4001.1 for motor vehicles
- Dimensions: 300mm (w) x 100mm (h)

CARAVAN FRIDGE BARS



NEW!

CARAVAN FRIDGE BARS

CODE: DFRBB-S | Double | Small | Black | Adjustable length from 25cm - 43cm
CODE: DFRBB-L | Double | Large | Black | Adjustable length from 41cm - 71cm
CODE: SFRBB-L | Single | Large | Black | Adjustable length from 48cm - 80cm
CODE: FRBB-3S | 3 pack | Small | Black | Adjustable length from 41cm - 71cm

- Designed to fit most caravan and motorhome fridges
- Prevents items from shifting or falling out during travel
- Spring-loaded double-bar design allows quick installation and a snug, reliable fit



COLLAPSIBLE CONTAINERS & PREP



ROUND BOWL

CODE: CLP2

- Collapsible bowl for multi-purpose use

Dimensions: 380mm (dia.) x 160mm (h)
Collapsed height: 50mm



DOUBLE HANDLE COLANDER

CODE: CLP29 | Blue
CODE: CLP30 | Grey

- Collapsible design
- Dishwasher safe
- Can be used as a steamer, fits inside 1.5L collapsible saucepan

Dimensions: 200mm (dia.) x 85mm (h)
Collapsed height: 35mm



DISH DRAINER

CODE: CLP1

- Collapsible design
- Made from silicone and plastic

Dimensions: 315mm (d) x 365mm (w) x 125mm (h)
Collapsed height: 50mm



ROUND CONTAINERS, 4PK

CODE: CLP6

- Set of four collapsible round containers
- Dishwasher safe
- 100% food grade silicone, BPA-free, non-toxic and odourless
- FDA and LFGB approved

Collapsed height: 120mm stacked

400mL - 120mm (dia.) x 64mm (h)
600mL - 140mm (dia.) x 64mm (h)
880mL - 160mm (dia.) x 69mm (h)
1250mL - 190mm (dia.) x 74mm (h)



RECTANGLE CONTAINERS, 4PK

CODE: CLP12

- Set of four collapsible rectangle containers
- Dishwasher safe
- 100% food grade silicone, BPA-free, non-toxic and odourless
- FDA and LFGB approved

Collapsed height: 120mm stacked

350mL - 83mm (d) x 118mm (w) x 64mm (h)
540mL - 93mm (d) x 151mm (w) x 64mm (h)
800mL - 107mm (d) x 172mm (w) x 64mm (h)
1200mL - 122mm (d) x 210mm (w) x 74mm (h)



COLLAPSIBLE COOKWARE



KETTLE

CODE: CLP20

- Collapsible design
- Can be used on top of an electric, gas or induction cooker, stove or hob
- Heat-resistant plastic handles for ease of use
- 1.2L Capacity
- Food safe, BPA free, freezer safe and dishwasher safe
- This product is not microwave safe
- 430 Stainless steel, silicone and PA

Dimensions:

Open: 225mm (w) x 150mm (d) x 145mm (h)

Collapsed: 225mm (w) x 150mm (d) x 60mm (h)



NEW!

supex

WHISTLING KETTLE

CODE: CLPKTL-2L

- Collapsible design
- Whistling spout alerts when water is boiling
- Can be used on top of an electric, induction or gas cooker, stove or hob
- Heat-resistant plastic handles for ease of use
- 2L Capacity
- Food safe, BPA free, freezer safe and dishwasher safe
- This product is not microwave safe

Dimensions:

Open: 185mm dia. x 200mm (h) (open) / 140mm (h) (collapsed)



SAUCEPAN

- CODE: CLP13 | Blue, 1L. 160mm (dia.) x 90mm (h)
 CODE: CLP14 | Blue, 1.5L. 200mm (dia.) x 85mm (h)
 CODE: CLP15 | Blue, 3L. 240mm (dia.) x 125mm (h)
 CODE: CLP16 | Grey, 1L. 160mm (dia.) x 90mm (h)
 CODE: CLP17 | Grey, 1.5L. 200mm (dia.) x 85mm (h)
 CODE: CLP18 | Grey, 3L. 240mm (dia.) x 125mm (h)

- Collapsible, dishwasher safe saucepan for use on stovetop, hob or cooker with anti-slip lid edge design
- Made from stainless steel, silicone and glass
- Collapsed height: 50mm
- Not suitable for induction cooktops



FRYPAN

CODE: CLP32

- Collapsible frying pan for use on stovetop, hob or cooker
 - Non-stick stainless steel surface with folding handle
 - Collapsed height: 58mm
 - Not suitable for induction cooktops
- Dimensions: 240mm (dia.) x 85mm (h)



COLLAPSIBLE TUBS & BASKETS



RECTANGLE DISH

CODE: CLP3

- Collapsible design

Dimensions:
270mm (d) x 370mm (w) x 120mm (h)
Collapsed height: 50mm



RECTANGLE DISH WITH HANDLES

CODE: CLP9

- Collapsible design

Dimensions:
285mm (d) x 380mm (w) x 140mm (h)
Collapsed height: 50mm



BUCKET

CODE: CLP4

- Collapsible design

Dimensions:
330mm (dia.) x 250mm (h)
Collapsed height: 50mm



WASH TUB / SINK

CODE: CLP7

- Collapsible design

- With draining hole

Dimensions:
300mm (d) x 320mm (w) x 175mm (h)
Collapsed height: 50mm



SMALL BASKET

CODE: CLP8

- Collapsible design

Dimensions:
375mm (d) x 500mm (w) x 205mm (h)
Collapsed height: 60mm



LARGE BASKET

CODE: CLP28

- Collapsible design

Dimensions:
460mm (d) x 610mm (w) x 270mm (h)
Collapsed height: 85mm



NEW!



TRASH BIN WITH LID

CODE: CLP55

- 8.5L rubbish bin designed for small spaces and easy storage

- Collapsible design

Dimensions: Unfolded: 275mm (w) x 185mm (d) x 290mm (h)
Collapsed: 275mm (w) x 105mm (d) x 290mm (h)



POLE CARRIERS

POLE CARRIER

CODE: PC160 | 150mm (dia.) x 1.60m (l) | White
 CODE: PC180 | 150mm (dia.) x 1.80m (l) | White
 CODE: PC200 | 150mm (dia.) x 2.00m (l) | White
 CODE: PC220 | 150mm (dia.) x 2.20m (l) | White
 CODE: PC160B | 150mm (dia.) x 1.60m (l) | Black
 CODE: PC180B | 150mm (dia.) x 1.80m (l) | Black
 CODE: PC200B | 150mm (dia.) x 2.00m (l) | Black
 CODE: PC220B | 150mm (dia.) x 2.20m (l) | Black

- Heavy duty pole holder for tent poles, anti-flap kits and fishing rods
- Easily lockable on both ends; remove the Quik clips and add padlocks
- Can be fitted to caravan chassis or vehicle roof rack
- Mounting brackets included
- White pole carrier made from UPVC
- Black pole carrier made from HDPE
- Four sizes and two colours available



supex

ALUMINIUM SQUARE POLE CARRIER

CODE: PC150SB | 150mm (h) x 150mm (w) x 1.50m (l)
 CODE: PC175SB | 150mm (h) x 150mm (w) x 1.75m (l)
 CODE: PC200SB | 150mm (h) x 150mm (w) x 2.00m (l)

- Box-style aluminium pole carrier
- Releasing clips at both ends, allowing access on either side
- Black anodised aluminium material with cushioned nylon caps
- Side flanges either side for mounting
- Includes mounting brackets (5mm stainless steel plate) and screws



NEW!



MOUNTING BRACKETS

CODE: PCMBS

- Bolt on mounting brackets for pole carrier
- Suitable for up to 150mm chassis of caravan or camper trailer
- Suits 150mm dia. pole carrier
- Made from zinc plated steel
- Sold as a pair



ANNEXE MATTING

PVC FOAM CARPET

CODE: FC1B | 2.50m x 30m roll | Blue

CODE: FC3B | 2.50m X 3.00m | Blue

CODE: FC4B | 2.50m X 4.00m | Blue

CODE: FC5B | 2.50m X 5.00m | Blue

CODE: FC6B | 2.50m X 6.00m | Blue

CODE: FC3GN | 2.50m X 3.00m | Green

CODE: FC3X3GN | 3.00m X 3.00m | Green | Suits 3m x 3m gazebo

CODE: FC4GN | 2.50m X 4.00m | Green

CODE: FC5GN | 2.50m X 5.00m | Green

CODE: FC6GN | 2.50m X 6.00m | Green

CODE: FC1GY | 2.50m x 30m roll | Grey

CODE: FC3GY | 2.50m X 3.00m | Grey

CODE: FC4GY | 2.50m X 4.00m | Grey

CODE: FC5GY | 2.50m X 5.00m | Grey

CODE: FC6GY | 2.50m X 6.00m | Grey

- Premium quality, heavy duty PVC foam carpet
- Low maintenance; shake and wipe clean
- Water, dirt & sand draining
- UV treated, lightweight & soft to touch
- Breatheable 550GSM PVC foam
- Includes carry bag



MESH GROUND MATTING

CODE: MGM8X8 | 8ft (w) x 8ft (l) | 2.40m (w) x 2.40m (l)

CODE: MGM10X10 | 10ft (w) x 10ft (l) | 3.00m (w) x 3.00m (l)

CODE: MGM10X20 | 10ft (w) x 20ft (l) | 3.00m (w) x 6.00m (l)

CODE: MGM12X12 | 12ft (w) x 12ft (l) | 3.70m (w) x 3.70m (l)

- Mesh-style matting allows the grass underneath to breathe whilst providing protection underfoot
- Reinforced with eyelets at 80cm intervals
- Can be used for under-tent floor saver
- UV stabilised
- Manufactured from 180GSM shadedcloth
- Includes carry bag



CLOTHES AIRERS

EASY HANG CLOTHESLINE

CODE: CLSS8 To suit 8' awning	CODE: CLSS17 To suit 17' awning
CODE: CLSS9 To suit 9' awning	CODE: CLSS18 To suit 18' awning
CODE: CLSS10 To suit 10' awning	CODE: CLSS19 To suit 19' awning
CODE: CLSS11 To suit 11' awning	CODE: CLSS20 To suit 20' awning
CODE: CLSS12 To suit 12' awning	CODE: CLSS21 To suit 21' awning
CODE: CLSS13 To suit 13' awning	CODE: CLSS22 To suit 22' awning
CODE: CLSS14 To suit 14' awning	CODE: CLSS23 To suit 23' awning
CODE: CLSS15 To suit 15' awning	CODE: CLSS24 To suit 24' awning
CODE: CLSS16 To suit 16' awning	CODE: CLSS25 To suit 25' awning

- Stainless steel easy hang clothesline
- Includes one line per pack

FOLDING CLOTHES AIRER

CODE: CD2

- Strong, lightweight aluminium frame with tri-leg design for maximum stability
- Collapsible for easy transportation
- Includes carry bag and ground pegs
- Matte black finish

Dimensions:

Diagonal: 150cm x 150cm (w)

Legs: 96cm (w) / Assembled: 140cm - 145cm (h)

WALL MOUNTED DRYING RACK

CODE: CWMDR-100-B

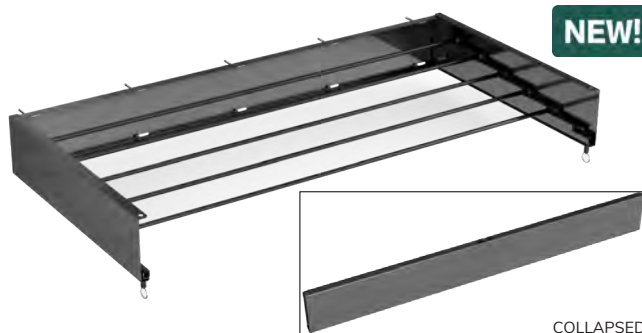
- Black fold-out drying rack for caravans and RVs, designed to extend smoothly
 - Lightweight aluminium material and compact design that provides drying space
 - Includes drill bit, screws and wall plugs
- Dimensions: 1000mm (l) x 110mm (w) x 25mm (d)
 Extended Length: 500mm
 Weight: 2kg
 Rod Count: 6 rods
 Maximum Load: 18kg



supex



NEW!



NEW!

COLLAPSED





CARAVAN AWNING & ACCESSORIES

CURVED ROOF RAFTERS

POWDERCOATED ALUMINIUM CURVED ROOF RAFTER

WHITE:

CODE: 563V | Slight curve, max. length: 243cm (8ft)

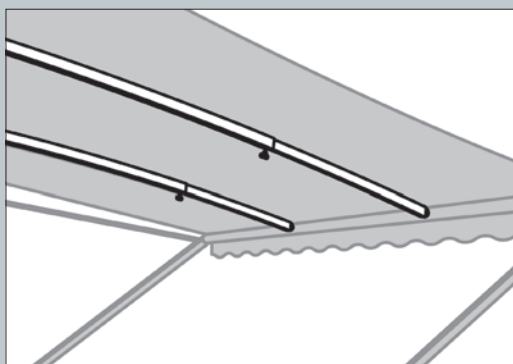
CODE: 563VA | Acute curve, max. length: 243cm (8ft)

BLACK:

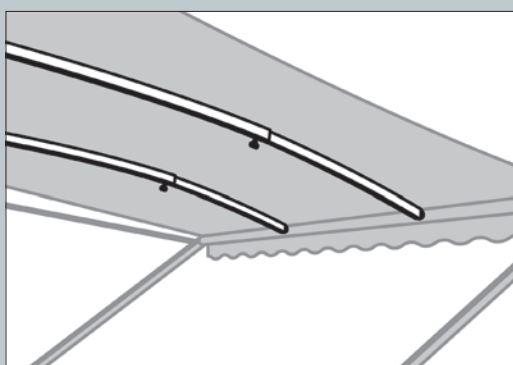
CODE: 563VB | Slight curve, max. length: 243cm (8ft)

CODE: 563VAB | Acute curve, max. length: 243cm (8ft)

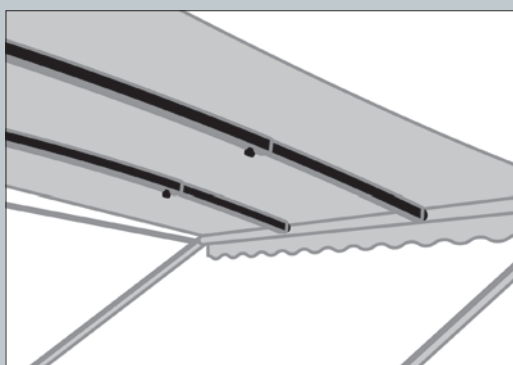
supex



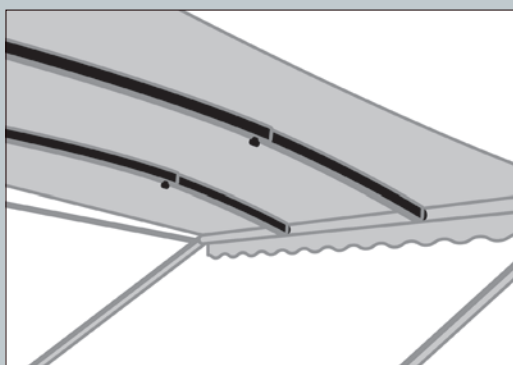
SLIGHT CURVE, WHITE



ACUTE CURVE, WHITE



SLIGHT CURVE, BLACK



ACUTE CURVE, BLACK



SECURA BARS (ANTI-FLAP KITS)

SECURA BAR KITS (ANTI-FLAP KITS)

WHITE:

CODE: ASWS | Small, Extendable Length: 210cm - 220cm

CODE: ASWM | Medium, Extendable Length: 220cm - 230cm

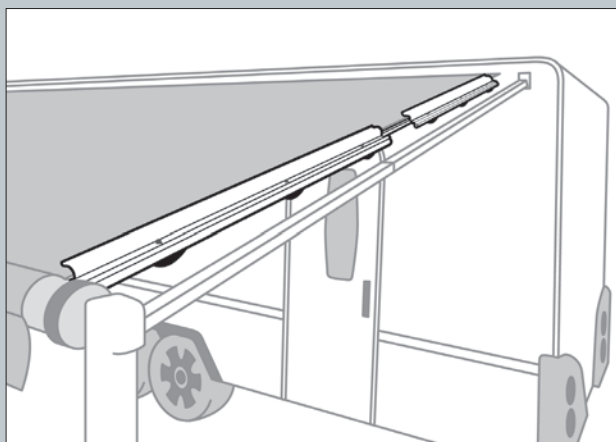
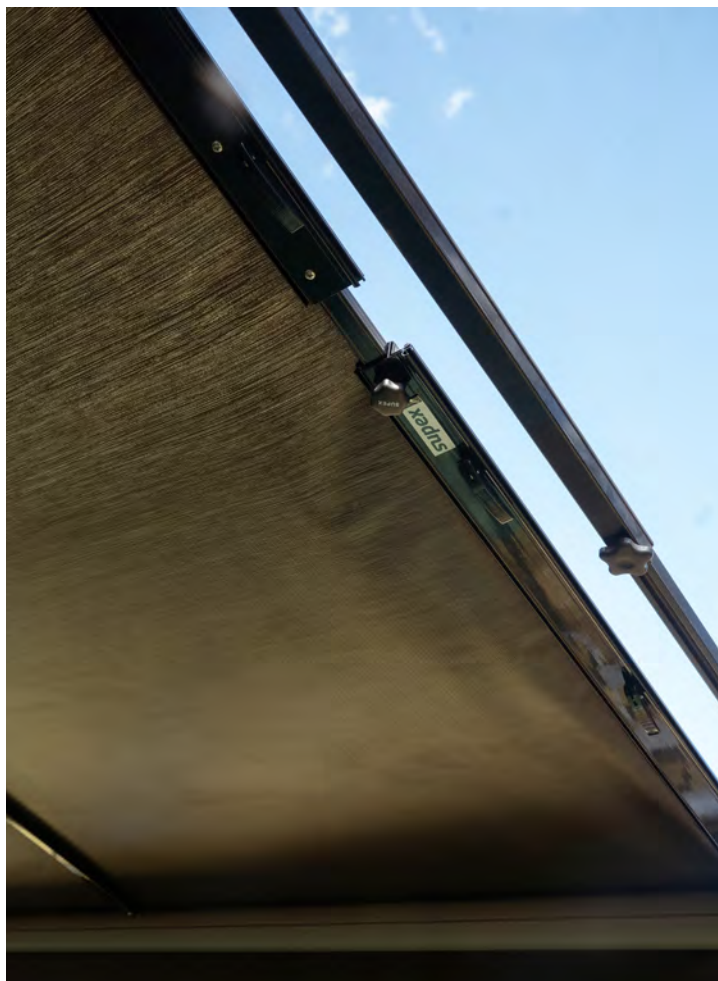
CODE: ASWL | Large, Extendable Length: 230cm - 240cm

BLACK:

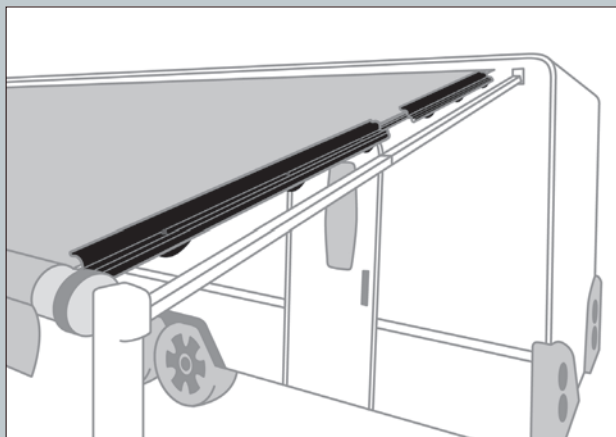
CODE: ASBS | Small, Extendable Length: 210cm - 220cm

CODE: ASBM | Medium, Extendable Length: 220cm - 230cm

CODE: ASBL | Large, Extendable Length: 230cm - 240cm



SECURA BAR, WHITE



SECURA BAR, BLACK



STORAGE BAG

NEW!



Supex

SECURA BAR AND CURVED ROOF RAFTER STORAGE BAG

CODE: ASCB

- Six pockets to fit 1x Secura Bar anti-flap kit set and up to 4x Curved Roof Rafters
- Manufactured from polypropylene

Dimensions:
1900mm (l) x 820mm (w)

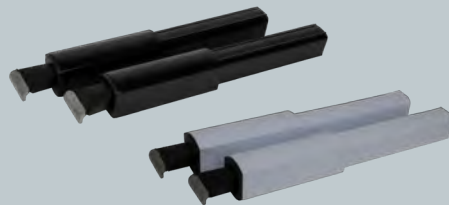
CURVED ROOF RAFTER & SECURA BAR SPARE PARTS



CURVED ROOF RAFTER END

CODE: 563RE

- Stainless steel roof rafter end
- Also suits Supex Secura Bar



SECURA BAR EXTENSION

CODE: ASEW | White | Set of 2
CODE: ASEB | Black | Set of 2

- Extend Secura Bar to be usable on box and cassette style awnings
- Dimensions: 100mm (l)



SECURA BAR TURNING KNOB

CODE: ASTK

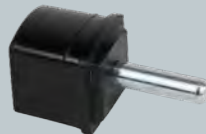
- Replacement turning knob to suit Supex Secura Bar



CURVED ROOF RAFTER SPIGOT END

CODE: 563SP

- Steel spigot end, moulded black plastic base



SECURA BAR SPIGOT END

CODE: ASSP

- Steel spigot end to suit Supex Secura Bar



SECURA BAR HANDLE

CODE: ASHA

- Plastic handle assembly to tighten Supex Secura Bar



AWNING ADAPTOR BRACKET

CODE: 38T

- Adaptor bracket to attach Secura Bar or Curved Roof Rafter to box / cassette style awning
- Attach bracket to lead rail of awning with screws or rivets

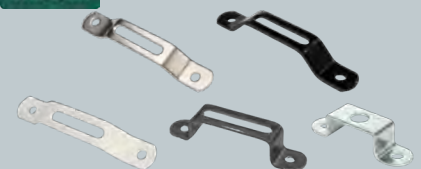


CURVED ROOF RAFTER TURNING KNOB

CODE: 563TS

- Black plastic turning knob
- To suit Curved Roof Rafter

HANG SELL AVAILABLE



ROOF RAIL BRACKETS

- CODE: 38MS | Bulk | S / steel
CODE: 38MSP | Hang Sell Pack of 2
CODE: 38MSW | Bulk | White powder coated S / steel
CODE: 38MSWP | Hang Sell Pack of 2
CODE: 38MSB | Bulk | Black powder coated S / steel
CODE: 38MSBP | Hang Sell Pack of 2
CODE: 38MSS | Bulk | S / steel replacement
CODE: 38MSJ | Bulk | Replacement for Jayco vans
- Backing plate included

CARAVAN AWNING ACCESSORIES



LARGE CARAVAN AWNING TENSIONER

CODE: SRDF1

- Suits most caravan and pop top style awning systems
 - Pack includes: 1x tensioner, 1x 600mm strap, 1x 300mm strap
- Dimensions: 50mm (d) x 200mm (w)



AWNING BRACKET

CODE: 38AB

- Pole clip for roll out awnings
 - Suits Carefree, A&E & Dometic awnings; doesn't suit Fiamma awnings
- Dimensions: 38mm x 40mm (10mm dia slot for tent poles, 8mm dia. round rod)



CARAVAN AWNING SAFETY STRAPS

CODE: CASS

- Heavy duty hook & loop safety straps for securing awning arms
 - UV stabilised and chemical resistant material
- Dimensions: Pack includes 2x straps. 340mm (l) x 50mm (w)



AWNING ROPE CLIPS

CODE: ARC

- Caravan awning rope clips to fit most Dometic (A&E), Carefree and Aussie Traveller awnings
- Stainless steel
- Hang sell pack of two, available to buy in bulk

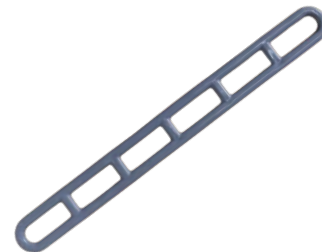


AWNING CENTRE SUPPORT CRADLE

CODE: WACS | White

CODE: BACS | Black

- Support the centre weight of any roll out awning whilst travelling
- Box includes: 1x back panel, 1x arm, 1x cradle support, 1x screw set



RUBBER LADDER STRAP

CODE: ANLADD

- Makes tying down annexes easy
 - Multiple 'steps' in ladder allow for varying tie-down positions
- Dimensions: 225mm (l) x 22mm (w)



POP TOP SUPPORT BARS

CODE: PTS | 22-25mm dia. x 1.2wt white finish | Extends to 50cm

CODE: PTS2 | 22-25mm dia. x 1.2wt white finish | Extends to 60cm

CODE: PTSJ | 22mm dia. x 1200mm (l) | To suit Jayco van

POP TOP DISPLAY BOX



POP TOP SUPPORT DISPLAY BOX

CODE: PTSDB

- Cardboard display box
- Includes 14x PTS

AWNING ROPE KITS



HANG SELL AVAILABLE

12V AWNING ROPE CRADLE

CODE: ARCV | Bulk
CODE: ARVCP | Hang Sell Pack of 2

- Awning rope cradles to suit Carefree 12V roll out awning



NEW!

AWNING ROPE CLIP PACK

CODE: ARCPK

- Basic awning set up rope clip pack

Contains: 2x guy ropes, 2x awning rope clips, 2x hard ground screw-in pegs (glow-in-the-dark), 1x screw-in peg drill adaptor



NEW!

12V AWNING ROPE CRADLE BOX PACK

CODE: ARCVBP

- Basic set up cradle pack to suit Carefree 12V roll out awning

Contains: 2x cradles, 2x ground plates, 2x guy ropes, 6x hard ground screw-in pegs (glow-in-the-dark), 1x screw-in peg drill adaptor

supex



NEW!

12V AWNING ROPE CRADLE POLE PACK, WHITE

CODE: ARCVPP

- Complete set cradle pack to suit Carefree 12V roll out awning
Contains: 2x cradles, 2x large bow mounts, 2x guy ropes, 6x hard ground screw-in pegs (glow-in-the-dark), 1x screw-in peg drill adaptor, 2x white 9ft aluminium poles



NEW!

12V AWNING ROPE CRADLE POLE PACK, BLACK

CODE: ARCVPPB

- Complete set cradle pack to suit Carefree 12V roll out awning
Contains: 2x cradles, 2x large bow mounts, 2x guy ropes, 6x hard ground screw-in pegs (glow-in-the-dark), 1x screw-in peg drill adaptor, 2x black 9ft aluminium poles



NEW!

12V AWNING ROPE CRADLE POLE PACK, GREY

CODE: ARCVPPG

- Complete set cradle pack to suit Carefree 12V roll out awning
Contains: 2x cradles, 2x large bow mounts, 2x guy ropes, 6x hard ground screw-in pegs (glow-in-the-dark), 1x screw-in peg drill adaptor, 2x grey 9ft aluminium poles



CARAVAN AWNING TIE DOWNS



VERSATILE SAIL TRACK LOOPS

CODE: VSTL

- Designed for multiple purposes, hangers for camp essentials or as tie-downs to add tension to the awning
- Works with most caravan/4WD awnings
- Includes carabiners

Dimensions: Pack of 2. Each sail track has 5mm and 7mm splines and is 215mm (l)



AWNING TIE DOWN STRAP KIT

CODE: PATDK

- Universal fit that securely attaches in 5mm and 7mm splines, or D-ring wrapped around awning barrel
- 38mm wide webbing, reinforced powder-coated steel springs, stainless steel eyelets, metal cam buckles
- Two hi-visibility reflective patches
- 50kg load rating capacity

Dimensions: Pack of 2. Each strap is 270cm (l) x 38mm (w)



AWNING PULL STRAP REPLACEMENT

CODE: APSR

- Fits most standard rollout awnings
- 6mm sturdy rope spline for strength and durability
- Reliable, long-lasting construction
- Black material

Dimensions: Pack of 1. Each strap is 2.45m (l) x 25mm (w)



LONG WALL PRIVACY SCREENS

LONG WALL PRIVACY SCREEN, GREY

CODE: SRPS28 | 2.80m (l) x 1.80m (h) | Suits 10' awning
 CODE: SRPS34 | 3.40m (l) x 1.80m (h) | Suits 12' awning
 CODE: SRPS37 | 3.70m (l) x 1.80m (h) | Suits 13' awning
 CODE: SRPS40 | 4.00m (l) x 1.80m (h) | Suits 14' awning
 CODE: SRPS42 | 4.26m (l) x 1.80m (h) | Suits 15' awning
 CODE: SRPS46 | 4.60m (l) x 1.80m (h) | Suits 16' awning
 CODE: SRPS48 | 4.87m (l) x 1.80m (h) | Suits 17' awning
 CODE: SRPS52 | 5.20m (l) x 1.80m (h) | Suits 18' awning
 CODE: SRPS55 | 5.50m (l) x 1.80m (h) | Suits 19' awning

- Long wall privacy screen made to suit the Australian environment
- Shade rating: 95%, made from 199GSM fabric
- Four year warranty
- Includes guy ropes, tent pegs and D-rings
- 6mm spline



supex

LONG WALL PRIVACY SCREEN, BLACK

CODE: SRPS28B | 2.80m (l) x 1.80m (h) | Suits 10' awning
 CODE: SRPS34B | 3.40m (l) x 1.80m (h) | Suits 12' awning
 CODE: SRPS37B | 3.70m (l) x 1.80m (h) | Suits 13' awning
 CODE: SRPS40B | 4.00m (l) x 1.80m (h) | Suits 14' awning
 CODE: SRPS42B | 4.26m (l) x 1.80m (h) | Suits 15' awning
 CODE: SRPS46B | 4.60m (l) x 1.80m (h) | Suits 16' awning
 CODE: SRPS48B | 4.87m (l) x 1.80m (h) | Suits 17' awning
 CODE: SRPS52B | 5.20m (l) x 1.80m (h) | Suits 18' awning
 CODE: SRPS55B | 5.50m (l) x 1.80m (h) | Suits 19' awning

- Long wall privacy screen made to suit the Australian environment
- Shade rating: 95%, made from 199GSM fabric
- Four year warranty
- Includes guy ropes, tent pegs and D-rings
- 6mm spline



LONG WALL PRIVACY SCREEN, BONUS DROP

CODE: SRPSBD37 | 3.70m (l) x 1.95m (h) | Suits 13' awning
 CODE: SRPSBD40 | 4.00m (l) x 1.95m (h) | Suits 14' awning
 CODE: SRPSBD42 | 4.26m (l) x 1.95m (h) | Suits 15' awning
 CODE: SRPSBD46 | 4.60m (l) x 1.95m (h) | Suits 16' awning
 CODE: SRPSBD48 | 4.87m (l) x 1.95m (h) | Suits 17' awning
 CODE: SRPSBD52 | 5.20m (l) x 1.95m (h) | Suits 18' awning
 CODE: SRPSBD55 | 5.50m (l) x 1.95m (h) | Suits 19' awning

- Bonus drop side wall privacy screen to suit off road caravans
- Shade rating: 95%, made from 199GSM fabric
- Four year warranty
- Includes guy ropes, tent pegs & D-rings
- 6mm spline



END WALL PRIVACY SCREENS

END WALL CARAVAN PRIVACY SCREEN, GREY

CODE: CAEPS | 1.9m (w) x 2.3m (high end) x 2.1m (low end)

- End wall privacy screen
- Attach to your awning arms with hook & loop strap or thread spline along Secura Bar
- 4 year warranty
- Shade rating: 95%, made from 199GSM fabric
- Includes guy ropes, tent pegs and D-rings
- 6mm spline



END WALL CARAVAN PRIVACY SCREEN, BLACK

CODE: CAEPSB | 1.9m (w) x 2.3m (high end) x 2.1m (low end)

- End wall privacy screen
- Attach to your awning arms with hook & loop strap or thread spline along Secura Bar
- 4 year warranty
- Shade rating: 95%, made from 199GSM fabric
- Includes guy ropes, tent pegs and D-rings
- 6mm spline



END WALL CARAVAN PRIVACY SCREEN, BONUS DROP

CODE: CAEPSBD | 2.0m (w) x 2.5m (high) x 2.1m (low)

- End wall privacy screen with bonus drop to suit offroad caravans
- Attach to your awning arms with hook & loop strap or thread spline along Secura Bar
- 4 year warranty
- Shade rating: 95%, made from 199GSM fabric
- Includes guy ropes, tent pegs and D-rings
- 6mm spline

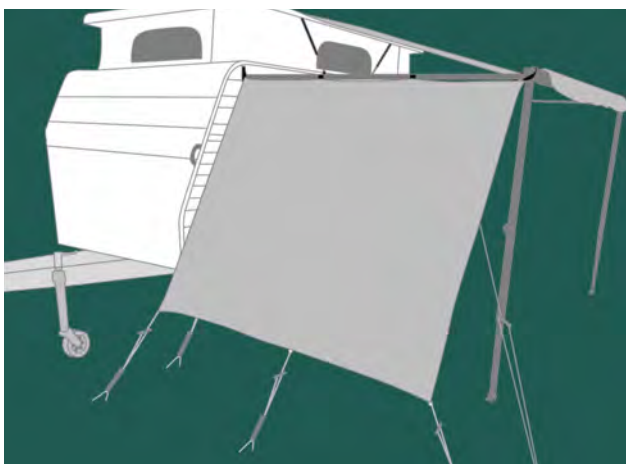


END WALL CARAVAN PRIVACY SCREEN, FOR POP TOP VAN

CODE: PTAEPS | Grey | 2.05m (w) x 1.85m (h)

CODE: PTAEPSB | Black | 2.05m (w) x 1.85m (h)

- Shade rating: 95%
- Attach to your awning arms with hook & loop strap
- Manufactured from 199GSM fabric
- Four year warranty
- Includes guy ropes, tent pegs & D-rings



AWNING EXTENSION SCREENS

AWNING PORCH EXTENSION KIT

CODE: W5000P

- Extends awning area by 1.55m, with a drop of 1.8m
- Attach to your awning arms with hook & loop strap or thread spline along Secura Bar
- Kit includes: 1x extension screen, 1x carry bag, 2x three-piece upright poles, 1x spreader pole, 3x tent pegs and tie-down rope
- Velcro straps and Kedar splines run along top, easily attach privacy screen to awning arms
- 560gsm material (PVC vinyl 220gsm HDPE)
- Includes guy ropes, tent pegs and tent poles
- 6mm spline

Dimensions: 2100mm (w) x 1800mm (drop) x 1550mm (extension)



supex

FIAMMA AWNING PRIVACY SCREENS

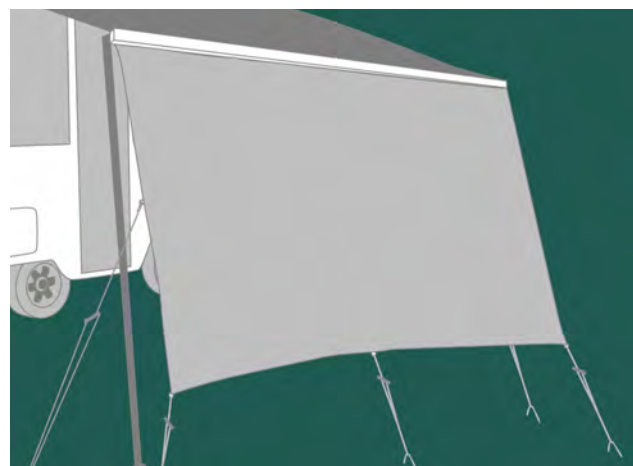
FIAMMA AWNING PRIVACY SCREEN LONG WALL

CODE: SRPSF28 | 2.85m (l) x 1.80m (h) | Suits 3.0m F45 awning

CODE: SRPSF33 | 3.35m (l) x 1.80m (h) | Suits 3.5m F45 awning

CODE: SRPSF38 | 3.85m (l) x 1.80m (h) | Suits 4.0m F45 awning

- 4mm spline to suit Fiamma awnings



FIAMMA AWNING PRIVACY SCREEN END WALL

CODE: CAEPSF | Suits Fiamma F45 awning

- 4mm spline to suit Fiamma awnings



PRIVACY SCREEN ACCESSORIES

TIE DOWN KIT

CODE: CAM1

- Quickly and easily fasten privacy screens
 - Provides tension
 - For tarps, tents and more
- Pack includes 5x bungee cords and 5x tent pegs

Tent Peg Dimensions: 6.3mm (dia.) x 225mm (h)





ENSUITE

TOILET CHEMICAL SACHETS



PORTA PAK FRESH SCENT

CODE: WL1

- Powerful odor control
- Biodegradable & formaldehyde free
- Pack of 15 sachets



PORTA PAK LAVENDAR BREEZE

CODE: WL2

- Powerful odor control
- Biodegradable & formaldehyde free
- Pack of 15 sachets



PORTA PAK CLEAN LINEN

CODE: WL8

- Powerful odor control
- Biodegradable & formaldehyde free
- Pack of 15 sachets

NEW!

supex



BIO PAK OCEAN MIST

CODE: WL7

- Controls foul smells with powerful odor-targeting enzymes
- Cleans sensors and lubricates tank components
- Septic-safe and 100% biodegradable
- Pack of 15 sachets



BIO PAK ALPINE FRESH

CODE: WL3

- Controls foul smells with powerful odor-targeting enzymes
- Cleans sensors and lubricates tank components
- Septic-safe and 100% biodegradable
- Pack of 15 sachets



WALEX ELEMONATE

CODE: WL6

- Cleans sensors inside grey tank
- Dissolves rapidly
- Biodegradable & formaldehyde free
- Pack of 5 sachets



WALEX COMMANDO

CODE: WL5

- Lubricates valves & seals
- Septic tank safe, dissolvable packet
- Formaldehyde free & eco-friendly
- Pack of 4 sachets



TOILET CHEMICAL LIQUID

CAMP BLUE LIQUID

CODE: STCB | 2.5L
CODE: STCB1L | 1L

- High concentrate toilet liquid
- For use in the waste tank of all chemical toilets
- Prevents gas build up
- Eliminates unpleasant odours and leaves a fresh scent
- Dilution rate of 100ml per 20 litres of waste tank capacity
- Made in the Netherlands



CAMP FLUSH LIQUID

CODE: STCF | 2.5L
CODE: STCF1L | 1L

- Pleasant smelling toilet break down liquid
- For use in the flush tank of all chemical toilets,
- Environmentally safe & biodegradable
- Protects and lubricates toilet seals
- Helps prevent scaling
- Dilution rate of 80ml per 15 litres of fresh water
- Made in the Netherlands



CAMP GREEN LIQUID

CODE: STCG | 2.5L
CODE: STCG1L | 1L

- High concentrate toilet liquid
- For use in the waste tank of all chemical toilets
- Environmentally safe & biodegradable
- Prevents gas build up
- Eliminates unpleasant odours and leaves a fresh scent
- Dilution rate of 100ml per 20 litres of waste tank capacity
- Made in the Netherlands



ENSUITE ACCESSORIES & CLEANING

CAMP SOFT TOILET PAPER

CODE: STICS

- Rapidly dissolving toilet paper
- For all types of portable toilets
- Pack of 4 rolls



supex

WATER TANK CLEANER

CODE: SWC

- Environmentally friendly concentrate for caravan pipes and water tanks
- Cleans limescale and deposits
- Contains 500mL



CASSETTE TANK CLEANER

CODE: SCTC

- High concentrate cleaning liquid
- For use in the waste tank of chemical and/or portable toilets
- Contains 1L





ELECTRICAL & 12V

ANODES

MAGNESIUM ANODE

CODE: AND1 | BULK
CODE: AND1P | Hang Sell Pack of 1

- Magnesium caravan hot water service replacement anode

Dimensions: 21mm dia. x 300mm (l)



HANG SELL
AVAILABLE

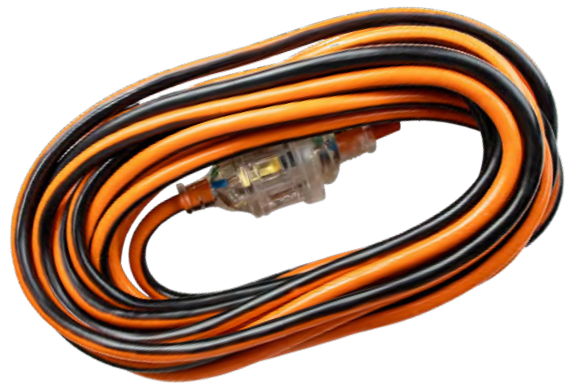
supex

ELECTRICAL ACCESSORIES

ELECTRICAL LEADS

CODE: EL10 | 10m length
CODE: EL15 | 15m length
CODE: EL20 | 20m length

- Heavy duty caravan extension lead, 15amp plug



15A TO 10A CARAVAN POWER ADAPTOR

CODE: PA1510-RCD

- RCD overload protection and inbuilt circuit breaker
- IP55 weather and dustproof rating
- Clear lid for inspection
- Cord clamp for secure connection
- Hanging hook for convenient storage
- Suitable for standard 15A leads



NEW!

SPECIFICATIONS

- Voltage: 240V
- Current: 10A
- Power: 2400W
- Lead length: 1.5m
- Weight: 1kg

Dimensions:
98mm (w) x 98mm (h) x 360mm (l)



CARAVAN FANS

12V/24V CARAVAN INTERIOR FAN

CODE: SCF12-W | White

CODE: SCF12-B | Black

- Remote control or manual control
- Light display to show fan speed and time functions
- Minimal noise and low amp draw
- 180 degrees swivel head design with locking tab
- 360 degrees airflow
- Three fan speeds: low, medium & high
- Four preset timer settings: 3,6,9 & 12 hours
- DB rating: max approx. 60db, min approx. 48db
- Weight: 700g

Dimensions: 350mm (h) x 250mm (w) x 95mm (d)



SPECIFICATIONS

FAN SPEED	AMP DRAW		RPM
	12 VOLT	24 VOLT	12 & 24 VOLT
LOW	0.15	0.10	1200±100
MEDIUM	0.22	0.15	1500±100
HIGH	0.31	0.23	1800±100



INTERIOR READING LIGHTS



60MM CARAVAN READING LIGHT

CODE: BCRL1

- Matte black finish with frosted glass
- Dimmable touch switch
- Swivel joint
- Cool white light mode

Specifications:
10-15V DC, LED, 2W, 6000K
Max Amp draw 0.2A

Dimensions:
60mm dia. base



60MM CARAVAN READING LIGHT

CODE: BCRL2

- Matte black finish
- Rocker switch
- Swivel joint
- Cool white light mode

Specifications:
10 - 15V DC, LED, 2W, 6000K
USB - C 5V 2.1 A
Max Amp draw 0.2A
Dimensions:
60mm dia. base



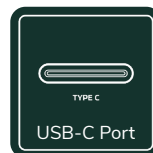
60MM CARAVAN READING LIGHT

CODE: BCRL3

- Matte black finish
- Rocker switch
- Swivel joint
- Cool white light mode

Specifications:
10-15V DC, LED, 2W, 6000K
Max Amp draw 0.2A

Dimensions:
60mm dia. base



60MM CARAVAN READING LIGHT

CODE: BCRL5

- Matte black finish
- Flexible silicone arm
- Touch switch
- Blue night light and cool white light mode

Specifications:
10 - 15V DC, SMD LED, 2W,
6000K, USB - C, 5V, 2.1 A
Max Amp draw 0.2A
Dimensions:
60mm dia. base

NEW!



45MM CARAVAN READING LIGHT

CODE: BCRL4

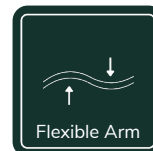
- Brass finish
- Dimmable touch switch
- Swivel joint
- Daylight light mode

Specifications:
10-15V DC, LED, 2W, 6000K
Max Amp draw 0.2A
Dimensions:
Base: 45mm dia. x 6.5mm (h)
Light: 27mm dia. x 80mm (l)



supex

INTERIOR LIGHTING - DELUXE



FAUX TIMBER READING LIGHT

CODE: SFL1

- Faux timber finish
- Extra long flexible silicone arm
- Dimmable touch switch
- Cool white light mode (dimmable when switch is pressed continuously)
- Blue night light mode

Specifications:
10-15V DC, SMD LED, 2W (0.2W for night light), 6000K
USB-C 5V 2.1A
Max Amp draw 0.2A

Dimensions:
60mm dia. base
Flexible arm length: 285mm

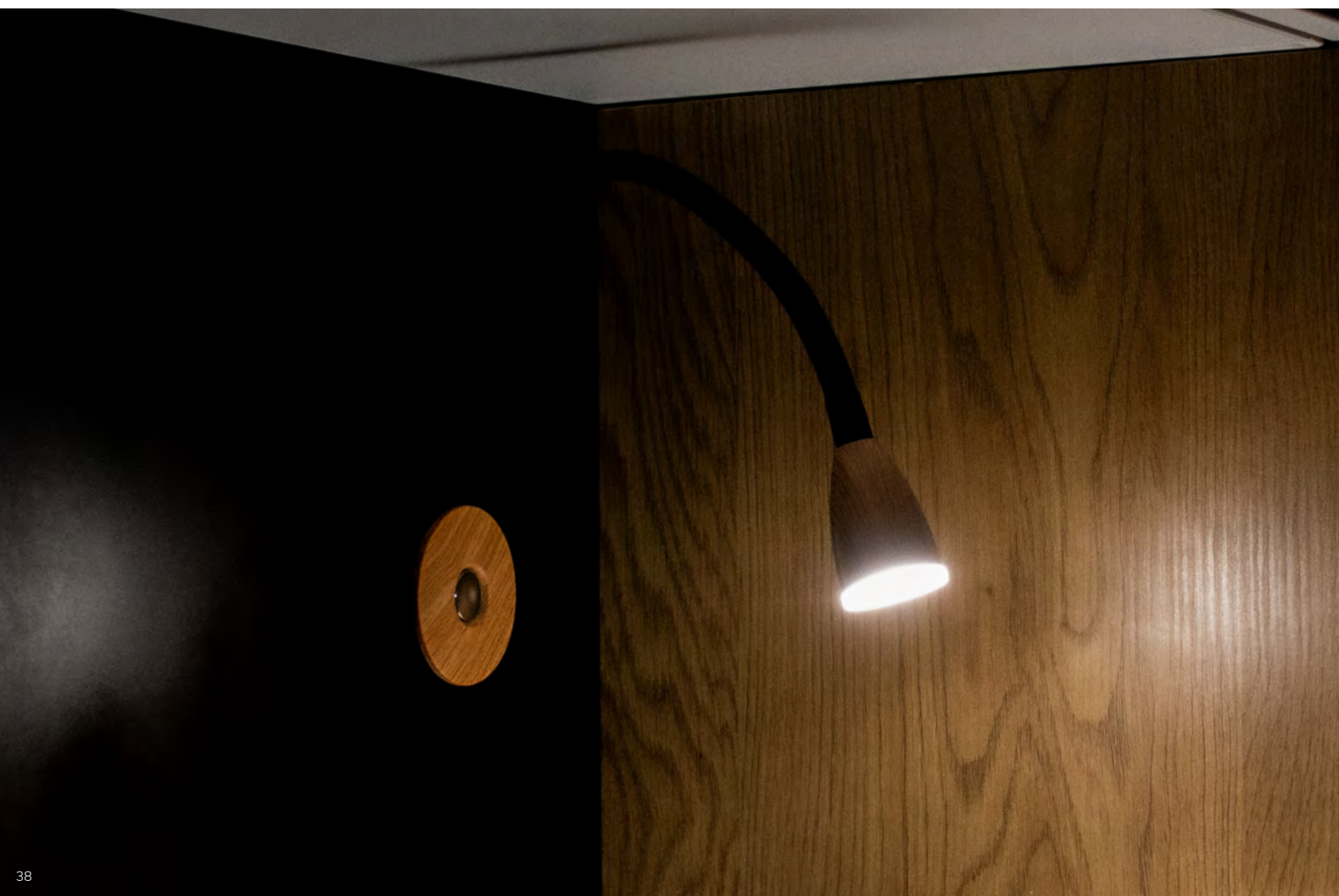
EXTRA LONG READING LIGHT

CODE: SFL3

- Matte black finish
- Extra long flexible silicone arm
- Dimmable touch switch
- Cool white light mode (dimmable when switch is pressed continuously)
- Blue night light mode

Specifications:
10-15V DC, SMD LED, 2W (0.2W for night light), 6000K
USB-C 5V 2.1A
Max Amp draw 0.2A

Dimensions:
60mm dia. base
Flexible arm length: 290mm



INTERIOR READING LIGHTS



80MM CARAVAN READING LIGHT

CODE: BNL1

- Matte black finish
- Flexible silicone arm
- Dimmable touch switch
- Cool white light mode
- Blue night light mode
- USB-C Port

Specifications:
10-15V DC, SMD LED, 2W, 6000K
USB-C 5V 2.1A
Max Amp draw 0.2A
Dimensions:
80mm dia. base



80MM CARAVAN READING LIGHT

CODE: BNL2

- Matte black finish
- Flexible silicone arm
- Dimmable touch switch
- Cool white light mode
- Blue night light mode
- USB-C Port

Specifications:
10-15V DC, SMD LED, 2W, 6000K
USB-C 5V 2.1A
Max Amp draw 0.2A
Dimensions:
80mm dia. base

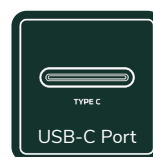


80MM CARAVAN READING LIGHT

CODE: BNL3

- Matte black finish
- Flexible silicone arm
- Dimmable touch switch
- Cool white light mode
- Blue night light mode
- USB-C Port

Specifications:
10-15V DC, SMD LED, 2W, 6000K
USB-C 5V 2.1A
Max Amp draw 0.2A
Dimensions:
80mm dia. base



80MM CARAVAN READING LIGHT

CODE: BNL4

- Matte black finish
- Flexible silicone arm
- Dimmable touch switch
- Cool white light mode
- Blue night light mode
- USB-C Port

Specifications:
10-15V DC, SMD LED, 2W, 6000K
USB-C 5V 2.1A
Max Amp draw 0.2A
Dimensions:
80mm dia. base



INTERIOR CEILING LIGHTING

76MM CARAVAN CEILING LIGHT - WHITE

CODE: CL76-W

- Cool white light mode - 5000k
- Material: PC + Aluminium
- Fully UV stabilised

Specifications:

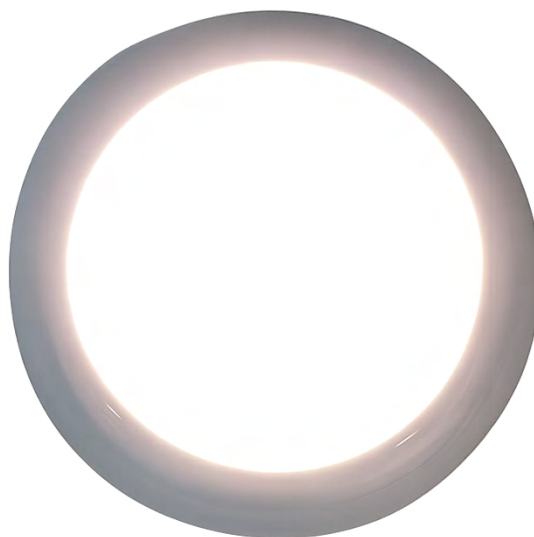
12V DC, 3W, 360lm

Max draw: 0.29A

Beam Angle: 120°

Dimensions:

76mm dia. x 12mm (h)



TRI-COLOUR CEILING LIGHT - WHITE

CODE: CL126-W

- Switch & memory function
- IP67 waterproof rating
- Fully UV stabilised
- 10-30V, 3W (single) 7W (dual)
- AMP draw range: 0.21A - 1.06A
- Light modes: Cool white, amber light, day light (all dimmable)

Specifications:

10 – 30V DC, 3W (single), 7W (dual)

AMP draw range: 0.21A – 1.06A

450lm

Dimensions:

126mm dia. x 12mm (h)



EXTERIOR LIGHTING



DUAL COLOUR AWNING LIGHT - WITH SWITCH

CODE: EBL25-W | White finish | 255mm length
 CODE: EBL55-W | White finish | 550mm length
 CODE: EBL25-B | Black finish | 255mm length
 CODE: EBL55-B | Black finish | 550mm length

- Available in black or white finish
- Switch & memory function
- IP66 waterproof rating
- Fully UV stabilised
- Cool white (dimmable)
- Amber light (dimmable)

255mm (l) light specifications:
 0-30V, 18AWG wire.
 AMP draw range: 0.10A - 0.65A

Dimensions:
 255mm (l)

550mm (l) light specifications:
 10-30V, 18AWG wire.
 AMP draw range: 0.28A - 0.65A

Dimensions:
 550mm (l)

NEW!



DUAL COLOUR AWNING LIGHT - WITH NO SWITCH

CODE: EBL25-WNS | White finish | 255mm length
 CODE: EBL55-WNS | White finish | 550mm length
 CODE: EBL25-BNS | Black finish | 255mm length
 CODE: EBL55-BNS | Black finish | 550mm length

- Available in black or white finish
- IP66 waterproof rating
- Fully UV stabilised
- Cool white & amber light mode
- Material: PC + aluminium

255mm (l) light specifications:
 18AWG wire (Red, Black, Amber wires)
 Separate wires for: White/amber mode & ground
 10 - 30V DC, AMP draw max: 0.20A
 Dimensions:
 24mm (w) x 30mm (h) x 255mm (l)

550mm (l) light specifications:
 18AWG wire (Red, Black, Amber wires)
 Separate wires for: White/amber mode & ground
 10 - 30V DC, AMP draw max: 0.50A
 Dimensions:
 26mm (w) x 30mm (h) x 550mm (l)



Dimmable



Waterproof



UV stabilised



Dual colours



Waterproof

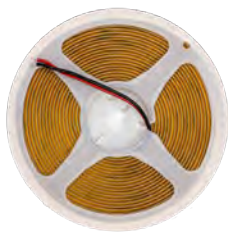


UV stabilised

supex

INTERIOR STRIP LIGHTING

NEW!



COB STRIP LIGHTING

CODE: LS5M-3K

- COB LED provides bright, even lighting with no dark spots
- Genuine 3M adhesive backing
- 5 metre reel
- Warm white LED 3000K
- Cutable every 25mm

Specifications:

480LEDs/m

10.5W per metre, 22.5W for 5 metres

1.67A per 5 metres

Dimensions:

5000mm (l) x 8mm (w) x 2mm (h)

NEW!



3-POSITION ROCKER SWITCH

CODE: RSW-322

Specifications:

3 positions: on/off/on

Rated at 10A/12V DC

IP65 rated

Dimensions: 22mm dia.

NEW!



NEW!



RIGID 30CM LED STRIP LIGHT

CODE: UCB30-5K

- Aluminium extrusion
- Black finish
- PIR sensor - stays on for 2mins
- Sensor works in light and dark conditions
- Sensor range up to 4m
- Waterproof to IP67
- Neutral white colour mode - 4500K
- 2x flat & 2x 45° angled brackets included

Specifications:

12V DC, 3W, 100 lm/W

Amp draw: 0.25A

Dimensions:

300mm (l) x 20mm (w) x 10mm (d)

RIGID 50CM LED STRIP LIGHT

CODE: UCB50-5K

- Aluminium extrusion
- Black finish
- PIR sensor - stays on for 2mins
- Sensor works in light and dark conditions
- Sensor range up to 4m
- Waterproof to IP67
- Neutral white colour mode - 5000K
- 2x flat & 2x 45° angled brackets included

Specifications:

12V DC, 6.6W, 100 lm/W

Amp draw: 0.55A

Dimensions:

500mm (l) x 20mm (w) x 10mm (d)



LIGHTING



OYSTER LIGHT

CODE: SRLED1

- 12V interior roof mount light
- Body colour: white
- Cool white light, 6W

Dimensions:
260mm dia.



ULTRA SLIM LIGHT

CODE: SRLED5 | 127mm dia.
CODE: SRLED27 | 216mm dia.

- Opal panel light with switch
- Body colour: white



READING LIGHT

CODE: SRLED2

- LED frosted glass swivel light

Dimensions:
106mm (h)



SRLED15B



SRLED15C

READING LIGHT

CODE: SRLED15B | 160mm (h)
CODE: SRLED15C | 139mm (h)

- 10-15V programmed reading light
- Crystal glass flexible light
- Dual colour - cool white, blue



DUAL COLOUR READING LIGHT WITH USB-C

CODE: SRLED28 | Silver
CODE: SRLED29 | Black

- 10-15V flexible reading light with dual colour light (cool white / blue)
- USB charger for devices
- Includes installation screws and guide

Dimensions:
60mm (dia. base) x 165mm (h)



AWNING LIGHT

CODE: SRLED8W | White
CODE: SRLED8B | Black

- Available in black and white

Dimensions:
250mm (l) x 40.5mm (w) x 30mm (h)



AWNING LIGHT

CODE: SRLED9W | White
CODE: SRLED9B | Black

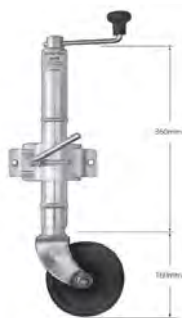
- Available in black and white

Dimensions:
550mm (l) x 40.5mm (w) x 30mm (h)



RV & TRAILER HARDWARE

JOCKEY WHEELS



ECONOMY JOCKEY WHEEL

CODE: JW1E

- Solid rubber wheel with nylon web bore
- Includes clamp
- Unit Weight: 5.2kg
- Static Load Capacity: 500kg

Dimensions:

Wheel: 150mm x 50mm (6" x 2")

Lift: 225mm



ECONOMY SWIVEL JOCKEY WHEEL

CODE: JW2E

- Solid rubber wheel with nylon web bore
- With pin locking swivel bracket welded in position
- Unit Weight: 6.0kg
- Static Load Capacity: 350kg

Dimensions:

Wheel: 150mm x 50mm (6" x 2")

Lift: 225mm



MEDIUM JOCKEY WHEEL

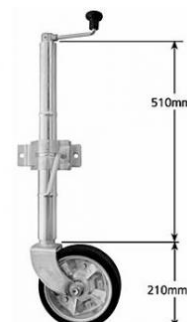
CODE: JW4Z

- Rubber tyre with zinc plated steel centre and roller bearings
- Includes clamp
- Unit Weight: 6.6kg
- Static Load Capacity: 750kg

Dimensions:

Wheel: 200mm x 55mm (8" x 2")

Lift: 225mm



EXTRA HEIGHT JOCKEY WHEEL

CODE: JW4ZEH

- Rubber tyre with zinc plated steel centre and roller bearings
- Includes clamp
- Unit Weight: 8.5kg
- Static Load Capacity: 700kg

Dimensions:

Wheel: 200mm x 55mm (8" x 2")

Lift: 225mm



MEDIUM SWIVEL JOCKEY WHEEL

CODE: JW4ZUB

- Rubber tyre with zinc plated steel centre and roller bearings
- With pin locking swivel bracket welded in position
- For fixing with U-Bolts (suits 2", 3", 4", 5" & 6" U-Bolts)
- Unit Weight: 9.6kg
- Static Load Capacity: 750kg

Dimensions:

Wheel: 200mm x 55mm (8" x 2")

Lift: 225mm



EXTRA HEIGHT JOCKEY WHEEL

CODE: JWSW-4ZEH

- Rubber tyre with zinc plated steel centre and roller bearings
- Side winding; includes clamp
- Unit Weight: 8.6kg
- Static Load Capacity: 700kg

Dimensions:

Wheel: 200mm x 55mm (8" x 2")

Lift: 225mm

ADJUSTABLE LEGS & ACCESSORIES



SMALL ADJUSTABLE LEG

CODE: ALQR1 | Zinc plated

- Weld on
- Unit Weight: 4.7kg
- Height: 400mm / Lift: 120mm



MEDIUM ADJUSTABLE LEG

CODE: ALQR2 | Zinc plated

- Weld on
- Unit Weight: 5.1kg
- Height: 460mm / Lift: 180mm



LARGE ADJUSTABLE LEG

CODE: ALQR3 | Zinc plated

- Weld on
- Unit Weight: 5.7kg
- Height: 520mm / Lift: 140mm



SMALL ADJUSTABLE LEG WITH ALUMINIUM FOOT

CODE: ALQR1-AF
CODE: ALQR1-HT | Hammertone

- Unit Weight: 4.7kg
- Height: 400mm
- Lift: 120mm



MEDIUM ADJUSTABLE LEG WITH ALUMINIUM FOOT

CODE: ALQR2-AF
CODE: ALQR2-HT | Hammertone

- Unit Weight: 5.1kg
- Height: 460mm
- Lift: 180mm



LARGE ADJUSTABLE LEG WITH ALUMINIUM FOOT

CODE: ALQR3-AF
CODE: ALQR3-HT | Hammertone

- Unit Weight: 5.7kg
- Height: 520mm
- Lift: 140mm



EXTRA LARGE ADJUSTABLE LEG, STEEL FOOT

CODE: ALQR4LP | Zinc plated
CODE: ALQR4LP-HT | Hammertone

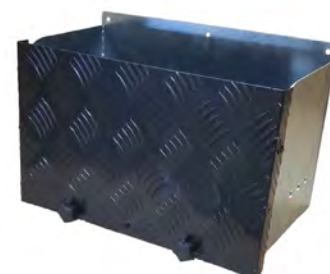
- Weld on
- Unit Weight: 6.2kg
- Height: 620mm
- Lift: 180mm



QUICK RELEASE ADJUSTABLE LEG

CODE: AL-ALQR1-3

- With aluminium foot
- Replaces ALQR1, ALQR2 & ALQR3
- Unit Weight: 8.00kg
- Closed Height: 430mm
- Extension Leg Max: 160mm
- Lift Leg Max: 120mm
- Extended Height: 710mm



BATTERY BOX

CODE: BATBOXSET

- Suits batteries up to 380mm wide
- Pack includes 1 base, 1 lid, 1 angle pcs, 2 hooks, 2 knobs

Dimensions: 380mm (l) x 200mm (w) x 215mm (h)

WHEEL HOLDERS



LARGE JOCKEY WHEEL HOLDER

CODE: SRWJCH

- Can be pegged to the ground
- Made from black plastic

Dimensions:
204mm (dia.) x 35mm (h)



RUBBER WHEEL HOLDER

CODE: RWHL

- Support cradle for use under 200mm and 250mm jockey wheels
- Unit Weight: 0.55kg

Dimensions:
170mm (l) x 130mm (w) x 40mm (h)



LARGE RUBBER WHEEL HOLDER

CODE: RWHL

- Large support cradle for use under 200mm and 250mm jockey wheels

Dimensions:
200mm (l) x 130mm (w) x 50mm (h)

supex

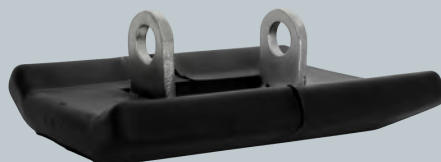
ADJUSTABLE LEG ACCESSORIES



ALUMINIUM FOOT

CODE: ALQRAF

- Suits ALQR leg



PLASTIC FOOT

CODE: ALQRPF

- Suits ALQR leg

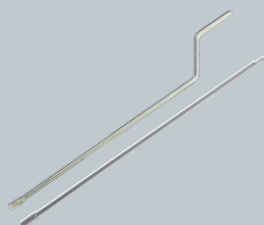


PIN FOR REPLACEMENT FOOT

CODE: ALQRPS | Small
CODE: ALQRPL | Large

- Small, to suit plastic covered feet
- Large, to suit aluminium feet

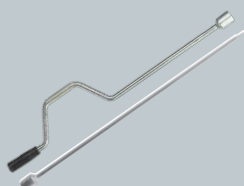
RV HARDWARE ACCESSORIES



P SERIES HANDLE

CODE: LH2P | Slotted type |
700mm (l) | Weight: 680g

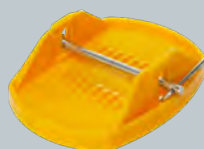
CODE: LH2PD | Slotted type, drill
style | 570mm (l) | Weight: 500g



HEX HEAD HANDLE

CODE: LH2M | Hex head type |
700mm (l) | Weight: 840g

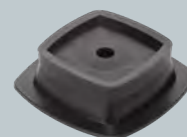
CODE: LH2MD | Hex head type,
drill style | 590mm (l) | Weight:
600g



CARAVAN JACK PAD

CODE: SRWJ

- Four piece set
- Dimensions: 180mm (d) x 140mm
(w) x 50mm (h)



JACK PAD STACKER

CODE: SRWJP

- Four piece set
- Dimensions: 145mm (d) x 145mm
(w) x 40mm (h)



TWIN COUPLING LOCK

CODE: TCL

- Twin coupling lock complete with 38mm brass padlock
- Unit weight: 1.86kg



D-SHACKLES

CODE: DS1 | Small | 1000kg WLL rated; ADR
Approved; 10mm
CODE: DS2 | Medium | 1500kg WLL rated;
ADR Approved; 11mm
CODE: DS3 | Large | 2000kg WLL rated; ADR
Approved; 13mm



BOW SHACKLES

CODE: BSH1 | Small | 1000kg WLL rated;
ADR Approved; 10mm
CODE: BSH2 | Medium | 1500kg WLL rated;
ADR Approved; 11mm
CODE: BSH3 | Large | 2000kg WLL rated;
ADR Approved; 13mm

JERRY CAN HOLDER



JERRY CAN HOLDER

CODE: JCHD

- Zinc plated finish
- Weld on style / metal strap
- Unit Weight: 3.0kg

Inside Dimensions:
180mm (d) x 370mm (w) x 295mm (h)



JERRY CAN HOLDER, FRONT OPENING

CODE: JCHDO

- Zinc plated finish
- Weld on style / metal strap
- Unit Weight: 3.4kg

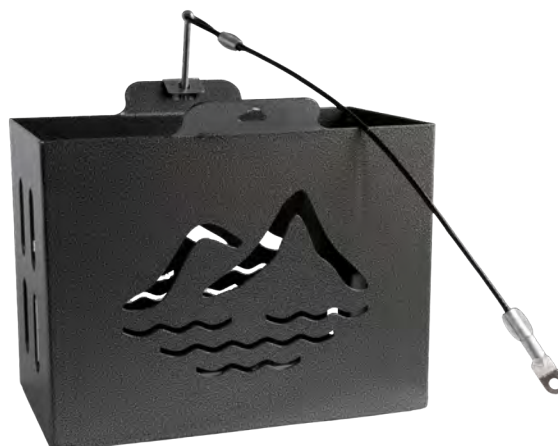
Inside Dimensions:
180mm (d) x 370mm (w) x 295mm (h)



JERRY CAN HOLDER, HAMMERTONE FINISH WITH SIDE FLANGES

CODE: JCHD-SF

- Hammertone finish
- Bolt on style / with side flanges
- Unit Weight: 6.0kg



JERRY CAN HOLDER, HAMMERTONE FINISH WITHOUT SIDE FLANGES

CODE: JCHD-NSF

- Hammertone finish
- Bolt on style / no side flanges
- Unit Weight: 6.0kg

GAS BOTTLE HOLDERS

supex



SMALL ADJUSTABLE GAS BOTTLE HOLDER, FRONT OPENING

CODE: AGBHSO

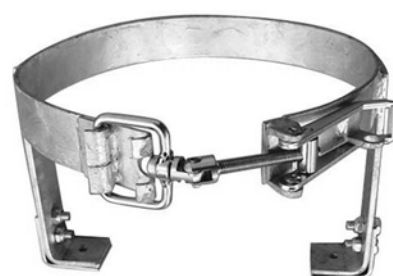
- Suits 4.0kg gas bottle
- Zinc plated
- Weld on style
- Unit Weight: 1.86kg



LARGE ADJUSTABLE GAS BOTTLE HOLDER, FRONT OPENING

CODE: AGBHLO

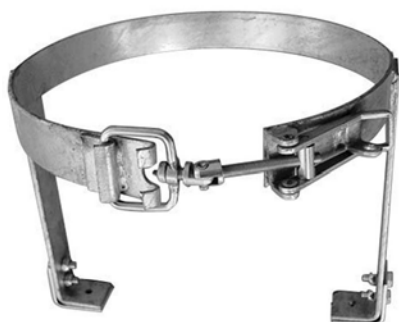
- Suits 9.0kg gas bottle
- Zinc plated
- Weld on style
- Unit Weight: 2.0kg



SMALL ADJUSTABLE GAS BOTTLE HOLDER

CODE: AGBHS

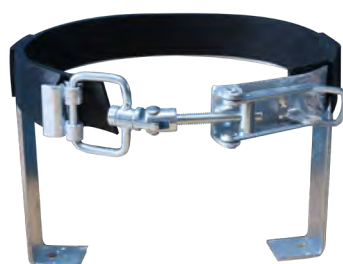
- Zinc plated, to suit 4.0kg gas bottle
- Mount brackets for weld on
- Galvanised holder bolted to brackets for easy replacement
- Fully adjustable and lockable
- Unit Weight: 1.86kg



LARGE ADJUSTABLE GAS BOTTLE HOLDER

CODE: AGBHL

- Zinc plated, to suit 9.0kg gas bottle
- Mount brackets for weld on
- Galvanised holder bolted to brackets for easy replacement
- Fully adjustable and lockable
- Unit Weight: 2.36kg



RUBBER RING, SMALL

CODE: AGBHS-RR

- Place around metal ring of holder to prevent chafing and wear & tear
- 100% rubber ring, black

Note: Gas Bottle Holder not included



RUBBER RING, LARGE

CODE: AGBHL-RR

- Place around metal ring of holder to prevent chafing and wear & tear
- 100% rubber ring, black

Note: Gas Bottle Holder not included



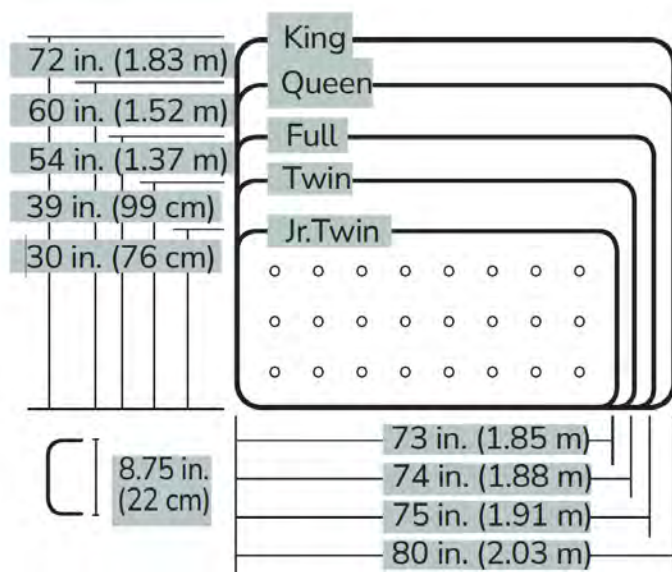
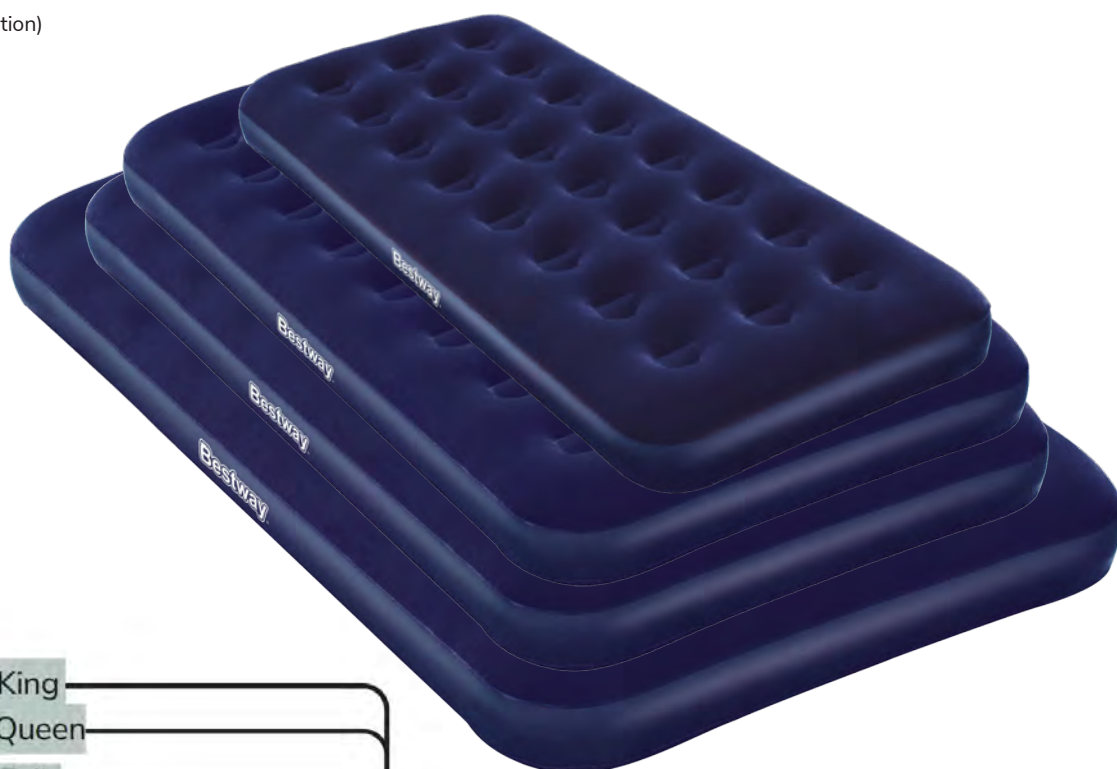
FURNITURE & BEDDING

BEDDING

VELOUR AIR BEDS

CODE: AIRB1 | Single | 185cm (l) x 76cm (w) x 22cm (d)
 CODE: AIRB2 | Twin | 188cm (l) x 99cm (w) x 22cm (d)
 CODE: AIRB3 | Double | 191cm (l) x 137cm (w) x 22cm (d)
 CODE: AIRB4 | Queen | 203cm (l) x 152cm (w) x 22cm (d)

- SID Valve (Smart Inflation/Deflation)
- Coil beam construction
- PVC base
- Velour top



ACCESSORIES

BOSTON VALVE

CODE: BV

- Replacement boston valve to suit velour air beds



CAMPING CHAIRS



ALUMINIUM DIRECTORS CHAIR

CODE: 23JA

- Lightweight directors chair with side table, cup holder and phone holder
- Folds flat for easy storage and transportation
- Made from 600D polyester fabric with PVC coating
- Weight Rating: 120kg
- Product weight: 3.8kg

Dimensions:

Total Height: 970 mm

Seat: 510mm (h) x 430mm (d) x 530mm (w)

Stored: 540mm (d) x 170mm (w) x 970mm (h)



RECLINING HARD ARM CHAIR

CODE: 23S

- Reclining Chair with hard arm rests
- Completely collapsible into carry bag with strap
- Expandable cup holder, phone holder pocket
- Made from 600D polyester fabric with PVC coating
- Weight Rating: 120kg
- Product weight: 6.5kg

Dimensions:

Total Height: 970 mm

Seat: 510mm (h) x 430mm (d) x 530mm (w)

Stored: 540mm (d) x 170mm (w) x 970mm (h)



CAMP QUAD CHAIR

CODE: 23L

- Made from durable 600D PVC fabric with 19mm powder coated steel frame
- Features mesh cup holder, includes carry bag
- Weight Rating: 100kg
- Product Weight: 2.2kg

Dimensions: Back: 910mm / Seat: 440mm (h) x 500mm (d) x 450mm (w)

Stored Dimensions: 200mm (d) x 200mm (w) x 1080mm (h)



KING SIZE ACTION CHAIR

CODE: 23K

- Made from durable 600D PVC fabric with 19mm powder coated steel frame, includes carry bag
- Features fabric cup holder, side pocket and quilted design
- Weight Rating: 130kg
- Product Weight: 3.5kg

Dimensions: Back: 1110mm / Seat: 500mm (h) x 530mm (d) x 590mm (w)

Stored Dimensions: 230mm (d) x 230mm (w) x 1040mm (h)

CAMPING STOOLS



supex

SMALL HOOP LEG STOOL

CODE: 21B

- Galvanised 19mm steel frame
- Canvas cover colours vary

Dimensions:

Stool height: 410mm

Seat area: 220mm (d) x 310mm (w)



CHAIRETTE

CODE: 23D

- Galvanised 19mm steel frame
- Canvas cover colours vary

Dimensions:

Stool height: 400mm

Seat area: 320mm (d) x 330mm (w)

LARGE HOOP LEG STOOL

CODE: 21C

- Galvanised 19mm steel frame
- Canvas cover colours vary

Dimensions:

Stool height: 450mm

Seat area: 280mm (d) x 340mm (w)

TRI-LEG STOOL

CODE: 21E | 50cm high

CODE: 21F | 65cm high

- 19mm steel legs with 600D PVC fabric cover
- Weight rating: 100kg / Product Weight: 0.9kg
- 21E Dimensions: Seat: 300mm (d) x 300mm (w) / Stool height: 500mm
- Stored Dimensions: 70mm (d) x 80mm (w) x 580mm (h)
- 21F Dimensions: Seat: 330mm (d) x 330mm (w) / Stool height: 650mm
- Stored Dimensions: 70mm (d) x 80mm (w) x 770mm (h)



CAMPING TABLES



UTILITY TABLE

CODE: 31K

- Portable & lightweight
- Easy to carry, quick to set up
- Aluminium frame with MDF top
- Folds flat to save space

Dimensions:

38cm (d) x 53cm (w) x 64cm (h)

Product Weight: 2.5kg



SMALL FOLD IN HALF TABLE

CODE: 31S

- Lightweight fold in half table
- Black aluminium frame with woodgrain style MDF top
- Small & compact for efficient use of space

Dimensions:

39.5cm (d) x 60cm (w) x 40cm (h)

Product Weight: 2.0kg



PERSONAL TABLE

CODE: 31M

- Blow-moulded for superior strength
- Folds flat for the space efficiency
- Four adjustable height positions

Dimensions:

50cm (d) x 77cm (w)

Heights: 12cm, 50cm, 63.5cm, 74cm

Product Weight: 5.0kg, Steel legs: 19mm dia.



LIGHTWEIGHT TABLE

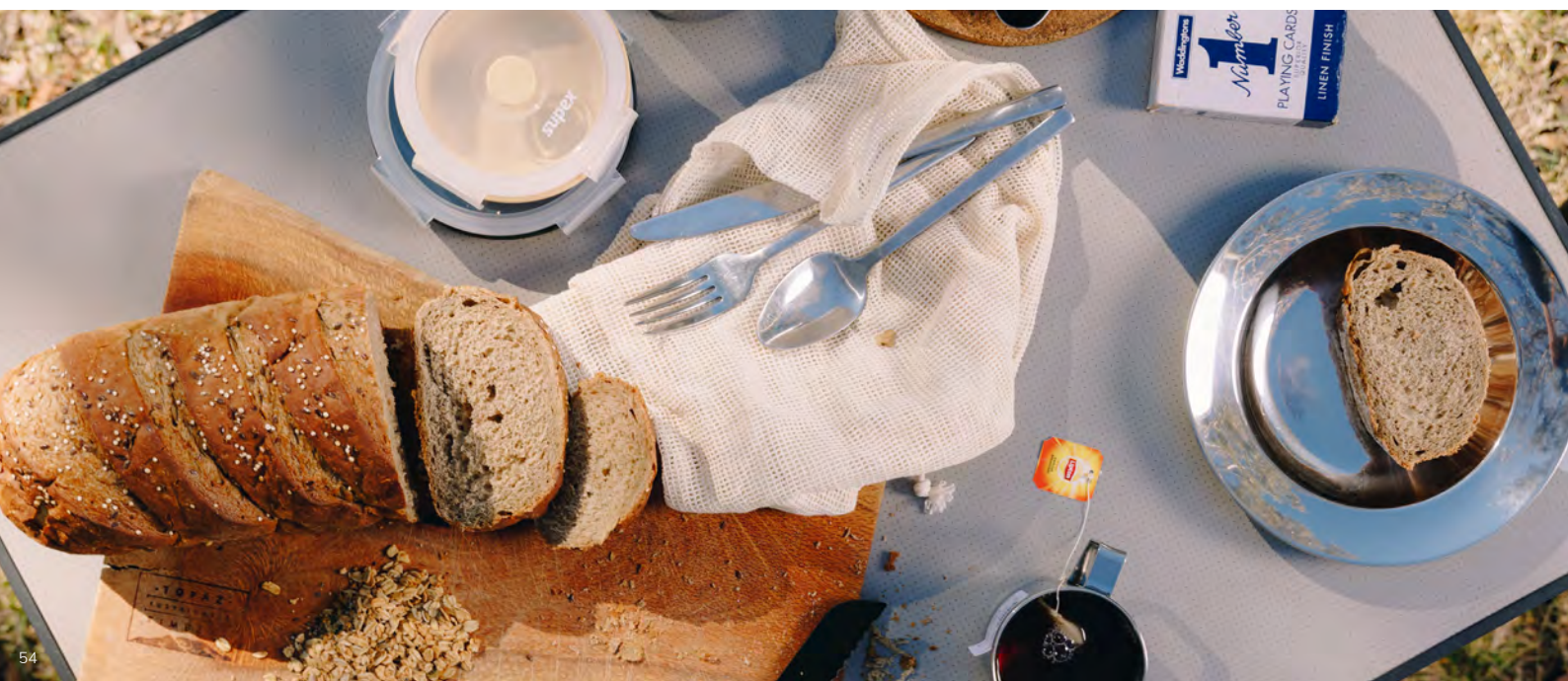
CODE: 31G

- Classic camping table, easy to carry and assemble
- Folding legs for compact storage
- Aluminium frame with MDF top

Dimensions:

60cm (d) x 80cm (w) x 70cm (h)

Product Weight: 3.6kg



WANDERLITE FURNITURE

supex



WANDERLITE ULTRA HIKER CHAIR

CODE: 23G

- Ultralight collapsible chair
 - 600D Oxford cloth with high strength aluminium alloy frame
 - Weight rating: 150kg
 - Product weight: 0.92kg
- Dimensions: 510mm (d) x 570mm (w) x 650mm (h)
Fits into carry bag: 110mm (d) x 150mm (w) x 360mm (l)



WANDERLITE MIGHTY HIKER CHAIR

CODE: 23F

- Medium lightweight collapsible chair
 - Features: mesh pocket, bottle holder, easy assembly, foldable legs, 600D Oxford cloth, high strength aluminium alloy frame
 - Weight rating: 120kg
 - Product weight: 1.39kg
- Dimensions: 640mm (d) x 650mm (w) x 790mm (h)
Fits into carry bag: 110mm (d) x 470mm (l)



WANDERLITE VOYAGER CHAIR

CODE: 23M

- Large lightweight collapsible chair
 - Features: easy assembly, foldable legs, padded headrest, 600D Oxford cloth, high strength aluminium alloy frame
 - Weight rating: 120kg
 - Product weight: 1.45kg
- Dimensions: 800mm (d) x 530mm (w) x 970mm (h)
Fits into carry bag: 100mm (d) x 470mm (l)



WANDERLITE NOMAD TABLE

CODE: 23W

- Super-light slat table, includes carry bag
 - High strength aluminium alloy frame with black plastic clip-on slats
 - Features: easy assembly, flat-pack legs and slats, scientifically structured design
 - Weight capacity: 15kg
 - Product weight: 1.2kg
- Dimensions: 400mm (d) x 560mm (w) x 400mm (h)



WANDERLITE SEEKER TABLE

CODE: 23X

- Reinforced fabric top table
- 300D rip-stop polyester with high strength aluminium alloy frame
- Features: two large cup holders, anti-sink foot stops
- Weight capacity: 15kg
- Product weight: 0.75kg

Dimensions: 380mm (d) x 590mm (w) x 400mm (h)





COOKWARE

TRIPODS

LARGE TRIPOD

CODE: TP3

- Solid steel
 - Includes carry bag
- Dimensions: 10mm (dia.) x 900mm (h)



SMALL COLLAPSIBLE TRIPOD

CODE: TP5

- Multipurpose; can be used with frypans, skillets, ovens, woks and saucepans
- Folds flat for easy storage
- Includes carry bag



TOASTERS

SINGLE SLICE TOASTER

CODE: MBSTT

- Single slice box toaster
- Dimensions: 110mm (d) x 165mm (w) x 30mm (h)



FOUR SLICE TOASTER

CODE: M4SLT

- Four slice box toaster
- Dimensions: 200mm (dia.) x 15mm (h) | Assembled height - 220mm



CAST IRON

DOUBLE JAFFLE IRON

CODE: JIDL

- Pre-seasoned with metal clasp and wooden handle
- Dimensions: 275mm (w) x 140mm (d)



SQUARE FRYPAN

CODE: FP10

- Pre-seasoned with wooden screw-in handle
 - Square, griddle base
- Dimensions: 250mm (w) x 250mm (d)



3 QUART SAUCEPAN

CODE: SP3

- Pre-seasoned with wooden handle
- Volume: Three quart

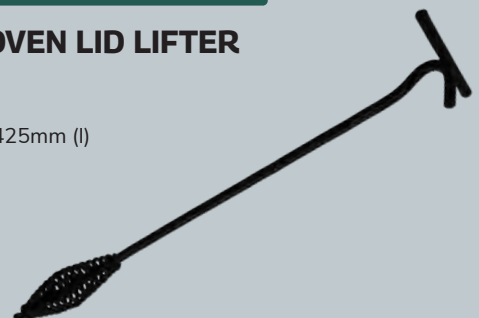


ACCESSORIES

DUTCH OVEN LID LIFTER

CODE: DOL1

Dimensions: 425mm (l)



ZEBRA STAINLESS STEEL MUGS



MUG

CODE: SUP110007 | 7cm dia. | 250mL
 CODE: SUP110008 | 8cm dia. | 400mL
 CODE: SUP110009 | 9cm dia. | 500mL
 CODE: SUP110010 | 10cm dia. | 750mL



MUG WITH LID

CODE: SUP110108 | 8cm dia. | 400mL
 CODE: SUP110109 | 9cm dia. | 500mL
 CODE: SUP110110 | 10cm dia. | 750mL

ZEBRA STAINLESS STEEL SERVINGWARE



PLATE

CODE: SUP120020 | 20cm dia.
 CODE: SUP120023 | 23cm dia.



BOWL

CODE: SUP111014 | 14cm dia. | 800mL
 CODE: SUP111018 | 18cm dia. | 1.6L



ZEBRA STAINLESS STEELWARE

3 PIECE CAMPING SET

CODE: SUP184211

- Three piece camping set with carry bag
- Includes two pots (one with folding handle) and frying pan with folding handle

Dimensions:

Pot with handle - 14cm dia., 1.2L capacity

Pot with folding handle - 16cm dia., 1.7L capacity

Frying pan with folding handle - 16cm dia., 700ml capacity



LOOP HANDLE POTS

CODE: SUP151612 | 12cm dia. | 1.4L

CODE: SUP151614 | 14cm dia. | 2.0L

CODE: SUP151616 | 16cm dia. | 3.0L

- Auto-lock loop handle pot
- Sturdy handle automatically 'locks' the lid on when placed upright
- Fitted lid
- Food grade stainless steel



ZEBRA STAINLESS STEEL FOOD STORAGE



ROUND LUNCH BOX

CODE: SUP152312 | 12cm d. | 700mL

CODE: SUP152314 | 14cm d. | 1.1L

- Food grade stainless steel round lunch box
- Folding handle
- Includes inner tray; separate different foods or use as a bowl
- Easy clip lid to keep everything safe & secure



RECTANGULAR LUNCH BOX

CODE: SUP152016

- Rectangular lunch box
- Includes round inner box

Dimensions: 16cm (l) x 12.5cm (w) x 5.8cm (h)
780ml capacity



TIERED LUNCH BOX

CODE: SUP152042

- Two tier oval lunch box
- Includes inner box
- Sturdy lock, foldable handle

Dimensions:
14cm diameter
1.1L capacity



TIERED FOOD CARRIER

CODE: SUP150103 | 10cm dia. | Three tier food carrier

CODE: SUP150122 | 12cm dia. | Two tier food carrier

CODE: SUP150142 | 14cm dia. | Two tier food carrier

- Two or three-tier food carrier
- Tiers click together for carrying and transport
- Fitted lid and lock
- Food Grade stainless steel

ZEBRA STAINLESS STEEL COOKING GEAR

BILLY WITH LID

CODE: SUP113114

- Billy style tea pot with seamless interior, fitted lid, folding handle and slotted spout
- 14cm diameter | 2.0L capacity



supex

WHISTLING KETTLE

CODE: SUP113524

- 3.5L capacity



STOCK POT

CODE: SUP171338

- For use on all stoves
- 28cm diameter
- 17.2L capacity





BEACH & SHELTER

SHELTER

3M X 3M GAZEBO

CODE: GAZ33

- 2.9m x 2.9m gazebo with wheeled carry bag
- Includes ropes & pegs
- Waterproof, 420D Oxford PVC coated polyester canopy
- Weight: 22kg
- Adjustable height
- UPF Rating 50+

Dimensions:

2900mm (w) x 2900mm (d)
x 3120mm-3320mm (h (lowest to highest))



supex

ACCESSORIES

3M X 3M SOLID WALL

CODE: GAZWAL

- 3m solid side wall, fits to any side of the 3m x 3m gazebo
- Attaches with hook & loop tape
- Waterproof, 420D Oxford PVC coated polyester canopy
- UPF Rating 50+

Dimensions:

3000mm (w) x 3000mm (h)



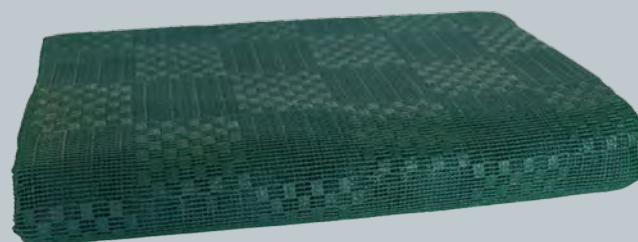
3M X 3M PVC FOAM CARPET

CODE: FC3X3GN

- 3m x 3m green PVC matting to suit gazebo
- Premium quality, heavy duty PVC material
- Water, dirt & sand draining
- UV treated, lightweight & soft to touch
- Breathable 550gsm PVC foam
- Includes carry bag

Dimensions:

3000mm (l) x 3000mm (w)



INFLATABLE BOATS

SINGLE SEAT BOAT SET

CODE: BT1

- Single seat inflatable boat; inflatable floor for comfort
- Features: tow ring & tow rope, built-in grommets
- Weight Rating: 80kg

Dimensions: 107cm (w) x 165cm (l)



DOUBLE SEAT BOAT SET

CODE: BT2

- Double seat inflatable boat; inflatable floor for comfort
- Features: tow ring & tow rope, built-in grommets, oar clasps
- Includes oar set & foot pump

Dimensions: 115cm (w) x 197cm (l)



OAR SETS

supex



PLASTIC OAR SET

CODE: OAR1

- Plastic oar set with ribbed blade
- Three section structure for easy assembly



ALUMINIUM OAR SET

CODE: OAR2

- Sectional aluminium oar set
- Can be used as one twin blade paddle; 2.18m (l) OR two single blade paddles, each 1.45m (l)

PUMPS



12V AIR PUMP

CODE: PP1

- DC 12V, 96W
- Large air chamber for inflation
- Plugs into 12V car outlet
- Max airflow: 680 L/min



240V AIR PUMP

CODE: PP2

- 240V, 110W
- Large air chamber for inflation
- Three valve adaptors
- Max airflow: 680 L/min



FOOT BELLOWS

CODE: PP3

- Foot bellows, 5000CC



PUSH / PULL PUMP

CODE: PP4

- 13000CC
- Inflates/deflates on up/down stroke



LIGHTING & ACCESSORIES

VERSA LIGHTS

supex



VERSA LIGHT 25

CODE: VL25

- Rechargeable waterproof multi-use light
- Features five light modes: torch, daylight, bug repellent amber, cool white & flashing SOS
- All modes dimmable
- Heavy duty lanyard, glass breaker & built in magnets
- Waterproof to IP66
- Battery: 2500mAh, USB-C Charging (cord included)

Dimensions:
155mm (l) x 42mm (w)



VERSA LIGHT 44

CODE: VL44

- Rechargeable waterproof multi-use light
- Features five light modes: torch, daylight, bug repellent amber, cool white & flashing SOS
- All modes dimmable
- Heavy duty lanyard, glass breaker & built in magnets
- Waterproof to IP66
- Battery: 4400mAh, USB-C Charging (cord included)

Dimensions:
210mm (l) x 42mm (w)



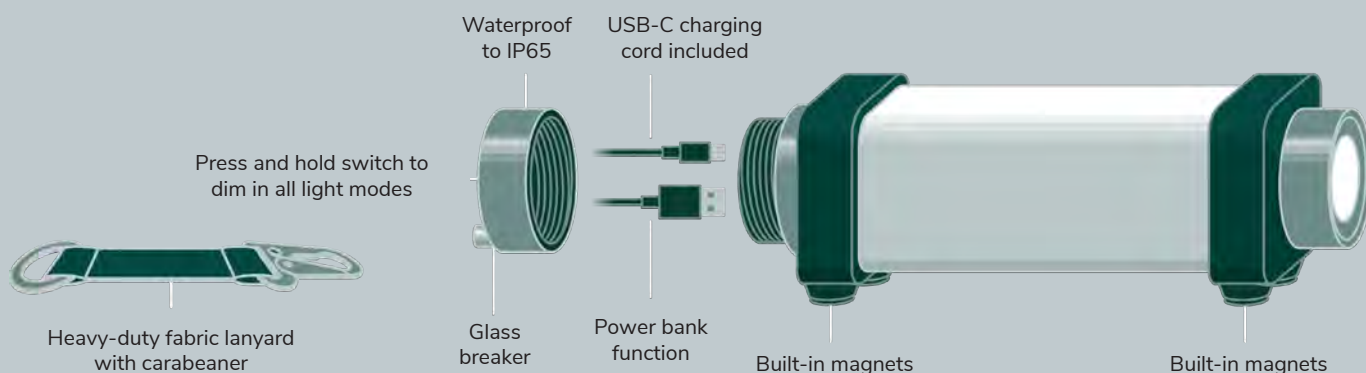
VERSA LIGHT 66

CODE: VL66

- Rechargeable waterproof multi-use light
- Features five light modes: torch, daylight, bug repellent amber, cool white & flashing SOS
- All modes dimmable
- Heavy duty lanyard, glass breaker & built in magnets
- Waterproof to IP66
- Battery: 6600mAh, USB-C Charging (cord included)

Dimensions:
290mm (l) x 42mm (w)

SPECIFICATIONS



RECHARGEABLE LIGHTS

VIBE LIGHT

CODE: VIBE1

- 9 metres of rechargeable string lights for camping with lamp & torch
- Handle for hanging under awning, gazebo or tent
- 8 different light modes:
 1. Warm white string lights
 2. Warm white and multi-colour flashing string lights
 3. Multi-colour breathing string lights
 4. Warm white string lights with lamp
 5. Bright warm lamp only
 6. Bright torch
 7. Dim torch
 8. Bright flashing (SOS) torch



SPECIFICATIONS

- Power: 3000 mAh
- Charging time: 5 hours
- Box Includes: 1x Vibe light, 1x USB charging cord
- Waterproof to IP44

Dimensions: 108mm dia. x 37mm (h)

RECHARGEABLE LIGHT

CODE: HL08

- Multipurpose light with 6 modes
- Use closed, partly or fully opened
- Can be used as a power bank
- Includes hook and carry bag

SPECIFICATIONS

- Run time: 3.5h (high) - 12h (low)
- Brightness: 350Lm - 900Lm
- DC-5V-2A
- Power: 8W
- Product weight: 420g
- Box Includes: 1x Rechargeable light, 1x USB charging cord
- Waterproof to IPX5

Dimensions: 55mm (w) x 220mm (h) x 55mm (d)



RECHARGEABLE ACCESSORIES

supex



RECHARGEABLE FAN

CODE: CF01

- Oscillate fan left to right or have fixed air flow in one direction
- Integrated light with three brightness settings, plus SOS emergency mode (hold for 3 seconds)
- Recharge with provided USB-C charging cord (approx. 3.5 h)
- View battery level via light indicator
- Change the fan speed via the dial

SPECIFICATIONS

- Battery lasts:
 - Night light: approx. 56 h on minimum brightness setting
 - Lowest fan setting with no light: approx. 18 h
 - Oscillating, fan, and light on highest setting: approx. 3.5 h
- Battery: 5000mAh
- 0° - 150° handle shaft
- Box includes: 1x rechargeable fan, 1x USB-C charging cord

Dimensions: 215mm (w) x 245mm (h) x 80mm (d)



RECHARGEABLE AIR PUMP

CODE: AP01

- Compact and portable air pump
- Inflate using the inflatable port, deflate using the vacuum port
- Travel lock function to prevent an accidental start
- LED light for ease of use at night
- Hanging hook

SPECIFICATIONS

- Airflow: 200 - 250 Lm
- Product weight: 162g
- Box includes: 1x rechargeable air pump, 4x nozzles, 1x USB-C charging cord, 1x storage bag

Dimensions: 50mm (w) x 89mm (h) x 55mm (d)



RECHARGEABLE ACCESSORIES



NEW!

RECHARGEABLE UV MOSQUITO ZAPPER

CODE: RUVZM1

- UV zapper eliminates bugs and mosquitoes without chemicals
- Compact, lightweight design for travel storage
- UV light attracts and eliminates flying pests
- Near-silent operation
- Rechargeable battery lasts
- Recharges via micro-USB in
- Twist top/bottom to switch on
- Hanging loop included

SPECIFICATIONS

- 1.2W, 365nm UV light
- 200mAh, 3.7V (18650 lithium)
- 5V/1A, Micro-USB
- Charging Time: 3–4 hours
- Usage Time: 6–8 hours
- Material: ABS + Silicone
- Product weight: 175g
- Box includes: 1x zapper, 1x cleaning brush, 1x charging cord

Dimensions: 87mm (w) × 87mm (d) × 125mm (h)



NEW!

RECHARGEABLE FLY REPELLENT FAN

CODE: RFRF1

- Chemical-free repeller that uses airflow and subtle blade reflections to deter flies
- Stable base; option to hang under shelves or awnings
- Flexible blades pause on contact for safety
- Compact & table-friendly design
- Low-distraction hum for relaxed meals

SPECIFICATIONS

- Battery: 1200mAh, 5V, 0.48W
- Run time: 10 hours approx. (full charge)
- Charge time: 5 hours approx.
- Fully charge before storing
- Material: ABS+PVC
- Box Includes: 1x fly repeller fan, 1x USB charging cord

Dimensions: 82mm (w) × 82mm (d) × 240mm (h)





CAMPING TOOLS



FIXED SHOVEL

CODE: SHV1

- Fixed handle shovel
- Wooden handle, 750mm (l)



FOLDING SHOVEL

CODE: SHV2

- Tri-fold metal handle shovel
- Includes carry bag



MALLET

CODE: MAL

- Weight: 1.2kg
- Fibreglass handle, 230mm (l)



CAMPING HATCHET

CODE: HTC1

- Weight: 1.2kg
- Fibreglass handle, 230mm (l)



MINI SPLITTER

CODE: MISP

- Weight: 1.75kg
- Fibreglass handle, 330mm (l)

SHOWERS

CANVAS SHOWER

CODE: 41BSC

- With plastic rose
- Capacity: 20L



FUEL CONTAINERS

FUEL DRUMS

CODE: J5 | Volume: 5L | Petrol
 CODE: J10 | Volume: 10L | Petrol
 CODE: J20C | Volume: 20L | Red | Petrol
 CODE: J20F | Volume: 20L | Yellow | Diesel

- Fully approved plastic fuel containers



supex

WATER CONTAINERS

COLLAPSIBLE CONTAINER

CODE: CWC10 | Volume: 10L
 CODE: CWC20 | Volume: 20L



WATER CUBE

CODE: PC15 | Volume: 15L
 CODE: PC20 | Volume: 20L
 CODE: PC25 | Volume: 25L

- Made from food grade HDPE
 - BPA free



WATER JERRY CAN

CODE: AT5 | Volume: 5L | Blue
 CODE: AT10 | Volume: 10L | White
 CODE: AT20 | Volume: 20L | White
 CODE: AT20G | Volume: 20L | Heavy Duty | Green

- Made from food grade HDPE
 - BPA free



RECTANGULAR PLASTIC BASIN

CODE: PCS

Dimensions:
 - 300mm (d) x 360mm (w) x 120mm (h)
 - Volume: 9L

ACCESSORIES



AEROFLOW TAP

CODE: PCAFC
 - To suit water cube



BUNG AEROFLOW TAP

CODE: PCAFB
 - To suit water cube and/or jerry can



DRUM SPANNER

CODE: SPA
 - Assists opening water cube caps & bungs



CAP

CODE: PCC
 - To suit water cube



UNIVERSAL ON/OFF TAP

CODE: PCT

HANG SELL AVAILABLE



ON/OFF SNAP TAP

CODE: SNT | Bulk
 CODE: SNT1 | Hang Sell
 Pack of 1



UNIVERSAL BUNG

CODE: PCB



MAINTENANCE & REPAIR

TEAR AID



TEAR AID, RETAIL PACK

CODE: TAO | Type A Gold
CODE: TAB | Type B Blue
CODE: TAV | Type B Green
CODE: TAY | Type B Yellow

- Includes 1x 75mm (w) x 300mm (l) piece
- Plus additional small patches



TEAR AID, WORKSHOP PACK

CODE: TAO2 | Type A Gold
CODE: TAV2 | Type B Green

- Includes 1x 75mm (w) x 1500mm (l) roll

STIMEX TREATMENTS



STIMEX WATERPROOFER

CODE: STWP | Spray can, 500mL
CODE: STWB | Liquid, 500mL

- High concentrate textile coating for fabric treatment
- Permanently elastic and breathable
- Can be applied to moist fabric
- Liquid dilutes to 4L | Spray covers 20m²



STIMEX OUTDOOR SPRAY

CODE: STOS | Volume: 500ml

- For use on outer of outdoor clothing made from waterproof, windproof and breathable fabrics
- Also suited for use on other outdoor clothing, e.g. fleece and shoes
- Silicone free for ventilation
- Spray can



STIMEX LEAK REPAIR

CODE: STPR | Volume: 80ml

- Liquid leak repair for punctures and holes in PVC and vinyl
- Can be used underwater
- Includes applicator brush



STIMEX SEAM SEALER

CODE: STSS | Volume: 85ml

- Liquid waterproofing compound for use on inside of seams
- Includes applicator brush



STIMEX CAMPER CLEANER

CODE: STCC | Volume: 500ml

- Liquid, for use in caravans, campers, boats, cars and interiors, barbeques, garden furniture
- Removes algae, tar, insects, dirt
- Environmentally friendly



STIMEX TENT CLEANER

CODE: STTC | Volume: 500ml

- Liquid detergent for tents, garden parasols, sun shades, awnings, boat sails, chair cushions
- Removes seasonal soiling
- Environmentally friendly
- Treats approx. 50m² of material (e.g. canvas, cotton, dralon, acrylic, nylon, polyester, PVC coatings)

WEBBING



POLY WEBBING

CODE: PW20 | 20mm (w) x 50m (l)
CODE: PW25 | 25mm (w) x 50m (l)
CODE: PW38 | 38mm (w) x 50m (l)
CODE: PW50 | 50mm (w) x 50m (l)



SEAT BELT WEBBING

CODE: SBW25 | 25mm (w) x 100m (l)
CODE: SBW50 | 50mm (w) x 100m (l)

HOOK & LOOP

SELF ADHESIVE HOOK AND LOOP TAPE

CODE: HT25BK-SA-1M

- 1m hook and 1m loop tape in black
- Suitable for canvas, tents, awnings, swags & tarps
- Recommended for tent flap closures, gear bag repairs, DIY camping modifications & canvas fix-ups
Dimensions: 25mm (w) x 1m (l) (each)



NEW!

HOOK & LOOP TAPE, 25MM SEW ON

CODE: HSW25BL | Black hook | 25mm (w) x 25m (l)
CODE: LSW25BL | Black loop | 25mm (w) x 25m (l)
CODE: HSW25WH | White hook | 25mm (w) x 25m (l)
CODE: LSW25WH | White loop | 25mm (w) x 25m (l)

CODE: HSW25BE | Beige hook | 25mm (w) x 25m (l)
CODE: LSW25BE | Beige loop | 25mm (w) x 25m (l)
CODE: HSW25GR | Grey hook | 25mm (w) x 25m (l)
CODE: LSW25GR | Grey loop | 25mm (w) x 25m (l)

HOOK & LOOP TAPE, 50MM SEW ON

CODE: HSW50BL | Black hook | 50mm (w) x 25m (l)
CODE: LSW50BL | Black loop | 50mm (w) x 25m (l)
CODE: HSW50WH | White hook | 50mm (w) x 25m (l)
CODE: LSW50WH | White loop | 50mm (w) x 25m (l)

CODE: HSW50BE | Beige hook | 50mm (w) x 25m (l)
CODE: LSW50BE | Beige loop | 50mm (w) x 25m (l)
CODE: HSW50GR | Grey hook | 50mm (w) x 25m (l)
CODE: LSW50GR | Grey loop | 50mm (w) x 25m (l)

HOOK & LOOP TAPE, 25MM SELF ADHESIVE

CODE: HSA25BL | Black hook | 25mm (w) x 25m (l)
CODE: LSA25BL | Black loop | 25mm (w) x 25m (l)
CODE: HSA25WH | White hook | 25mm (w) x 25m (l)
CODE: LSA25WH | White loop | 25mm (w) x 25m (l)

HOOK & LOOP TAPE, 50MM SELF ADHESIVE

CODE: HSA50BL | Black hook | 50mm (w) x 25m (l)
CODE: LSA50BL | Black loop | 50mm (w) x 25m (l)
CODE: HSA50WH | White hook | 50mm (w) x 25m (l)
CODE: LSA50WH | White loop | 50mm (w) x 25m (l)



CANVAS ACCESSORIES

SIDE RELEASE BUCKLES

CODE: SRB19 | 19mm
CODE: SRB25 | 25mm
CODE: SRB38 | 38mm
CODE: SRB50 | 50mm



supex



TRIGLIDES

CODE: 66C | 19mm
CODE: 66D | 25mm
CODE: 66E | 38mm
CODE: 66F | 50mm

LADDER LOCK

CODE: 66G | 19mm
CODE: 66H | 25mm

D RINGS

CODE: DR1 | 3.2mm (dia.) x 25mm (w) x 21mm (d)
CODE: DR2 | 5mm (dia.) x 25mm (w) x 23mm (d)
CODE: DR3 | 6mm (dia.) x 25mm (w) x 38mm (d)
CODE: DR4 | 6mm (dia.) x 25mm (w) x 46mm (d)

HANG SELL
AVAILABLE



HANG SELL
AVAILABLE



VERTICAL T-TOGGLE WITH METAL FLIPPER

CODE: 66NW | Bulk | White
CODE: 66NWP | Hang Sell Pack of 4
CODE: 66NB | Bulk | Black
CODE: 66NBP | Hang Sell Pack of 4
CODE: 66NWD | White, double
CODE: 66NBD | Black, double

HORIZONTAL T-TOGGLE WITH METAL FLIPPER

CODE: 66OW | Bulk | White
CODE: 66OWP | Hang Sell Pack of 4
CODE: 66OB | Bulk | Black
CODE: 66OBP | Hang Sell Pack of 4
CODE: 66OWD | White, double
CODE: 66OBD | Black, double

CANVAS TO CANVAS T-TOGGLE WITH METAL FLIPPER

CODE: 66IW | White
CODE: 66IB | Black
CODE: 66IWD | White, double
CODE: 66IBD | Black, double





ROPES & PEGS

GLOW-IN-THE-DARK SCREW-IN PEGS



NEW!

205MM GLOW-IN-THE-DARK HARD GROUND SCREW-IN PEG - LOOSE

CODE: HGSP-GLO

- Includes 1x glow-in-the-dark screw-in peg (20.5cm)
- For hard ground
- Designed to provide a secure anchor point for guy ropes, awning tie-down kits and gazebos
- Pegs glow in the dark for safety and easier visibility
- Uses: Gravel/stones, hard ground, grass, glow-in-the-dark for nighttime

Dimensions: 205mm (l) x 7.3mm dia / 13mm dia. hex head



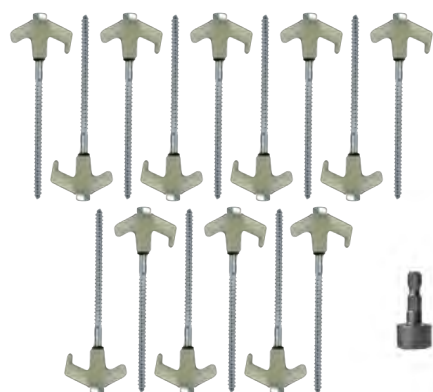
NEW!

300MM GLOW-IN-THE-DARK HARD GROUND SCREW-IN PEG - LOOSE

CODE: HGSP-GLO-L

- Includes 1x glow-in-the-dark screw-in peg (30cm)
- For hard ground
- Designed to provide a secure anchor point for guy ropes, awning tie-down kits and gazebos
- Pegs glow in the dark for safety and easier visibility
- Uses: Gravel/stones, hard ground, grass, glow-in-the-dark for nighttime

Dimensions: 300mm (l) x 7.3mm dia / 13mm dia. hex head



NEW!



GLOW-IN-THE-DARK SCREW-IN PEG KIT

CODE: HGSPK-16-GLO

- Pack includes 15x glow-in-the-dark screw in pegs, 1x 13mm hex drill adaptor, 1x hard storage case
 - For hard ground
 - Designed to provide a secure anchor point for guy ropes, awning tie-down kits and gazebos
 - Pegs glow in the dark for safety and easier visibility
 - Uses: Gravel/stones, hard ground, grass, glow-in-the-dark for nighttime
- Dimensions: 205mm (l) x 7.3mm dia. / 13mm dia. hex head

ACCESSORIES

NEW!



HARD GROUND SCREW-IN PEG DRILL ADAPTER 13MM

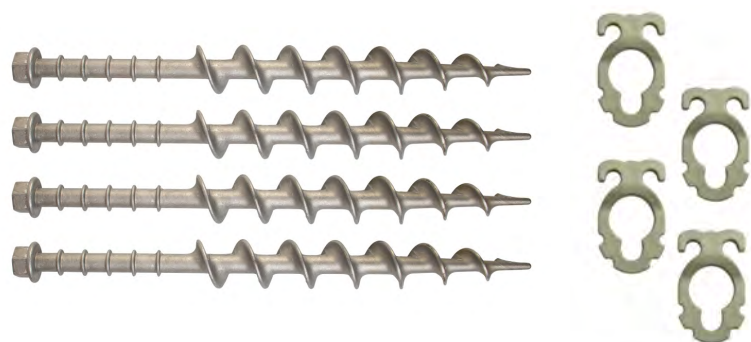
CODE: HGSP-DA

- 13mm drill adaptor to suit all Supex hard ground screw-in pegs

Dimensions: 13mm dia.



ALLOY SCREW-IN PEGS



LARGE ALLOY SCREW-IN PEGS - 4 PACK

CODE: ALPEG-L

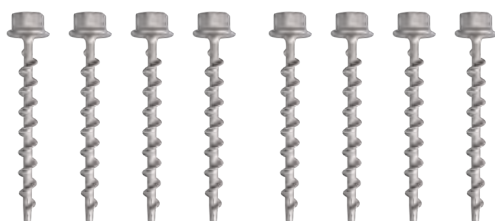
- Pack includes 4x large alloy screw-in pegs (30cm) and 4x large guy rope clips
 - Alloy screw-in pegs designed to provide a secure anchor point for guy ropes, gazebos and awning tie down kits
 - Designed to suit the 17mm drill adaptor (sold separately) that allows the screw to be quickly driven into the ground with ease
 - Designed to suit most environments; grass, gravel/stones, sand, soft to dense ground
- Dimensions: 300mm (l) x 17mm dia. head



MEDIUM ALLOY SCREW-IN PEGS - 4 PACK

CODE: ALPEG-M

- Pack includes 4x medium alloy screw-in pegs (20cm) and 4x medium guy rope clips
 - Alloy screw-in pegs designed to provide a secure anchor point for guy ropes, gazebos and awning tie down kits
 - Designed to suit the 17mm drill adaptor (sold separately) that allows the screw to be quickly driven into the ground with ease
 - Designed to suit most environments; grass, gravel/stones, sand, soft to dense ground
- Dimensions: 200mm (l) x 17mm dia. head



SMALL ALLOY SCREW-IN PEGS - 8 PACK

CODE: ALPEG-S

- Pack includes 8x small alloy screw-in pegs (12cm)
 - Alloy screw-in pegs designed to provide a secure anchor point for guy ropes, gazebos and awning tie down kits
 - Designed to suit the 17mm drill adaptor (sold separately) that allows the screw to be quickly driven into the ground with ease
 - Designed to suit most environments; grass, gravel/stones, sand, soft to dense ground
- Dimensions: 120mm (l) x 17mm dia. head



NEW!

LARGE ALLOY SCREW-IN PEG - LOOSE

ALPEG-L-B50

- Includes 1x large alloy screw-in peg (30cm) and 1x large guy rope clip
 - Alloy screw-in peg designed to provide a secure anchor point for guy ropes, gazebos and awning tie down kits
 - Designed to suit the 17mm drill adaptor (sold separately)
- Dimensions: 300mm (l) x 17mm dia. head



NEW!

MEDIUM ALLOY SCREW-IN PEG - LOOSE

ALPEG-M-B50

- Includes 1x medium alloy screw-in peg (20cm) and 1x medium guy rope clip
 - Alloy screw-in peg designed to provide a secure anchor point for guy ropes, gazebos and awning tie down kits
 - Designed to suit the 17mm drill adaptor (sold separately)
- Dimensions: 200mm (l) x 17mm dia. head



NEW!

SMALL ALLOY SCREW-IN PEG - LOOSE

ALPEG-S-B50

- Includes 1x small alloy screw-in peg (12cm)
 - Alloy screw-in peg designed to provide a secure anchor point for guy ropes, gazebos and awning tie down kits
 - Designed to suit the 17mm drill adaptor (sold separately)
- Dimensions: 120mm (l) x 17mm dia. head

ALLOY SCREW-IN PEGS



DELUXE ALLOY SCREW-IN PEG KIT

CODE: ALPEG-DK

- Pack includes 4x large alloy pegs (30cm), 4x medium alloy pegs (20cm), 4x small alloy pegs (12cm), 4x large guy rop clips, 4x medium guy rope clips, 1x 17mm drill adaptor and x 1x carry bag
- Alloy screw-in pegs designed to provide a secure anchor point for guy ropes, gazebos and awning tie down kits.
- Designed to suit most environments; grass, gravel/stones, sand, soft to dense ground

Dimensions vary for different peg sizes

ACCESSORIES



ALLOY SCREW-IN PEG DRILL ADAPTOR 17MM

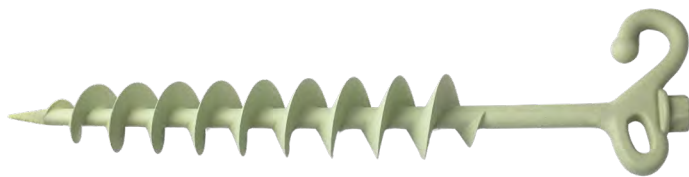
CODE: ALPG-DA

- 17mm drill adaptor to suit large, medium and small alloy screw-in pegs

Dimensions: 17mm dia.



SCREW-IN SAND PEGS



SCREW-IN SAND PEG - LOOSE

CODE: SPEG-B10

- Includes 1x screw-in sand peg (40cm)
- 19mm hex head socket
- Suitable for sand and soft soil
- Made from tough fibre-reinforced nylon
- Light green for easy visibility

Dimensions: 400mm (l)

NEW!

ACCESSORIES

NEW!



SCREW-IN SAND PEG DRILL ADAPTER 19MM

CODE: SPEG-DA

- 19mm drill adaptor to suit screw-in sand pegs

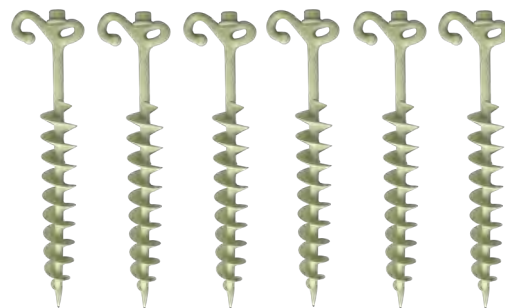
Dimensions: 19mm dia.

SCREW-IN SAND PEG KIT

CODE: SPEG

- Pack includes 6x large screw-in sand pegs (40cm), 1x storage bag and 1x 19mm drill adaptor
- Sand pegs suitable for soft soil
- Made from durable reinforced nylon

Dimensions: 400mm (l)



SCREW-IN MAT PEGS

SCREW-IN MAT PEGS

CODE: MTPEG

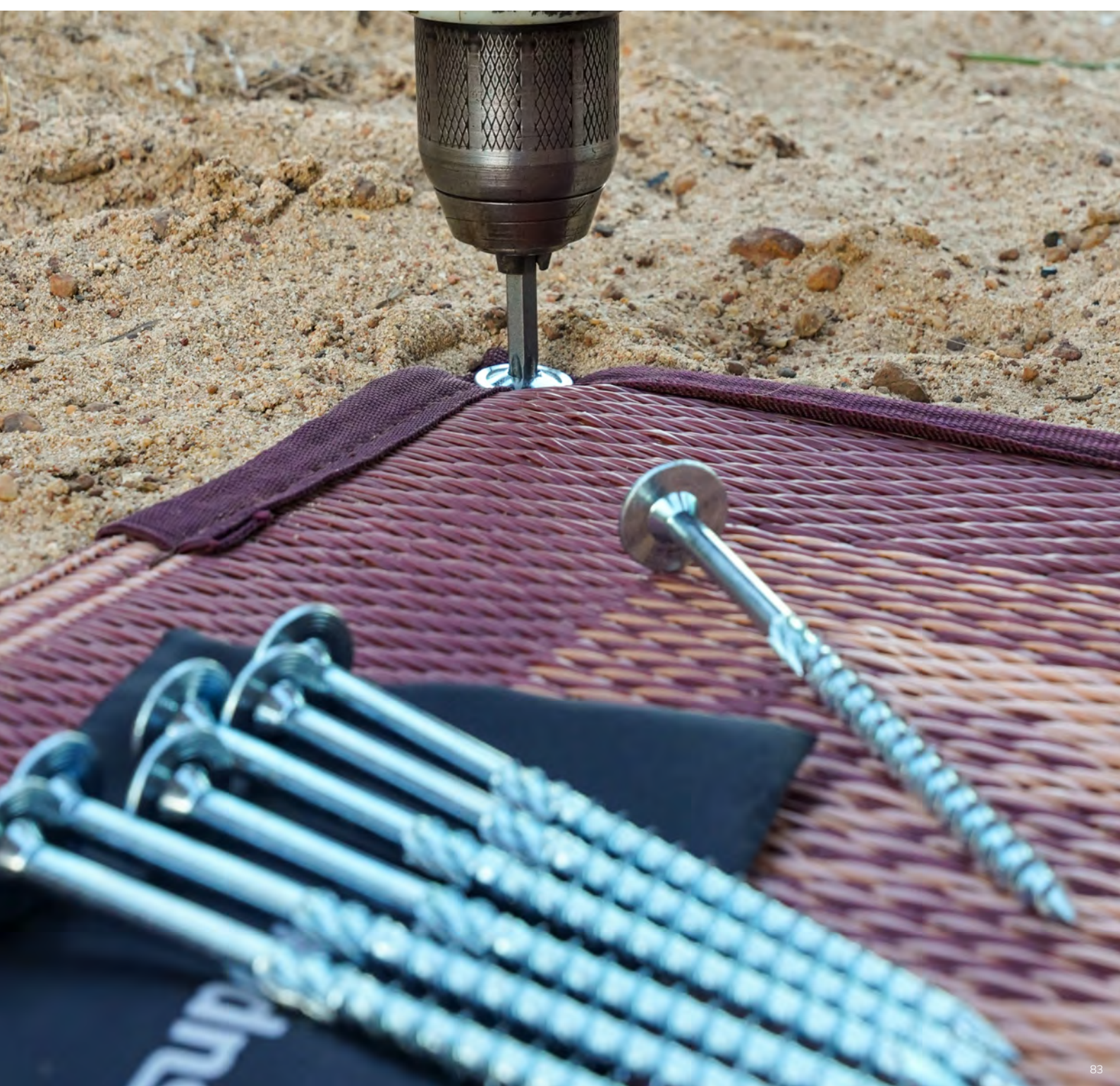
- Pack includes 8x mat pegs, 1x T40 drill bit, 1x storage bag
- Flush head design
- Zinc plated
- Designed to suit most environments; grass, gravel/stones, sand, soft to dense ground

Dimensions:

140mm (l) x 21mm dia. head



supex



TENT PEGS



STEEL TENT PEGS

CODE: 39AI | Bulk pack of 100 | 4mm dia. x 175mm (l)
 CODE: 39ALI | Bulk pack of 100 | 6.3mm dia. x 175mm (l)
 CODE: 39BI | Bulk pack of 100 | 6.3mm dia. x 225mm (l)
 CODE: 39JI | Bulk pack of 100 | 8mm dia. x 225mm (l)
 CODE: 39CI | Bulk pack of 100 | 8mm dia. x 300mm (l)
 CODE: 39DI | Bulk pack of 100 | 9.5mm dia. x 350mm (l)
 CODE: 39H | Bulk pack of 50 | 12mm dia. x 450mm (l)

- Zinc plated
- Individually barcoded



STEEL TENT PEGS, HANG SELL

CODE: 39AP | Bag of 10 | 4mm dia. x 175mm (l)
 CODE: 39ALP | Bag of 10 | 6.3mm dia. x 175mm (l)
 CODE: 39BP | Bag of 10 | 6.3mm dia. x 225mm (l)
 CODE: 39JP | Bag of 6 | 8mm dia. x 225mm (l)
 CODE: 39CP | Bag of 6 | 8mm dia. x 300mm (l)
 CODE: 39DP | Bag of 4 | 9.5mm dia. x 350mm (l)



PLASTIC SAND PEGS

CODE: 39E | Bulk pack of 100 | 220mm (l)
 CODE: 39F | Bulk pack of 100 | 300mm (l)
 CODE: 39G | Bulk pack of 50 | 500mm (l)

- Manufactured from Australian polypropylene



PLASTIC SAND PEGS, HANG SELL

CODE: 39EP | Hang sell bag of 6 | 220mm (l)
 CODE: 39FP | Hang sell bag of 4 | 300mm (l)
 CODE: 39GP | Hang sell bag of 3 | 500mm (l)

ACCESSORIES

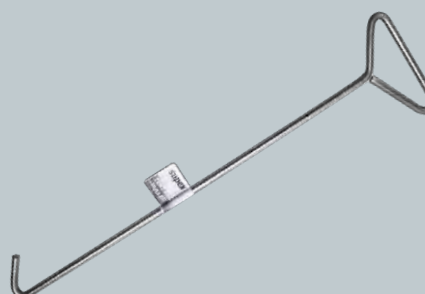


TENT PEG BAG

CODE: TPB

- Canvas bag for pegs & guy ropes

Dimensions:
 450mm (l) x 100mm (w) x 100mm (h)



TENT PEG PULLER

CODE: TPP1

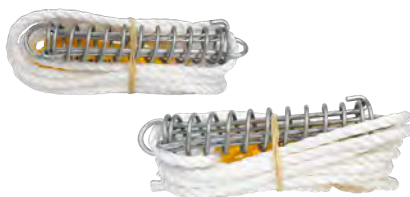
Dimensions: 800mm (l)

GUY ROPES



GUY ROPE, PLASTIC SLIDE

CODE: 38L | Single, 4mm rope
CODE: 38Q | Single, 6mm rope
CODE: 38QQ | Double, 6mm rope



GUY ROPE, POLYMER SLIDE

CODE: 32B | Single, spring, 6mm rope
CODE: 32BB | Double, spring, 6mm rope



GUY ROPE, TIMBER SLIDE

CODE: 38J | Single, 6mm rope
CODE: 38JJ | Double, 6mm rope
CODE: 38K | Single, spring, 6mm rope
CODE: 38KK | Double, spring, 6mm rope

supex

ROPE



POLYPROPYLENE ROPE

CODE: 34AC | 4mm coil | 250m
CODE: 34BC | 6mm coil | 250m
CODE: 34DC | 10mm coil | 250m
CODE: 34EC | 12mm coil | 250m



SILVER ROPE

CODE: 34HR | 4mm reel | 300m
CODE: 34FC | 6mm coil | 250m
CODE: 34FR | 6mm reel | 300m
CODE: 34GC | 8mm coil | 250m
CODE: 34GR | 8mm reel | 200m
CODE: 34IC | 10mm coil | 250m
CODE: 34IR | 10mm reel | 125m
CODE: 34JC | 12mm coil | 250m
CODE: 34JR | 12mm reel | 125m



UTILITY ROPE

CODE: UR4-RO
- Ideal for general-use applications
- Polypropylene
- Reflective orange colour

Dimensions:
4mm dia. x 20 metres



UTILITY ROPE

CODE: UR6-OG
- Heavy duty polypropylene
- Ideal for demanding securing tasks
- Abrasion resistant
- Olive green colour

Dimensions:
6mm dia. x 20 metres

ACCESSORIES



HOLD TIGHT TARP GRIPPER

CODE: SHO38I | Bulk
CODE: SHO38P | Hang Sell Pack of 4
CODE: SHO38C | Display carton, holds 15x packs of 4



BUNGEE CORD WITH TOGGLE BALL

CODE: ELO2 | Bulk
CODE: ELO2P | Hang Sell Pack of 2
- For tying down tarpaulins and/or privacy screens



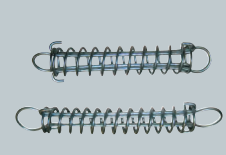
ELASTIC SHOCK CORD WITH HOOK

CODE: ESCHB | Bulk
CODE: ESCH | Hang Sell Pack of 2
- Tension absorber with plastic coated hook



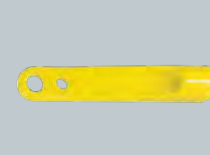
SPLICE CLIP

CODE: 39K | Bulk | Fits 6mm rope
CODE: 39KP | Hang Sell Pack of 4



TRACE SPRINGS

CODE: 38C | 150mm / 6"
CODE: 38D | 200mm / 8"



POLYMER SLIDE

CODE: 32C
- To suit 4mm, 6mm & 8mm rope



TIMBER SLIDE

CODE: 38G | Bulk
CODE: 38GP | Hang Sell Pack of 4
- 30mm (dia.) x 140mm (l)



COMBO SLIDE

CODE: 38B | Bulk
CODE: 38BP | Hang Sell Pack of 4
- To suit 4mm & 6mm rope



FASTENER HOOK

CODE: 66A | Bulk | 6mm
CODE: 66AP | Hang Sell Pack of 2
CODE: 66B | Bulk | 8mm
CODE: 66BP | Hang Sell Pack of 2



SHOCK CORD HOOK

CODE: KB2 | Bulk | Plastic
CODE: KB2P | Hang Sell Pack of 4
CODE: KB3 | Bulk | Metal
CODE: KB3P | Hang Sell Pack of 2



SHOCK CORD KNOB

CODE: KB1 | Bulk
CODE: KB1P | Hang Sell Pack of 4



SHOCK CORD LOOP

CODE: LP1 | Bulk | L:70mm, C:150mm
CODE: LP1P | Hang Sell Pack of 2
CODE: LP2 | Bulk | L:80mm, C:170mm
CODE: LP2P | Hang Sell Pack of 2
CODE: LP3 | Bulk | L:90mm, C:190mm
CODE: LP3P | Hang Sell Pack of 2
CODE: LP4 | Bulk | L:100mm, C:209mm
CODE: LP4P | Hang Sell Pack of 2



POLES & SPREADER BARS

TENT POLES

TENT POLE - T NUT - IMPORTED

CODE: 564CI | 19-22mm dia. x 0.9WT – max. 183cm (6') | Collapsed length: ~113cm
 CODE: 564DI | 19-22mm dia. x 0.9WT – max. 228cm (7'6") | Collapsed length: ~129cm
 CODE: 564EI | 19-22mm dia. x 0.9WT – max. 274cm (9') | Collapsed length: ~149cm



EXTENSION POLE - T NUT

CODE: 564C | 19-22mm dia. x 0.9WT – max. 183cm (6') | Collapsed length: ~110cm
 CODE: 564D | 19-22mm dia. x 0.9WT – max. 228cm (7'6") | Collapsed length: ~122cm
 CODE: 564B | 19-22mm dia. x 0.9WT – max. 243cm (8') | Collapsed length: ~133cm
 CODE: 564E | 19-22mm dia. x 0.9WT – max. 274cm (9') | Collapsed length: ~146cm
 CODE: 564F | 19-22mm dia. x 0.9WT – max. 305cm (10') | Collapsed length: ~169cm



EXTENSION SUPPORT POLE - T NUT - CLIP 1 END

CODE: 564DC | 19-22mm dia. x 0.9WT - max. 228cm (7'6") - clip end | Collapsed length: ~125cm
 CODE: 564BC | 19-22mm dia. x 0.9WT - max. 243cm (8') - clip end | Collapsed length: ~136cm
 CODE: 564EC | 19-22mm dia. x 0.9WT - max. 274cm (9') - clip end | Collapsed length: ~149cm
 CODE: 564FC | 19-22mm dia. x 0.9WT - max. 305cm (10') - clip end | Collapsed length: ~166cm



EXTENSION SUPPORT POLE - T NUT - SQUARE C CLIP

CODE: 564DSQC | 19-22mm dia. x 0.9WT – max. 228cm (7'6") - square clip end | Collapsed length: ~125cm
 CODE: 564BSQC | 19-22mm dia. x 0.9WT – max. 243cm (8') - square clip end | Collapsed length: ~136cm
 CODE: 564ESQC | 19-22mm dia. x 0.9WT – max. 274cm (9') - square clip end | Collapsed length: ~149cm
 CODE: 564FSQC | 19-22mm dia. x 0.9WT – max. 305cm (10') - square clip end | Collapsed length: ~166cm



THREE PIECE EXTENSION POLE

CODE: 564H | 19-22-25mm dia. x 0.9WT – max. 243cm (8') | Collapsed length: ~96cm
 CODE: 564I | 19-22-25mm dia. x 0.9WT – max. 305cm (10') | Collapsed length: ~116cm
 CODE: 564G | 19-22-25mm dia. x 0.9WT – max. 366cm (12') | Collapsed length: ~138cm



TENT POLES

EXTENSION - T NUT - THREADED SPIGOT

CODE: 564CT | 19-22mm dia. x 0.9WT - max. 183cm (6') - threaded spigot | Collapsed length: ~110cm
 CODE: 564DT | 19-22mm dia. x 0.9WT - max. 228cm (7'6") - threaded spigot | Collapsed length: ~126cm
 CODE: 564BT | 19-22mm dia. x 0.9WT - max. 243cm (8') - threaded spigot | Collapsed length: ~133cm
 CODE: 564ET | 19-22mm dia. x 0.9WT - max. 274cm (9') - threaded spigot | Collapsed length: ~146cm
 CODE: 564FT | 19-22mm dia. x 0.9WT - max. 305cm (10') - threaded spigot | Collapsed length: ~169cm



SWAG POLE

CODE: 564A | 16-19mm dia. x 0.9WT - max. 122cm (4') | Collapsed length: ~74cm



EXTENSION POLE - T NUT - HEAVY DUTY

CODE: 464D | 19-22mm dia. x 1.2WT - max. 228cm (7'6") | Collapsed length: ~126cm
 CODE: 464E | 19-22mm dia. x 1.2WT - max. 274cm (9') | Collapsed length: ~146cm
 CODE: 364D | 22-25mm dia. x 1.2WT - max. 228cm (7'6") | Collapsed length: ~126cm
 CODE: 364E | 22-25mm dia. x 1.2WT - max. 274cm (9') | Collapsed length: ~146cm



EXTENSION POLE - WELDED SPIGOT

CODE: 564CWS | 19-22mm dia. x 0.9WT - max. 183cm (6') - solid welded metal spigot | Collapsed length: ~113cm
 CODE: 564DWS | 19-22mm dia. x 0.9WT - max. 228cm (7'6") - solid welded metal spigot | Collapsed length: ~129cm
 CODE: 564BWS | 19-22mm dia. x 0.9WT - max. 243cm (8') - solid welded metal spigot | Collapsed length: ~136cm
 CODE: 564EWS | 19-22mm dia. x 0.9WT - max. 274cm (9') - solid welded metal spigot | Collapsed length: ~149cm
 CODE: 564FWS | 19-22mm dia. x 0.9WT - max. 305cm (10') - solid welded metal spigot | Collapsed length: ~172cm



ACCESSORIES

TENT POLE BAG

CODE: LPB

- Canvas bag to suit tent poles
 Dimensions: 1.65m (l) x 80mm (w) x 160mm (h)



SPREADER BARS

SPREADER BAR - T NUT - EYE BOTH ENDS

CODE: 564K | 19-22mm dia. x 0.9WT – max. 122cm (4') - 2 piece | Collapsed length: ~73cm
 CODE: 564L | 19-22mm dia. x 0.9WT – max. 152cm (5') - 2 piece | Collapsed length: ~88cm
 CODE: 564M | 19-22mm dia. x 0.9WT – max. 183cm (6') - 2 piece | Collapsed length: ~103cm
 CODE: 564N | 19-22mm dia. x 0.9WT – max. 213cm (7') - 2 piece | Collapsed length: ~126cm
 CODE: 564O | 19-22mm dia. x 0.9WT – max. 243cm (8') - 2 piece | Collapsed length: ~137cm
 CODE: 564P | 19-22mm dia. x 0.9WT – max. 274cm (9') - 2 piece | Collapsed length: ~150cm
 CODE: 564Q | 19-22mm dia. x 0.9WT – max. 305cm (10') - 2 piece | Collapsed length: ~167cm
 CODE: 564S | 22-25mm dia. x 1.2WT – max. 365cm (12') - 3 piece | Collapsed length: ~130cm
 CODE: 564X | 22-25mm dia. x 1.2WT – max. 427cm (14') - 3 piece | Collapsed length: ~152cm
 CODE: 564Y | 22-25mm dia. x 1.2WT – max. 488cm (16') - 4 piece | Collapsed length: ~133cm
 CODE: 564Z | 22-25mm dia. x 1.2WT – max. 548cm (18') - 4 piece | Collapsed length: ~148cm



supex



SPREADER BAR - T NUT - CLIP 1 END

CODE: 564KC | 19-22mm dia. x 0.9WT – max. 122cm (4') - 2 piece, clip end | Collapsed length: ~76cm
 CODE: 564LC | 19-22mm dia. x 0.9WT – max. 152cm (5') - 2 piece, clip end | Collapsed length: ~91cm
 CODE: 564MC | 19-22mm dia. x 0.9WT – max. 183cm (6') - 2 piece, clip end | Collapsed length: ~106cm
 CODE: 564NC | 19-22mm dia. x 0.9WT – max. 213cm (7') - 2 piece, clip end | Collapsed length: ~129cm
 CODE: 564OC | 19-22mm dia. x 0.9WT – max. 243cm (8') - 2 piece, clip end | Collapsed length: ~140cm
 CODE: 564PC | 19-22mm dia. x 0.9WT – max. 274cm (9') - 2 piece, clip end | Collapsed length: ~153cm



SPREADER BAR - T NUT - CLIP 2 ENDS

CODE: 564KC2 | 19-22mm dia. x 0.9WT – max. 122cm (4') - 2 piece, clip 2 ends | Collapsed length: ~74cm
 CODE: 564LC2 | 19-22mm dia. x 0.9WT – max. 152cm (5') - 2 piece, clip 2 ends | Collapsed length: ~89cm
 CODE: 564MC2 | 19-22mm dia. x 0.9WT – max. 183cm (6') - 2 piece, clip 2 ends | Collapsed length: ~104cm
 CODE: 564NC2 | 19-22mm dia. x 0.9WT – max. 213cm (7') - 2 piece, clip 2 ends | Collapsed length: ~127cm
 CODE: 564OC2 | 19-22mm dia. x 0.9WT – max. 243cm (8') - 2 piece, clip 2 ends | Collapsed length: ~138cm
 CODE: 564PC2 | 19-22mm dia. x 0.9WT – max. 274cm (9') - 2 piece, clip 2 ends | Collapsed length: ~151cm



HEAVY DUTY SQUARE SPREADER BAR

CODE: SR12 | 22-25mm – max. 365cm (12') - 3 piece | Collapsed length: ~133cm
 CODE: SR15 | 22-25mm – max. 457cm (15') - 3 piece | Collapsed length: ~163cm
 CODE: SR18 | 22-25mm – max. 548cm (18') - 4 piece | Collapsed length: ~155cm
 CODE: SR20 | 22-25mm – max. 608cm (20') - 4 piece | Collapsed length: ~163cm
 CODE: SR24 | 22-25mm – max. 730cm (24') - 5 piece | Collapsed length: ~163cm
 CODE: SR30 | 22-25mm – max. 912cm (30') - 6 piece | Collapsed length: ~163cm
 CODE: SR36 | 22-25mm – max. 1096cm (36') - 8 piece | Collapsed length: ~155cm



ROOF RAILS

ROOF RAIL - T NUT (INCLUDING BRACKET)

CODE: 564T | 19-22mm dia. x 0.9WT – max. 243cm (8') - eye end | Collapsed length: ~137cm
 CODE: 564V | 19-22mm dia. x 0.9WT – max. 274cm (9') - eye end | Collapsed length: ~150cm
 CODE: 564W | 19-22mm dia. x 0.9WT – max. 305cm (10') - eye end | Collapsed length: ~167cm



ROOF RAIL - T NUT (INCLUDING BRACKET) - CLIP END

CODE: 564TC | 19-22mm dia. x 0.9WT – max. 243cm (8') - clip end | Collapsed length: ~140cm
 CODE: 564VC | 19-22mm dia. x 0.9WT – max. 274cm (9') - clip end | Collapsed length: ~153cm
 CODE: 564WC | 19-22mm dia. x 0.9WT – max. 305cm (10') - clip end | Collapsed length: ~170cm



ROOF RAIL - T NUT (INCLUDING BRACKET) - SPIGOT END

CODE: 564TS | 19-22mm dia. x 0.9WT – max. 243cm (8') - spigot end | Collapsed length: ~143cm
 CODE: 564VS | 19-22mm dia. x 0.9WT – max. 274cm (9') - spigot end | Collapsed length: ~156cm
 CODE: 564WS | 19-22mm dia. x 0.9WT – max. 305cm (10') - spigot end | Collapsed length: ~173cm



ALUMINIUM TENT POLES

ALUMINIUM TENT POLE - TWIST LOCK

CODE: 264S | 22-25mm dia. x 1.2WT – max. 228cm (7'6") - mill finish | Collapsed length: ~131cm
 CODE: 264SW | 22-25mm dia. x 1.2WT – max. 228cm (7'6") - white finish | Collapsed length: ~131cm
 CODE: 264SB | 22-25mm dia. x 1.2WT – max. 228cm (7'6") - black finish | Collapsed length: ~131cm
 CODE: 264T | 22-25mm dia. x 1.2WT – max. 274cm (9') - mill finish | Collapsed length: ~155cm
 CODE: 264TW | 22-25mm dia. x 1.2WT – max. 274cm (9') - white finish | Collapsed length: ~155cm
 CODE: 264TB | 22-25mm dia. x 1.2WT – max. 274cm (9') - black finish | Collapsed length: ~155cm
 CODE: 264TG | 22-25mm dia. x 1.2WT – max. 274cm (9') - grey finish | Collapsed length: ~150cm



ALUMINIUM EXTENSION SUPPORT POLE - TWIST LOCK - CLIP END

CODE: 264SC | 22-25mm dia. x 1.2WT – max. 228cm (7'6") - clip end, mill finish | Collapsed length: ~129cm
 CODE: 264SWC | 22-25mm dia. x 1.2WT – max. 228cm (7'6") - clip end, white finish | Collapsed length: ~129cm
 CODE: 264SBC | 22-25mm dia. x 1.2WT – max. 228cm (7'6") - clip end, black finish | Collapsed length: ~129cm
 CODE: 264TC | 22-25mm dia. x 1.2WT – max. 274cm (9') - clip end, mill finish | Collapsed length: ~153cm
 CODE: 264TWC | 22-25mm dia. x 1.2WT – max. 274cm (9') - clip end, white finish | Collapsed length: ~153cm
 CODE: 264TBC | 22-25mm dia. x 1.2WT – max. 274cm (9') - clip end, black finish | Collapsed length: ~153cm
 CODE: 264TGC | 22-25mm dia. x 1.2WT – max. 274cm (9') - clip end, grey finish | Collapsed length: ~153cm



ALUMINIUM TENT POLES

ALUMINIUM TENT POLE - CLAMP ADJUSTMENT

CODE: 264SCL | 22-25mm dia. x 1.2WT – max. 228cm (7'6") - mill finish | Collapsed length: ~129cm
 CODE: 264SWCL | 22-25mm dia. x 1.2WT – max. 228cm (7'6") - white finish | Collapsed length: ~129cm
 CODE: 264SBCL | 22-25mm dia. x 1.2WT – max. 228cm (7'6") - black finish | Collapsed length: ~129cm
 CODE: 264TCL | 22-25mm dia. x 1.2WT – max. 274cm (9') - mill finish | Collapsed length: ~153cm
 CODE: 264TWCL | 22-25mm dia. x 1.2WT – max. 274cm (9') - white finish | Collapsed length: ~153cm
 CODE: 264TBCL | 22-25mm dia. x 1.2WT – max. 274cm (9') - black finish | Collapsed length: ~153cm
 CODE: 264TGCL | 22-25mm dia. x 1.2WT – max. 274cm (9') - grey finish | Collapsed length: ~153cm



supex

ALUMINIUM EXTENSION SUPPORT POLE - TWIST LOCK - SQUARE C CLIP

CODE: 264TSQ | 22-25mm dia. X 1.2WT - max. 274cm (9') - mill finish | Square C-clip | Collapsed length: ~154cm



ALUMINIUM SPREADER BARS

ALUMINIUM SPREADER BAR - CLAMP ADJUSTMENT

CODE: 264N | 22-25mm spreader bar x 1.2WT – max. 228cm (7'6") - mill finish | Collapsed length: ~130cm
 CODE: 264NW | 22-25mm spreader bar x 1.2WT – max. 228cm (7'6") - white finish | Collapsed length: ~130cm
 CODE: 264NB | 22-25mm spreader bar x 1.2WT – max. 228cm (7'6") - black finish | Collapsed length: ~130cm
 CODE: 264P | 22-25mm spreader bar x 1.2WT – max. 274cm (9') - mill finish | Collapsed length: ~154cm
 CODE: 264PB | 22-25mm spreader bar x 1.2WT – max. 274cm (9') - black finish | Collapsed length: ~154cm
 CODE: 264PG | 22-25mm spreader bar x 1.2WT – max. 274cm (9') - grey finish | Collapsed length: ~154cm
 CODE: 264PW | 22-25mm spreader bar x 1.2WT – max. 274cm (9') - white finish | Collapsed length: ~154cm



ALUMINIUM SPREADER BAR - CLAMP ADJUSTMENT - CLIP 2 ENDS

CODE: 264NC2 | 22-25mm spreader bar x 1.2WT – max. 228cm (7'6") - mill finish
 CODE: 264NWC2 | 22-25mm spreader bar x 1.2WT – max. 228cm (7'6") - white finish
 CODE: 264NBC2 | 22-25mm spreader bar x 1.2WT – max. 228cm (7'6") - black finish
 CODE: 264PC2 | 22-25mm spreader bar x 1.2WT – max. 274cm (9') - mill finish
 CODE: 264PWC2 | 22-25mm spreader bar x 1.2WT – max. 274cm (9') - white finish
 CODE: 264PBC2 | 22-25mm spreader bar x 1.2WT – max. 274cm (9') - black finish



ALUMINIUM SPREADER BAR BEND SPIGOT - TO MATCH JAYCO VANS

CODE: 264PJS | 22-25mm spreader bar x 1.2WT – max. 274cm (9') - mill finish | Collapsed length: ~156cm
 CODE: 264PJSBE | As above with bent spigot & bow end outer



ALUMINIUM SPREADER BAR - SLOTTED BOW END

CODE: 264NSBE | 22-25mm spreader bar x 1.2WT – max. 228cm (7'6") - mill finish
 CODE: 264PSBE | 22-25mm spreader bar x 1.2WT – max. 274cm (9') - mill finish



TENT POLE ACCESSORIES



SPIGOT

CODE: 38U | Fits 19mm tube O/D
CODE: 38W | Fits 22mm tube O/D
CODE: 38X | Fits 25mm tube O/D



THREADED SPIGOT

CODE: 38UT | Fits 19mm tube O/D
CODE: 38WT | Fits 22mm tube O/D
CODE: 38XT | Fits 25mm tube O/D



LONG SPIGOT, 92MM

CODE: 38UL | Fits 19mm tube O/D
CODE: 38WL | Fits 22mm tube O/D
CODE: 38XL | Fits 25mm tube O/D



SPIGOT, 6MM DIA. PIN

CODE: 38WS | Fits 22mm tube O/D



BENT SPIGOT

CODE: 38UB | Bulk | Fits 19mm tube O/D
CODE: 38UBP | Hang Sell Pack of 2
CODE: 38WB | Bulk | Fits 22mm tube O/D
CODE: 38WBP | Hang Sell Pack of 2
CODE: 38XB | Bulk | Fits 25mm tube O/D
CODE: 38XBP | Hang Sell Pack of 2



HOOK BENT SPIGOT

CODE: HBS | Fits 22mm tube O/D
CODE: HBS2 | Fits 25mm tube O/D



JAYCO BENT SPIGOT

CODE: JBS | Fits 22mm tube O/D suits Jayco roof rail bracket



S BEND SPIGOT

CODE: SBS1 | Fits 22mm tube O/D
CODE: SBS2 | Fits 25mm tube O/D



CAMLOK

CODE: CLK | Fits 22mm o/d tube

- Internal locking mechanism for aluminium pole



SPRING BUTTON CLIP

CODE: 38R | Bulk
CODE: 38RP | Hang Sell Pack of 2



SQUARE C CLIP

CODE: 38PSQ | Bulk | For square ridge poles
CODE: 38PSQP | Hang Sell Pack of 2



BIRD BEAK & PLATE

CODE: 38E | Fits 22mm/25mm tube O/D



PLASTIC SNAP CLIP

CODE: 38PS | Bulk | Fits/snaps 19mm tube O/D
CODE: 38PSP | Hang Sell Pack of 2
CODE: 38PM | Bulk | Fits/snaps 19/22mm tube O/D
CODE: 38PMP | Hang Sell Pack of 2
CODE: 38PL | Bulk | Fits/snaps 22mm tube O/D
CODE: 38PLP | Hang Sell Pack of 2
CODE: 38PO | Bulk | Fits/snaps 22/25mm tube O/D
CODE: 38POP | Hang Sell Pack of 2
CODE: 38PX | Bulk | Fits/snaps 25mm tube O/D
CODE: 38XP | Hang Sell Pack of 2



INTERNAL POLE CAP

CODE: 66Q | Bulk | 16mm O/D
CODE: 66QP | Hang Sell Pack of 4
CODE: 66R | Bulk | 19mm O/D
CODE: 66RP | Hang Sell Pack of 4
CODE: 66S | Bulk | 22mm O/D
CODE: 66SP | Hang Sell Pack of 4
CODE: 66T | Bulk | 25mm O/D
CODE: 66TP | Hang Sell Pack of 4



EXTERNAL POLE CAP

CODE: 66K | Bulk | 16mm O/D
CODE: 66KP | Hang Sell Pack of 4
CODE: 66L | Bulk | 19mm O/D
CODE: 66LP | Hang Sell Pack of 4
CODE: 66M | Bulk | 22mm O/D
CODE: 66MP | Hang Sell Pack of 4
CODE: 66P | Bulk | 25mm O/D
CODE: 66PP | Hang Sell Pack of 4

TENT POLE ACCESSORIES

HANG SELL
AVAILABLE

BOW MOUNT

CODE: 39T | Bulk | Base size 60mm x 20mm
CODE: 39TP | Hang Sell Pack of 2

BOW MOUNT LARGE

CODE: 39TL | Base size 70mm x 30mm

BOW KNUCKLE

CODE: BK19 | Fits 19mm tube O/D
CODE: BK22 | Fits 22mm tube O/D
CODE: BK25 | Fits 25mm tube O/D

HANG SELL
AVAILABLEHANG SELL
AVAILABLE

BOW ENDS

CODE: BE1 | Bulk | Fits 19mm tube O/D
CODE: BE1P | Hang Sell Pack of 2
CODE: BE2 | Bulk | Fits 22mm tube O/D
CODE: BE2P | Hang Sell Pack of 2
CODE: BE3 | Bulk | Fits 25mm tube O/D
CODE: BE3P | Hang Sell Pack of 2

SLOTTED BOW END

CODE: BE2S | Fits 22mm tube O/D
CODE: BE3S | Fits 25mm tube O/D

SQUARE BOW END

CODE: SBE22 | Bulk | Fits 22mm square tube O/D
CODE: SBE22P | Hang Sell Pack of 2
CODE: SBE25 | Bulk | Fits 25mm square tube O/D
CODE: SBE25P | Hang Sell Pack of 2



SPIGOT DOME

CODE: 38V

SPIGOT DOME & SPRING

CODE: 38VSP

WINDOW BRACKET

CODE: 38N | Fits 25mm C-clip

HANG SELL
AVAILABLEHANG SELL
AVAILABLE

T NUT & THUMBSCREW

CODE: 38Z | Bulk | Suits all steel poles
CODE: 38ZP | Hang Sell Pack of 2

QUICK ACTION CLAMP

CODE: PCALC | Fits 22-25mm O/D tube
CODE: PCALC22 | Fits 19-22mm O/D tube

PLASTIC POLE GROUND PLATE

CODE: 38P | BULK
CODE: 38PP | Hang Sell Pack of 2



INDEX

A

ACTION CHAIR, KING SIZE	52
ACUTE CURVED ROOF RAFTER	21
ADJUSTABLE CARAVAN STEP, HEAVY DUTY	10
ADJUSTABLE LEGS	46
AEROFLOW TAP	73
AIR BEDS	51
AIR PUMP, RECHARGEABLE	69
AIRERS	19
ALLOY SCREW-IN PEGS	80
ALUMINIUM FOOT	47
ALUMINIUM SPREADER BARS	91
ALUMINIUM SQUARE POLE CARRIER	17
ALUMINIUM TENT POLES	90-91
ANNEXE MATTING	18
ANODES	35
ANTI-FLAP KITS (SECURA BAR KITS)	22
AWNING ACCESSORIES	24
AWNING ADAPTOR BRACKET	23
AWNING BRACKET	24
AWNING LIGHTS, DUAL COLOUR	41
AWNING PORCH EXTENSION KIT	29
AWNING PULL STRAP REPLACEMENT	26
AWNING ROPE KITS	25
AWNING TENSIONER	24
AWNING TIE DOWNS	26

B

BASKET, SMALL / LARGE, COLLAPSIBLE	16
BATTERY BOX	46
BILLY WITH LID, ZEBRA	61
BIN WITH LID, COLLAPSIBLE	16
BIO PAK TOILET CHEMICAL SACHETS	31
BIRD BEAK & PLATE	92
BLACK DRINKING WATER HOSE	8
BLACK FRIDGE BARS, CARAVAN	12
BLACK LONG WALL PRIVACY SCREEN	27
BLACK METAL CARAVAN STEP	10
BLUE SAUCEPAN, COLLAPSIBLE	15
BONUS DROP WALL PRIVACY SCREEN	27
BOSTON VALVE	51
BOW ENDS	93
BOW MOUNT	93
BOW SHACKLES	47
BOWL, COLLAPSIBLE	14
BOWL, ZEBRA	58
BRACKETS, ROOF RAIL	23
BRASS 4 PIECE SET FOR 12MM HOSE	9
BRASS LOOK READING LIGHT, 45MM	37
BUCKET, COLLAPSIBLE	16
BUNG, UNIVERSAL	73
BUNGEE CORD	85

C

CAM FITTINGS	9
CAMLOK	92
CAMP BLUE TOILET CHEMICAL LIQUID	32
CAMP FLUSH TOILET CHEMICAL LIQUID	32
CAMP GREEN TOILET CHEMICAL LIQUID	32
CAMP QUAD CHAIR	52
CAMP SOFT TOILET PAPER	33
CAMPER CLEANER, STIMEX	75
CAMPING CHAIRS	52
CAMPING SET, ZEBRA	59
CAMPING TOOLS	72
CANVAS ACCESSORIES	77
CANVAS SHOWER	72
CAP (TO SUIT WATER CUBE)	73
CARAVAN DIGITAL WEIGHT SCALES	12
CARAVAN FRIDGE BARS	12
CARAVAN HOSE	8
CARAVAN STEPS	10
CARAVAN STICKERS	12
CASSETTE TANK CLEANER	33
CAST IRON	57
CEILING LIGHTING	40
CENTRE SUPPORT CRADLES	24
CHAIRETTE	53
CLOTHES AIRERS	19
COB STRIP LIGHTING	42
COLLANDER, COLLAPSIBLE	14
COLLAPSIBLE BOWL	14

C

COLLAPSIBLE CONTAINER	73
COLLAPSIBLE DOUBLE HANDLE COLLANDER	14
COLLAPSIBLE FURNITURE	55
COLLAPSIBLE TRIPOD, SMALL	57
COMBO SLIDE	85
CONTAINERS, ROUND/RECTANGLE	14
CONTAINERS, WATER	73
CURVED ROOF RAFTER END	23
CURVED ROOF RAFTERS	21

D

D RINGS	77
DELUXE ALLOY SCREW-IN PEG KIT	81
DELUXE INTERIOR READING LIGHTS	38
DELUXE STARTER PACK	7
DIRECTORS CHAIR, ALUMINIUM	52
DISH DRAINER, COLLAPSIBLE	14
DISH, COLLAPSIBLE	16
DISSOLVING TOILET PAPER	33
DO NOT OVERTAKE VEHICLE STICKER	12
DOUBLE HANDLE COLANDER, COLLAPSIBLE	14
DOUBLE JAFFLE IRON	57
DRAINER, COLLAPSIBLE	14
DRINKING WATER HOSE	8
DRINKING WATER HOSE STORAGE BAG	9
DRUM SPANNER	73
DRYING RACK, WALL MOUNTED	19
D-SHACKLES	47
DUAL AXLE WHEEL CHOCK	5
DUAL AXLE WHEEL LEVELLING RAMP SET	5
DUAL COLOUR AWNING LIGHT - NO SWITCH	41
DUAL COLOUR AWNING LIGHT - SWITCH	41
DUTCH OVEN LID LIFTER	57

E

EASY HANG CLOTHESLINE	19
ELASTIC SHOCK CORD	85
ELECTRICAL LEAD STORAGE BAG	9
ELECTRICAL LEADS	35
ELEMONATE WALEX SACHETS	31
END WALL PRIVACY SCREEN	28
ENSUITE ACCESSORIES	33
EXTERIOR LIGHTING	41
EXTRA FLEXIBLE SULLAGE HOSE	8
EXTRA LONG READING LIGHT	38

F

FAN, RECHARGEABLE	69
FANS, INTERIOR, 12V/24V	36
FASTNER HOOK	85
FAUX TIMBER READING LIGHT	38
FIAMMA AWNING PRIVACY SCREENS	29
FITTINGS, HOSE	9
FIXED CARAVAN STEP, PLASTIC	10
FIXED SHOVEL	72
FLY REPELLENT FAN, RECHARGEABLE	70
FOAM PVC CARPET	18
FOLDING CLOTHES AIRER	19
FOLDING SHOVEL	72
FOOD CARRIER, ZEBRA	60
FOOT BELLOWES	65
FOUR SLICE TOASTER	57
FRIDGE BARS	12
FRONT OPENING JERRY CAN HOLDER	48
FRYPAN, CAST IRON	57
FRYPAN, COLLAPSIBLE	15
FUEL CONTAINERS	73

G

GAS BOTTLE HOLDER	49
GAZEBO, 3M X 3M	63
GLOW-IN-THE-DARK SCREW-IN PEGS	79
GREY LONG WALL PRIVACY SCREEN	27

G

GREY SAUCEPAN, COLLAPSIBLE	15
GROUND MATTING	18
GUY ROPES	85

H

HAMMERTONE FINISH JERRY CAN HOLDER	48
HAND PUMP	11
HANDLE, FOR SECURA BAR	23
HARD ARM CHAIR, RECLINING	52
HATCHET	72
HEAVY DUTY ADJUSTABLE CARAVAN STEP	10
HEX HEAD HANDLE	47
HOLD TIGHT TARP GRIPPER	85
HOOK & LOOP TAPE	76
HOOP LEG STOOLS	53
HOSE	8
HOSE ACCESSORIES	9
HOSE STORAGE BAG	9

I

INFLATABLE BOATS	64
INTERIOR FANS, 12V/24V	36
INTERIOR READING LIGHTS	37

J

JACK PAD	47
JACK PAD STACKER	47
JAFFLE IRON, DOUBLE	57
JERRY CAN HOLDERS	48
JERRY CANS	73
JOCKEY WHEEL BLOCK	5
JOCKEY WHEEL HOLDER	47
JOCKEY WHEELS	45

K

KETTLE, COLLAPSIBLE	15
KETTLE, WHISTLING, ZEBRA	61
KING SIZE ACTION CHAIR	52

L

LADDER LOCK	77
LADDER STRAP, AWNING	24
LARGE BASKET, COLLAPSIBLE	16
LARGE TRIPOD	57
LEAK REPAIR, STIMEX	75
LED STRIP LIGHT, RIGID	42
LEVEL BLOCK SET	5
LEVELLING RAMP SET, DUAL	5
LEVELLING RAMP SET, SINGLE	5
LIGHTWEIGHT TABLE	54
LONG WALL PRIVACY SCREENS	27
LOOP HANDLE POTS, ZEBRA	59
LUNCH BOX, ZEBRA	60

M

MAGAZINE HOLDER	11
MAGNESIUM ANODE	35
MALLET	72
MAT PEGS, SCREW-IN	83
MESH GROUND MATTING	18
METAL CARAVAN STEP	10
MIGHTY HIKER CHAIR	55
MINI SPLITTER	72
MOSQUITO ZAPPER, UV	70
MOUNTING BRACKETS	17
MUG WITH LID, ZEBRA	58
MUG, ZEBRA	58

INDEX

N

NOMAD TABLE
NUT & TAIL

55
9

O

ON/OFF SNAP TAP
OUTDOOR SPRAY, STIMEX
OYSTER LIGHT

73
75
43

P

P SERIES HANDLE
PERSONAL TABLE
PIN FOR REPLACEMENT FOOT
PLASTIC BASIN
PLASTIC FIXED CARAVAN STEP
PLASTIC FOOT
PLASTIC POLE GROUND PLATE
PLATE, ZEBRA
POLE CAPS
POLE CARRIER
POLE GROUND PLATE, PLASTIC
POLY WEBBING
POLYMER SLIDE
POLYPROPYLENE ROPE
POP TOP END WALL PRIVACY SCREEN
POP TOP SUPPORT BARS
PORCH EXTENSION KIT
PORTA PAK TOILET CHEMICAL SACHETS
POWER ADAPTOR, 10A TO 15A
PRIVACY SCREENS, LONG
PULL STRAP REPLACEMENT FOR AWNINGS
PUMPS
PUSH/PULL PUMP
PVC FOAM CARPET

47
54
47
73
10
47
93
58
92
17
93
76
85
85
28
24
29
31
35
27
26
65
65
18

Q

QUICK ACTION CLAMP
QUICK RELEASE ADJUSTABLE LEG

93
46

R

READING LIGHTS, 80MM
READING LIGHTS, INTERIOR
RECHARGEABLE AIR PUMP
RECHARGEABLE FAN
RECHARGEABLE FLY REPELLENT FAN
RECHARGEABLE LIGHT
RECHARGEABLE UV MOSQUITO ZAPPER
RECHARGEABLE VERSA LIGHTS
RECHARGEABLE VIBE LIGHT
RECLINING HARD ARM CHAIR
RECTANGLE CONTAINERS, 4PK
RECTANGLE DISH, COLLAPSIBLE
RECTANGULAR LUNCH BOX, ZEBRA
REDUCING BUSH
REDUCING NIPPLE
REPLACEMENT PULL STRAP FOR AWNINGS
RIGID LED STRIP LIGHT
ROCKER SWITCH, 3-POSITION
ROOF RAIL BRACKETS
ROOF RAILS
ROPE
ROPE CLIPS, AWNING
ROPE KITS, AWNING
ROUND CONTAINERS, 4PK
ROUND LUNCHBOX, ZEBRA
RUBBER LADDER STRAP
RV LEVEL BLOCK SET

39
37
69
69
70
68
70
67
68
52
14
16
60
9
9
26
42
42
23
90
85
24
25
14
60
24
5

S

SAFETY STRAPS, AWNING
SAIL TRACK LOOPS
SAND PEGS, SCREW-IN

24
26
82

S

SAUCEPAN, CAST IRON
SAUCEPAN, COLLAPSIBLE
SCALES, CARAVAN DIGITAL WEIGHT
SACHETS, TOILET CHEMICAL
SCREW-IN MAT PEGS
SCREW-IN PEGS, ALLOY
SCREW-IN PEGS, GLOW-IN-THE-DARK
SCREW-IN SAND PEGS
SEAM SEALER, STIMEX
SEAT BELT WEBBING
SECURA BAR EXTENSION
SECURA BAR KITS (ANTI-FLAP KITS)
SEEKER TABLE
SELF ADHESIVE HOOK & LOOP TAPE
SET OF 3 HOSE & LEAD STORAGE BAGS
SEW ON HOOK & LOOP TAPE
SHACKLES
SHOCK CORD KNOB
SHOCK CORD LOOPS
SHOVELS
SHOWERS
SIDE RELEASE BUCKLES
SILVER ROPE
SINGLE AXLE WHEEL LEVELLING RAMP SET
SINGLE SLICE TOASTER
SINGLE WHEEL CHOCK
SINK HAND PUMP
SINK PLUG
SLIGHT CURVED ROOF RAFTER
SMALL BASKET, COLLAPSIBLE
SMALL COLLAPSIBLE TRIPOD
SMALL FOLD IN HALF TABLE
SMALL HOOP LEG STOOL
SPIGOT DOME
SPIGOT END, FOR CURVED ROOF RAFTER
SPIGOTS
SPLICE CLIP
SPLITTER, MINI
SPREADER BARS
SPRING BUTTON CLIP
SQUARE FRYPAN
SQUARE POLE CARRIER, ALUMINIUM
STARTER PACKS
STEEL TENT PEGS
STEPS, CARAVAN
STIMEX TREATMENTS
STOCK POT, ZEBRA
STOOLS
STORAGE BAG FOR AFK & CRR
STORAGE BAGS, HOSE & LEAD
STRING LIGHTS (VIBE LIGHT)
STRIP LIGHT, LED
STRIP LIGHTING, COB
SULLAGE HOSE
SULLAGE HOSE STORAGE BAG
SWIVEL JOCKEY WHEELS

57
15
12
31
83
80
79
82
75
76
23
22
55
76
9
76
47
85
85
72
72
77
85
5
57
5
11
11
21
16
57
54
53
93
23
92
85
72
89
92
57
17
6-7
84
10
75
61
53
23
9
68
42
42
8
9
45

T

T NUT & THUMBSCREW
TABLES
TAPS
TEAR AID
TENT CLEANER, STIMEX
TENT PEG BAG
TENT PEG PULLER
TENT PEGS, STEEL
TENT POLE ACCESSORIES
TENT POLES
TIE DOWN KIT
TIE DOWN STRAP KIT
TIERED FOOD CARRIER, ZEBRA
TIERED LUNCH BOX, ZEBRA
TIMBER SLIDE
T-LEVEL
TOASTERS
TOILET CHEMICAL LIQUID
TOILET CHEMICAL SACHETS
TOILET CLEANING ACCESSORIES
TOILET PAPER
TOW BALL WEIGHT SCALES
TRACE SPRINGS
TRASH BIN WITH LID, COLLAPSIBLE
TRI-COLOUR CEILING LIGHT
TRIGLIDES

93
54
73
75
75
84
84
84
92
87-88
29
26
60
60
85
11
57
32
31
33
33
12
85
16
40
77

T

TRI-LEG STOOL
TRIPODS
T-TOGGLES
TUB/SINK COLLAPSIBLE
TURNING KNOB
TWIN COUPLING LOCK
TWO STAGE ALUMINIUM CARAVAN STEP

53
57
77
16
23
47
10

U

UHF CHANNEL STICKER
ULTRA HIKER CHAIR
ULTRA SLIM LIGHT
UNIVERSAL BUNG
UNIVERSAL ON/OFF TAP
UTILITY ROPE
UTILITY TABLE
UV MOSQUITO ZAPPER, RECHARGEABLE

12
55
43
73
73
85
54
70

V

VELOUR AIR BEDS
VERSA LIGHTS
VERSATILE SAIL TRACK LOOPS
VIBE LIGHT
VOYAGER CHAIR

51
67
26
68
55

W

WALEX TOILET CHEMICAL SACHETS
WALL MOUNTED DRYING RACK
WANDERLITE FURNITURE
WASH TUB / SINK, COLLAPSIBLE
WATER CONTAINERS
WATER CUBES
WATER FILTER
WATER HOSE
WATER JERRY CAN
WATER TANK CLEANER
WATER TANK FILLER
WATERPROOFER, STIMEX
WEBBING
WEIGHT SCALES, CARAVAN
WEIGHT SCALES, TOW BALL
WHEEL CHOCK
WHEEL CHOCK, DUAL AXLE
WHEEL HOLDERS
WHEEL LEVELLING RAMP SET, DUAL
WHEEL LEVELLING RAMP SET, SINGLE
WHEEL RAMPS & CHOCKS
WHISTLING KETTLE, COLLAPSIBLE
WHISTLING KETTLE, ZEBRA
WINDOW BRACKET

31
19
55
16
73
73
11
8
73
33
9
75
76
12
12
5
5
47
5
5
5
15
61
93

Z

ZEBRA STAINLESS STEELWARE

58-61

#

12V AIR PUMP
12V AWNING ROPE KIT
12V/24V INTERIOR FAN
15A TO 10A CARAVAN POWER ADAPTOR
240V AIR PUMP
3 PIECE CAMPING SET, ZEBRA
3 QUART SAUCEPAN
3M X 3M GAZEBO
3-POSITION ROCKER SWITCH
45MM READING LIGHT
60MM READING LIGHTS
76MM CARAVAN CEILING LIGHT
80MM CARAVAN READING LIGHTS

65
25
36
35
65
59
57
63
42
37
37
40
39

supex

SUPEX.COM.AU

supex
A LIFETIME
OF ADVENTURE

(02) 4823 6001
HELLO@SUPEX.COM.AU
GOULBURN, NSW